

[Compositeur anonyme]

Gigue

La majeur

Manuscrit d'Haslemere

Haslemere, Carl Dolmetsch Library

GB-HAdolmetsch ms II.B.2

Page 24



Gigue

Musical score for 'Gigue' in 6/8 time. The score consists of six systems of music, each with a treble clef and a 6/8 time signature. The notation includes various rhythmic values (minims, crotchets, quavers), ornaments (flourishes above notes), and fingerings (numbers 1-5). The piece concludes with a repeat sign and a decorative flourish.

System 1 (Measures 1-3): *e* *de* | *r era e a er* | *a a a a* | *e a r a e*

System 2 (Measures 4-7): *e de* | *r era e a er* | *a a a a* | *era ar a a* | *e e*

System 3 (Measures 8-12): *r br* | *r era a a e de* | *r r a a* | *e r a a* | *r r r*

System 4 (Measures 13-17): *r br r br* | *r br r br* | *r br r br* | *r r r r* | *r e r e r e r e r e*

System 5 (Measures 18-22): *r a e e ar* | *a e r e r a a r* | *a r* | *era* | *era a era* | *era a era*

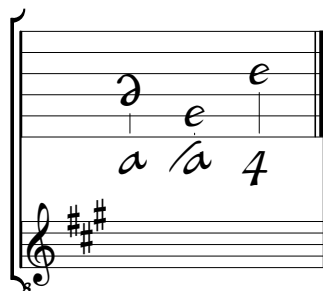
System 6 (Measures 23-24): *e r a a r a* | *e e*

A decorative flourish is located at the bottom right of the page.

1. Tablature originale : dans cette mesure, l'ornement et le quart de soupir sont absents.

Tonalité et accord du luth : La majeur

Scordature par octave



Accord des 11 chœurs du luth

Musical notation for the 'Accord des 11 chœurs du luth' chord. It consists of two staves. The upper staff has notes 'a' on the first space, 'a' on the first space, 'a' on the first space, 'a' on the first space, 'a' on the first space, 'a' on the first space, 'a' on the first space, 'a' on the first space, 'a' on the first space, 'a' on the first space, and '4' on the first space. The lower staff has notes 'a' on the first space, 'a' on the first space, 'a' on the first space, 'a' on the first space, 'a' on the first space, 'a' on the first space, 'a' on the first space, 'a' on the first space, 'a' on the first space, 'a' on the first space, and '4' on the first space. A treble clef and a key signature of two sharps (F# and C#) are shown at the beginning of the lower staff.