

Adam Franz Ginter

(1661 - juillet 1706)

Chaconne

La majeur

Manuscrit d'Haslemere

Haslemere, Carl Dolmetsch Library

GB-HAdolmetsch ms II.B.2

Page 30



Chaconne

P[ar] Ginter

Handwritten musical score for Chaconne by Adam Franz Ginter. The score is written on a six-line staff with rhythmic notation above and tablature below. It consists of six systems of music, each starting with a measure number (6, 12, 18, 23, 28). The notation includes various rhythmic values (quarter, eighth, sixteenth notes), rests, and accidentals. The tablature uses letters 'a' and 'e' to denote fret positions. There are repeat signs and a first ending marked '(1*)' at measure 11.

1. Tablature originale : cette variation est incomplète et a été reconstituée.

34

a a e e r a a a e e a e r a r e e e
 a a a a a a a a a a a a a a 4

39

r a a a e e e e r e a f a r e a r e e r a r a
 a a a a a a a a a a a a a a 4 a a

(1*)

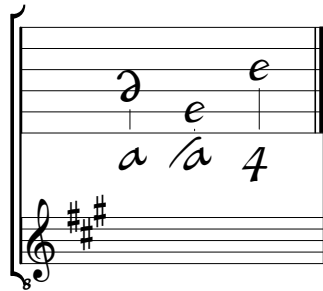
44

e e e e a a r a e e f a a a e
 a a a a a a a a a a a a a

1. Accord absent de la tablature originale.

Tonalité et accord du luth : La majeur

Scordature par octave



Accord des 12 chœurs du luth

The image shows a lute tablature and a treble/bass clef staff. The tablature consists of two staves. The top staff has a sequence of notes: 'a' on the 1st line, 'a' on the 2nd line, 'a' on the 3rd line, 'a' on the 4th line, 'a' on the 5th line, 'a' on the 6th line, 'a' on the 7th line, 'a' on the 8th line, 'a' on the 9th line, 'a' on the 10th line, 'a' on the 11th line, and 'a' on the 12th line. The bottom staff has a sequence of notes: 'a' on the 1st line, 'a' on the 2nd line, 'a' on the 3rd line, 'a' on the 4th line, 'a' on the 5th line, 'a' on the 6th line, 'a' on the 7th line, 'a' on the 8th line, 'a' on the 9th line, 'a' on the 10th line, 'a' on the 11th line, and 'a' on the 12th line. The treble clef staff below has a key signature of two sharps (F# and C#) and a common time signature (C). The bass clef staff below has a key signature of two sharps (F# and C#) and a common time signature (C).