

***Silvius Leopold Weiss***

(1687 - 16 oct. 1750)

# Presto

WeissSW88.7

Do majeur

**Manuscrits Harrach, Schloß Rohrau**

*Rohrau, Graf Harrach'sche Familiensammlung*

A-RO Lauten-Ms. 2

*Lauten Musik von unbekanntem Componisten*

*Pages 65 et 66*

*Voir dans le manuscrit de Varsovie PL-Wu 2003, folio 8v, l'Allegro de la Suite 2. [PLWu2003\_2]*

*Voir dans le manuscrit de Varsovie PL-Wu 2005, page 14, l'Allegro de la Suite 2. [PLWu2005\_2]*



# Presto

Musical score for 'Presto' by Silvius Leopold Weiss. The score is in 3/4 time and consists of 20 measures. The notation includes various rhythmic patterns, fingerings (indicated by numbers 1-5), and articulations (accents, slurs, and breath marks). The piece is written for a single melodic line.

Measure 1:  $\text{ar r ar h}$  (fingerings:  $\text{r m r m r}$ )  
 Measure 2:  $\text{g h g f h g h f}$  (fingerings:  $\text{r m r m}$ )  
 Measure 3:  $\text{h f a r a a r a}$  (fingerings:  $\text{r m r m}$ )

Measure 4:  $\text{r a r a a r a r a}$  (fingerings:  $\text{m r m}$ )  
 Measure 5:  $\text{a r a r a r a r r r}$  (fingerings:  $\text{m}$ )  
 Measure 6:  $\text{e e e}$  (fingerings:  $\text{m}$ )

Measure 7:  $\text{r a r r a r r}$  (fingerings:  $\text{m}$ )  
 Measure 8:  $\text{e e e e e}$  (fingerings:  $\text{m}$ )  
 Measure 9:  $\text{r b r r b r r b r}$  (fingerings:  $\text{m}$ )

Measure 10:  $\text{e r e e r e e r e}$  (fingerings:  $\text{m}$ )  
 Measure 11:  $\text{r b r a r a r a r}$  (fingerings:  $\text{m}$ )  
 Measure 12:  $\text{e a e e a e e a e}$  (fingerings:  $\text{m}$ )

Measure 13:  $\text{f a f g f a f g f a f g}$  (fingerings:  $\text{m}$ )  
 Measure 14:  $\text{h a h h a h h a h h}$  (fingerings:  $\text{m}$ )  
 Measure 15:  $\text{r r r a r r r a r r r a}$  (fingerings:  $\text{m}$ )

Measure 16:  $\text{r a r a a r a r a r}$  (fingerings:  $\text{m}$ )  
 Measure 17:  $\text{a a a r}$  (fingerings:  $\text{r}$ )  
 Measure 18:  $\text{b r r b r a r a}$  (fingerings:  $\text{m}$ )  
 Measure 19:  $\text{r b r a r b r r a a}$  (fingerings:  $\text{m}$ )

Measure 20:  $\text{r r a r r a r}$  (fingerings:  $\text{r m r m r}$ )  
 Measure 21:  $\text{e a r e e r e g h}$  (fingerings:  $\text{r m r m r m}$ )  
 Measure 22:  $\text{g f e g g h k g}$  (fingerings:  $\text{r m r m r}$ )

24

*h g h g h g h f | eae eae eae e | r r r r r r r r e*  
*//a a 4 //a 4 5*

27

*r r r r r r r r | e r e r e r e r r r e r | b r b b b r b b b r b b*  
*4 5 6 a a a*

30

*a r a a a r a a a r a a | e e e r e e e r e e e r | e e e b e e e b e e e b*  
*b b b a a a //b //b //b*

33

*r r r a r r r a r r r a | e r e r e r e r e r e r | a a a a a a a a*  
*/a /a /a //a //a //a 5 5 5*

36

*r r r a r r r a | e r a r a | r r a r a | r a a a | a*  
*4 //a //a /a a a a/a a 5 4 /a a*

40

*e r e r e r e r e r | e r e r e r e r e r | e r e r e r e r e r*  
*4 a a a /a a //a*

43

*g r e r a a | a | r r e | a r a a | a r r*  
*//a/a/a a a r a) a 4 /a a 4*

47

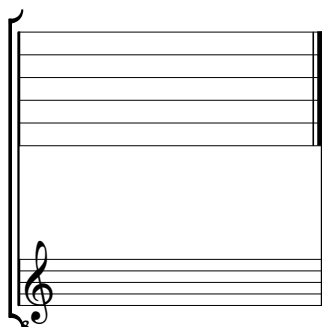
*r r r r r r r r | r r r r r r r r | r r r r r r r r*  
*4 (1\*) 4*



1. Les liaisons de cette mesure sont absentes de la tablature originale.

# Accord du luth : Do majeur

*Pas de scordature par octave*



*Accord ordinaire des 12 chœurs du luth*

Musical notation for the ordinary 12-voice lute chord. The top staff shows six notes, each labeled with a lowercase 'a', ascending from the first to the sixth line. The bottom staff shows a sequence of notes: a quarter note on the first line, a quarter note on the second line, a quarter note on the second space, a quarter note on the third line, a quarter note on the third space, a quarter note on the fourth line, a quarter note on the fourth space, a quarter note on the fifth line, a quarter note on the fifth space, a quarter note on the sixth line, a quarter note on the sixth space, and a quarter note on the seventh line. The notes are labeled 'a / a // a // a 4 5'.