

Schaffnitz

La chasse de M: Schaffniz

[Fa majeur]

Manuscrits Harrach, Schloß Rohrau

Ms Harrach I (Schloß Rohrau)

Folios 84 et 85

De M: Schaffniz

La chasse

3/8

Handwritten musical notation for measures 1-6. The staff shows notes and rests with dynamic markings like *ff* and *hf*. Below the staff, the notes are transcribed as 'a a a a a a a a a a a a'.

7

Handwritten musical notation for measures 7-13. The staff shows notes and rests with dynamic markings like *f* and *ff*. Below the staff, the notes are transcribed as 'lla la a/alla llla lla lallalla 4 llla lolla 4 a'.

14

Handwritten musical notation for measures 14-21. The staff shows notes and rests with dynamic markings like *F* and *ff*. Below the staff, the notes are transcribed as 'a a a a a a/alla lallalla 4 llla lla'.

22

Handwritten musical notation for measures 22-29. The staff shows notes and rests with dynamic markings like *ff* and *ffr*. Below the staff, the notes are transcribed as 'la a 4 44 lla a a 4 llla lolla 4 a r a'.

30

Handwritten musical notation for measures 30-38. The staff shows notes and rests with dynamic markings like *ff* and *ffr*. Below the staff, the notes are transcribed as 'a a a llla llla llla llla'.

39

Handwritten musical notation for measures 39-48. The staff shows notes and rests with dynamic markings like *ff* and *ffr*. Below the staff, the notes are transcribed as 'lla llla llla llla lla lla llla'.

49

Handwritten musical notation for measures 49-56. The staff shows notes and rests with dynamic markings like *f* and *ff*. Below the staff, the notes are transcribed as 'lla r 4 llla alla lla lallalla 4 r r a/alla a a'.

57

Handwritten musical notation for measures 57-64. The staff shows notes and rests with dynamic markings like *ff* and *ffr*. Below the staff, the notes are transcribed as 'a a alla lalla lalla llla a a 4 llla lla lalla la'.

65

65

a r f g h a a a a a r a a r a a r a a r a a r a a r a a r

a la // a a a a 4 a a 6 a a la a la 6 a a la // a // a

72

72

a r a f f f a f f a f f a f f a f e e f a r a f a

la 6 6 4 4 4 4 4 4 4 a la

80

80

a r a a f f a f f a f f a f a r e r a f a g a a a a a a a a a a

lla lla alla 4 4 la aa 4 la

87

87

a a a a e e a e e e a r r a a a a r a r a a a a r a

la la a a a Adagio a r r a a a a r a r a a a a r a

93

93

e a a f f f a

a la a la lla 4 la e e e

98

98

f f f a a e f h a f e a a a f e a a a

e e r r 4 a lla la 4 lla la 4

102

102

la

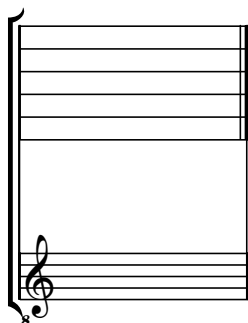
(1*)

Selon Ernst Gottlieb Baron, le luthiste Schaffniz fut, au XVIIIème siècle, lieutenant dans l'armée bavaroise et vécut à Coire (ou Chur, chef-lieu du canton suisse des Grisons).

1. Original : aussi si naturel (c sur le 3ème chœur).

Tonalité : fa majeur

Pas de scordatura par octave



Accord ordinaire des 11 chœurs du luth

