

*[Compositeur anonyme]*

# Prélude (Prælude)

Ré mineur  
*Luth baroque à 11 chœurs*

**Manuscrit de Göttweig 1, A-GÖ1**  
*Bibliothèque de l'abbaye bénédictine de Göttweig*  
*Archives musicales*  
(A-GÖ ms. Lautentabulatur Nr. 1)  
*Folio 13v.*



# Prélude (Prælude)

Handwritten musical score for 'Prélude (Prælude)' in G minor, consisting of six systems of staves. The notation includes notes, rests, slurs, and various performance markings.

**System 1:** Features a melodic line with notes *a a a a a a a a e\** and a lower line with notes *r a r a e r a r a r a r a r*. It includes slurs and dynamic markings like *mf*.

**System 2:** Contains a melodic line with notes *r e f f e r a)* and a lower line with notes *r a a a a a a a*. It features triplets, slurs, and dynamic markings like *mf* and *f*.

**System 3:** Shows a melodic line with notes *i' i' h k' h g' g' (h' e' e' (f' e' e' (e' g' g' a' a* and a lower line with notes *a a a a a 4 e*. It includes slurs and dynamic markings like *mf* and *f*.

**System 4:** Features a melodic line with notes *e a' a' r e* and a lower line with notes *e a a a a 4 4 4 a a a a*. It includes slurs and dynamic markings like *f*.

**System 5:** Contains a melodic line with notes *f f a r e a a* and a lower line with notes *a a a e e 4 a a a*. It features slurs and dynamic markings like *f*.

**System 6:** Shows a melodic line with notes *r r r a) e a a a a r e* and a lower line with notes *e a a a a*. It includes triplets, slurs, and dynamic markings like *f*.

7

Handwritten musical notation for measure 7, consisting of two staves. The upper staff contains notes with stems and various accidentals (sharps, flats, naturals), along with rests. The lower staff contains mostly note heads with stems, some with accidentals. The notation is dense and characteristic of early manuscript notation.

8

Handwritten musical notation for measure 8, featuring a complex arrangement of notes and rests. The notation includes many note heads with stems, some with accidentals, and rests. The handwriting is very dense and intricate.

9

Handwritten musical notation for measure 9, showing a melodic line with a slur and a fermata. The notes are connected by a long horizontal line, and there are some accidentals. The notation is more fluid than the previous measures.

10

Handwritten musical notation for measure 10, including dynamic markings like 'f' and 'f\*'. The notation features notes with stems and accidentals, some with dynamic markings above them. There are also rests and some complex groupings of notes.

11

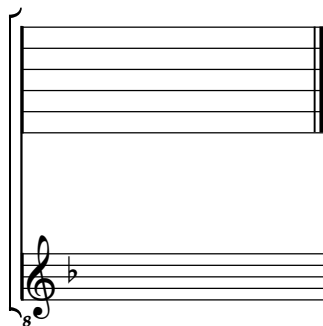
Handwritten musical notation for measure 11, ending with a double bar line and repeat signs. The notation includes notes with stems, accidentals, and rests. The handwriting is very dense and includes some complex groupings of notes.

19 Aug: 1737

# Tonalité : Ré mineur

*Accord ordinaire des basses du luth*

*Scordature par octave*



*Accord des 11 chœurs du luth*

