

[Compositeur anonyme]

Gigue (Guigue)

Do majeur

Manuscrit de Göttweig 1, A-GÖ1

Bibliothèque de l'abbaye bénédictine de Göttweig

Archives musicales

(A-GÖ ms. Lautentabulatur Nr. 1)

Folio 5v.

*Voir dans le manuscrit de Brno CZ-Bm371, page 103, Gigue (Guigue)
[CZBm371_55]*



Gigue (Guigue)

12
8

4 4

3

4 (1*)

5

7

4

11

12

(2*)

1. Original : liaison entre les deux notes précédentes
 2. Original : pas d'indication rythmique (x2)

15

Handwritten musical notation for measures 15 and 16. Measure 15 contains the notes *r a r r a r r r r r*. Measure 16 contains the notes *r r r r r r r r r r*. The bass line for measure 15 is *a* and for measure 16 is *r*.

17

Handwritten musical notation for measures 17 and 18. Measure 17 contains the notes *r r r r r r r r a r*. Measure 18 contains the notes *a r r a r a r a r a*. The bass line for measure 17 is *a* and for measure 18 is *a*.

19

Handwritten musical notation for measures 19 and 20. Measure 19 contains the notes *a r r a r a r*. Measure 20 contains the notes *r r r r e f r e*. The bass line for measure 19 is *a* and for measure 20 is *a*.

21

Handwritten musical notation for measures 21 and 22. Measure 21 contains the notes *g h f h g f h f f h f*. Measure 22 contains the notes *h h h h h h k h h k h*. The bass line for measure 21 is *a* and for measure 22 is *a a a a*.

23

Handwritten musical notation for measures 23 and 24. Measure 23 contains the notes *k k k k k k m k k m k*. Measure 24 contains the notes *l k l l m l k h k k m k*. The bass line for measure 23 is *a a a a* and for measure 24 is *a a a a*.

25

Handwritten musical notation for measures 25 and 26. Measure 25 contains the notes *h f h k k h f r f f h f*. Measure 26 contains the notes *r r r r e r r r a r*. The bass line for measure 25 is *a a a 4* and for measure 26 is *a 4*.

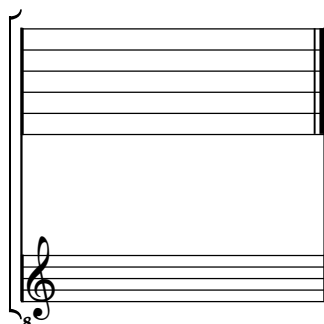
27

Handwritten musical notation for measures 27 and 28. Measure 27 contains the notes *e r a r a r r a a*. Measure 28 contains the notes *r r r r r r*. The bass line for measure 27 is *a a* and for measure 28 is *a 4*.

Tonalité : Do majeur

Accord ordinaire du luth

Scordature par octave



Accord ordinaire des 11 chœurs du luth

