

Johann Melchior Pichler

(1695 - 1780 ?)

[Partie]

M[elchior] Pichler

Intrada, La Tournée (La Tournée),
Aria (adagio), Menuet, Alla breve

La majeur

Luth baroque à 11 chœurs

Manuscrit de Göttweig 1, A-GÖ1

Bibliothèque de l'abbaye bénédictine de Göttweig

Archives musicales

(A-GÖ ms. Lautentabulatur Nr. 1)

Folios 50v. à 52r.

*Voir dans le manuscrit d'Haslemere GB-HAB2, pages 33 à 36 : Alla breve,
Intrada andante, Tournée, Menuet [Le Luth Doré Editions]*

*Voir dans le manuscrit de Munich D-Mbs5362, folio 37v : Tournée del
Sig.re Piechler (Mun55)*



[Partie] M[elchior] Pichler

Intrada

The musical score for the Intrada by Melchior Pichler is written on a single staff in common time (C). The piece consists of 12 measures, divided into four groups of three measures each. The notation includes various rhythmic values (quarter, eighth, and sixteenth notes) and rests. The notes are decorated with numerous ornaments, including mordents, grace notes, and trills. The key signature is one flat (B-flat major). The score is marked with a '4' below the staff at the beginning of each group of three measures, indicating a specific rhythmic pattern or tempo. The first measure of the first group starts with a common time signature 'C'. The second measure of the first group is marked with a double bar line and a slash, indicating a section break. The third measure of the first group is marked with a double bar line and a colon, indicating a repeat sign. The fourth measure of the first group is marked with a double bar line and a colon, indicating a second ending. The fifth measure of the first group is marked with a double bar line and a colon, indicating a first ending. The sixth measure of the first group is marked with a double bar line and a colon, indicating a second ending. The seventh measure of the first group is marked with a double bar line and a colon, indicating a first ending. The eighth measure of the first group is marked with a double bar line and a colon, indicating a second ending. The ninth measure of the first group is marked with a double bar line and a colon, indicating a first ending. The tenth measure of the first group is marked with a double bar line and a colon, indicating a second ending. The eleventh measure of the first group is marked with a double bar line and a colon, indicating a first ending. The twelfth measure of the first group is marked with a double bar line and a colon, indicating a second ending.

15

4 4 4

18

a a a a a

21

a a a

24

a a a R a

27

a a a (1*)

30

4 a a

La Tournée (La Tournèe)

♩
♩
♩
♩
♩
♩

(1')

4

7

12

16

20

1. Original : pas d'indication rythmique

23

e a r e r e r e r a e r (e b) b e r r a

a a a a a

27

r e a r r e b) r a g f g

a a a a a

31

e e e e e e r a r r r

a a a a a

35

a) a e r a e r a i h g e f e

a a a a a

39

r e r a e e e a e e a e

a a a a a

4

R

43

a e r e e r a e r) a r a e

a a a a

4

R

Aria

adagio

3

5

7

9

11

Ms. Göttweig 1, A-GÖ1, Johann Melchior Pichler, Partie en La majeur [A-GO1_33] Page 6

Menuet

♩ ♪ ♩
♩ ♪ ♩
♩ ♪

3
 4

4

9

13

18

23

28

a a a a a r R 4 a

32

a a r 4 a a a

37

a a a (1^*)

1. Original : Fa dièse (d sur le 5e chœur)

Alla breve

Handwritten musical score for a piece in Alla breve. The score is written on a grand staff (treble and bass clefs) and includes vocal line notation with lyrics. The piece is in 2/4 time. The score is divided into systems, with measure numbers 5, 12, 19, 25, 31, and 37 indicated at the beginning of each system.

The notation includes various rhythmic values (quarter, eighth, and sixteenth notes), rests, and dynamic markings such as *ff*, *f*, *mf*, *ff*, and *f*. There are also some unusual markings like *g** and *i** above notes. The lyrics are written below the notes, often with slurs and accents.

The score consists of the following systems:

- System 1: Measures 1-5. Lyrics: e e, r e a r, e a e, r e a r, e a r r.
- System 2: Measures 6-11. Lyrics: a, r r, r a, r r, r a, r r, e r r e a r.
- System 3: Measures 12-18. Lyrics: e e, r r, a e a, r r, a a, a a, e r.
- System 4: Measures 19-24. Lyrics: e, e r a, e* a e r, g a e r, e r a, i* r a, e.
- System 5: Measures 25-30. Lyrics: a r, g* a e r, e e*, e r, e r, a e.
- System 6: Measures 31-36. Lyrics: r r r, b b e, r r r, e e r, b r, b b.
- System 7: Measures 37-42. Lyrics: r r, a g, e e, r r, a e, e r, e e.

44

are a are a e re ar

4 a 4 a ff a ff 4

51

a a e e r e r e

ff a ff a 4 ff

59

r e a e r a e r e h

4 ff a ff a 4 ff a

66

g e r e r a a

ff a ff a ff a ff a

73

e e r e a r e a e r r

ff a ff a a

[R]

79

a a e e e r a e r a e r a e r a e r a

a ff 4 ff 4

84

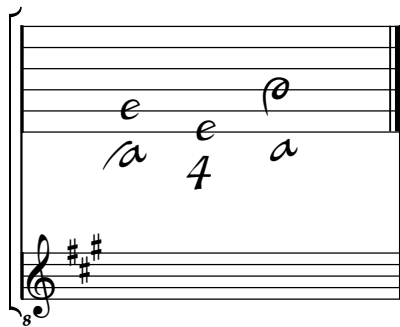
e g e g e r e a e

ff a 4 ff a

Tonalité : La majeur

Accord des basses du luth : 3 dièses

Scordature par octave



Accord des 11 chœurs du luth

