

**[Johann Melchior Pichler ?]**

[(1695 - 1780 ?)]

# [8 pièces]

Allemande, Allemande, Allemande  
La Tournée (La Tounee), Siciliana, Passepied, Siciliana,  
Paysanne (Paisane)

Sol majeur

## **Manuscrit de Göttweig 1, A-GÖ1**

*Bibliothèque de l'abbaye bénédictine de Göttweig*

*Archives musicales*

(A-GÖ ms. Lautentabulatur Nr. 1)

*Folios 41v. et 44v.*

*Voir dans le présent manuscrit A-GÖ1, folio 39r. : Paisame  
(A-GO1\_25)*



# Allemande

The image shows a handwritten musical score for an Allemande in C major. The score is written on a five-line staff with rhythmic notation above and fingering below. The piece is in common time (C). The notation includes various rhythmic values such as eighth, sixteenth, and thirty-second notes, as well as rests and accidentals. The fingering is indicated by numbers 1-5 and slurs. The score is divided into measures, with measure numbers 2, 4, 6, 8, and 10 marked on the left. The piece concludes with a double bar line and repeat dots.

12

Handwritten musical notation for system 12, measures 12-13. The top staff shows a melodic line with notes and rests. The bottom staff shows a bass line with notes and rests. The notes are mostly lowercase letters 'a', 'r', 'e', 'f'.

14

Handwritten musical notation for system 14, measures 14-15. The top staff shows a melodic line with notes and rests. The bottom staff shows a bass line with notes and rests. The notes are mostly lowercase letters 'a', 'r', 'e', 'f'.

16

Handwritten musical notation for system 16, measures 16-17. The top staff shows a melodic line with notes and rests. The bottom staff shows a bass line with notes and rests. The notes are mostly lowercase letters 'e', 'a', 'h', 'g', 'e', 'h', 'a', 'h', 'f', 'h'.

18

Handwritten musical notation for system 18, measures 18-19. The top staff shows a melodic line with notes and rests. The bottom staff shows a bass line with notes and rests. The notes are mostly lowercase letters 'e', 'f', 'e', 'a', 'r', 'r', 'a', 'p', 'e', 'r', 'a', 'r'. A '4' is written below the second measure of the bottom staff.

20

Handwritten musical notation for system 20, measures 20-21. The top staff shows a melodic line with notes and rests. The bottom staff shows a bass line with notes and rests. The notes are mostly lowercase letters 'r', 'a', 'r'. The system ends with a double bar line and repeat dots.

# Allemande

Handwritten musical score for Allemande, featuring a single melodic line on a five-line staff with rhythmic notation above and figured bass notation below. The score is divided into measures, with measure numbers 4, 8, 12, 16, and 20 indicated on the left. The notation includes various rhythmic values (quarter, eighth, sixteenth notes), rests, and accidentals. The figured bass uses letters 'a', 'r', 'e', 'f' and numbers '4' to indicate fingerings and intervals. A repeat sign with first and second endings is present in measures 12-13.

1. Fac-similé de l'original taché et illisible

23

a 6  
 a a r a r

27

a a r a 4 a a a a a a

31

a a a a a a a a

34

a R a (1\*) a (2\*)

38

a 4 |||a a

1. Original : liaison entre les deux notes précédentes  
 2. Original : plus d'indications rythmiques dans la mesure

# Allemande

M M N M M N 4 M

C  
a r b a r a r a r a r a r a

a a a r 4 a a

3 M M N M N M M

a r b r a a a r b r b r a a b r b r a r e r e r

a a a a a a a a a (1\*)

5 M N M N M N

e r e r e a r e r r e r (a f a r f e) f a

a r a e a a a a a

7 N N M N N N 4 M

r a r b e) a f a f e) f a e g e

a a a a a a a a

9 M N N M N M N 4 M

f h e f e f e f e e g g\*

a r b r e f F a a

a 4 e (2\*) a a

11 N M N M N M N M N M N

a b a r r a r a r a r a r a

a a a a a a a a

1. Original : pas d'indication rythmique  
2. Original : indication rythmique de noire

13

$\text{a}$   $\text{r}$   $\text{a}$   $\text{b}$   $\text{r}$   $\text{f}$   $\text{r}$  |  $\text{a}$   $\text{a}$   $\text{a}$   $\text{r}$   $\text{f}$   $\text{r}$

4

15

$\text{a}$   $\text{r}$   $\text{a}$   $\text{r}$   $\text{a}$   $\text{r}$   $\text{a}$   $\text{e}$   $\text{a}$   $\text{r}$   $\text{a}$  |  $\text{f}$   $\text{h}$   $\text{f}$   $\text{h}$   $\text{f}$   $\text{h}$   $\text{f}$   $\text{h}$   $\text{f}$

9

17

$\text{h}$   $\text{g}$   $\text{e}$   $\text{g}$   $\text{f}$   $\text{f}$   $\text{e}$  |  $\text{f}$  |  $\text{i}^*$   $\text{h}^*$   $\text{a}$   $\text{r}$

9

19

$\text{f}$   $\text{a}$   $\text{r}$   $\text{b}$   $\text{a}$  |  $\text{a}$   $\text{r}$   $\text{a}$   $\text{r}$   $\text{a}$   $\text{r}$   $\text{a}$   $\text{r}$   $\text{a}$   $\text{r}$   $\text{a}$   $\text{r}$

4

R

21

$\text{a}$   $\text{r}$   $\text{a}$   $\text{r}$   $\text{a}$   $\text{b}$   $\text{r}$   $\text{b}$  |  $\text{r}$   $\text{a}$   $\text{r}$   $\text{a}$   $\text{r}$

9

(\*)

1. Original : pas d'indication rythmique

# La Tournée (La Tounee)

2 4

*a a a a a a a a a a a a*

4

*a a a a a a a a a a a a*

9

*a a a a a a a a a a a a*

13

*a a a a a a a a a a a a*

17

*a a a a a a a a a a a a*

(\*)

21

*a a a a a a a a a a a a*

1. Original : pas d'indication rythmique



25

29

33

37

41

R

45

# Siciliana

1. Original : indication rythmique de noire pointée  
 2. Original : indication rythmique de croche non pointée

19

Handwritten notes: a) r e r e a a

22

Handwritten notes: a a r a a a a a a a

25

Handwritten notes: a a a a a a a a a a

28

Handwritten notes: a a a a a a a a a a

# Passepied (Pasepied)

3 8

f e | g f e | f a r | r a a

a //a //a r r

4

r, r a r r | a, a r | r, r a r r | a r e

a //a //a a a a

8

e r | e r r a r | r, r r

//a //a

13

r r r | r r r | r r r | r r a

//a //a //a //a a a

17

r e r e r | r, r a | r r a r r | r a r a

//a //a a

21

r a r | r, a | r r r | r e r

//a a r r a a a

25

$\text{R}$ 
 $\text{R}$

29

# Siciliana

1. 2. 3. 4. 5. 6. 7. 8. 9. 10. 11. 12.

(1\*)

13. 14. 15. 16. 17. 18. 19. 20. 21. 22. 23. 24. 25.

(2\*)

26. 27. 28. 29. 30. 31. 32. 33. 34. 35. 36. 37. 38. 39. 40.

(3\*)

41. 42. 43. 44. 45. 46. 47. 48. 49. 50. 51. 52. 53. 54. 55. 56. 57. 58. 59. 60.

(4\*)

61. 62. 63. 64. 65. 66. 67. 68. 69. 70. 71. 72. 73. 74. 75. 76. 77. 78. 79. 80.

(5\*)

81. 82. 83. 84. 85. 86. 87. 88. 89. 90. 91. 92. 93. 94. 95. 96. 97. 98. 99. 100.

(6\*)

1. Original : pas d'indication rythmique  
 2. Original : aucune indication rythmique dans la mesure

19

23

26

R

(\*)

1. Original : indication rythmique de noire pointée

# Paysanne (Paisane)

6

10

15

20

25

(1\*)

(2\*)

(3\*)

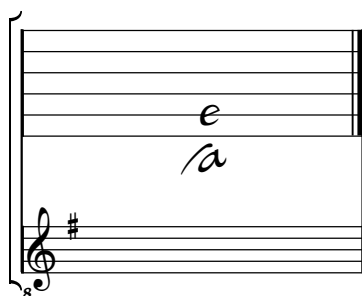
(4\*)

1. Originaux : La à l'octave au dessous (a sur le 3e chœur) mais La sur 2e chœur présent aussi dans l'original folio 39r
2. Original folio 44v : basse La absente
3. Original folio 39r : basse La absente
4. Originaux : indications rythmiques de blanche non pointée



# Tonalité et accord du luth : Sol majeur

*Scordature par octave*



*Accord des 11 chœurs du luth*



