

Johann Georg Zechner

(9 avril 1716 - 7 Juin 1778)

[2 pièces datées]

... (24 Febr: 1737:) - ... (25 Febr: 1737:)

Sol majeur

Manuscrit de Göttweig 1, A-GÖ1

Bibliothèque de l'abbaye bénédictine de Göttweig

Archives musicales

(A-GÖ ms. Lautentabulatur Nr. 1)

Folio 39v.



Musical notation system 1: A single staff with a treble clef. The first measure is marked with a '3' above the staff and a '4' below it. The notes are: quarter note G, quarter note A, quarter note B, quarter note C, quarter note D, quarter note E, quarter note F, quarter note G. The bass line below the staff contains notes: G, A, B, C, D, E, F, G. There are some handwritten markings like 'a' and 'r' under the notes.

Musical notation system 2: A single staff with a treble clef. The first measure is marked with a '5' above the staff. The notes are: quarter note G, quarter note A, quarter note B, quarter note C, quarter note D, quarter note E, quarter note F, quarter note G. The bass line contains notes: G, A, B, C, D, E, F, G. There are some handwritten markings like 'a', 'f', and 'r'.

Musical notation system 3: A single staff with a treble clef. The first measure is marked with a '10' above the staff. The notes are: quarter note G, quarter note A, quarter note B, quarter note C, quarter note D, quarter note E, quarter note F, quarter note G. The bass line contains notes: G, A, B, C, D, E, F, G. There are some handwritten markings like 'a', 'r', and '4'.

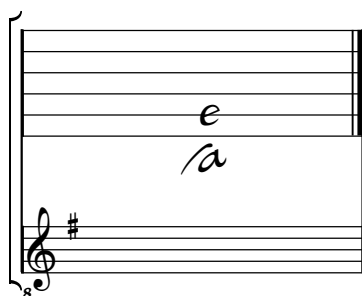
Musical notation system 4: A single staff with a treble clef. The first measure is marked with a '15' above the staff and a box containing the letter 'R'. The notes are: quarter note G, quarter note A, quarter note B, quarter note C, quarter note D, quarter note E, quarter note F, quarter note G. The bass line contains notes: G, A, B, C, D, E, F, G. There are some handwritten markings like 'a', 'r', and '4'.

25 Febr: 1737:

1. Original : Sol dièse (d sur le 4e chœur)
2. id.

Tonalité et accord du luth : Sol majeur

Scordature par octave



Accord des 11 chœurs du luth

