

Ferdinand Ignaz Hinterleithner

(ca 1659 - 2 déc. 1710)

Menuet

Menuet de Mr: C: Logie

Fa majeur

Manuscrit de Göttweig 1, A-GÖ1

Bibliothèque de l'abbaye bénédictine de Göttweig

Archives musicales

A-GÖ ms. Lautentabulatur Nr. 1

Folio 32v.

*Voir dans le manuscrit de Vienne A-Wn18761, folio 44v : Menuet (Menuette)
et Double [A-Wn18761_7]*

*Cette pièce figure dans le "Lauthen Concert" de Ferdinand Ignaz Hinterleithner,
volume édité par le compositeur à Vienne en 1699.*



Menuet de Mr: C: Logie

Handwritten musical score for "Menuet de Mr: C: Logie". The score is written in C major and 3/4 time. It consists of five systems of music, each with a treble and bass staff. The notation includes notes, rests, and dynamic markings such as *f* and *ff*. The piece concludes with a double bar line and repeat signs.

System 1 (Measures 1-4):
 Treble staff: \dot{h} $\overset{m}{i}$ \dot{h} \dot{h} | \dot{k} \dot{h} \dot{h} f | e r a | \dot{a} \dot{a} \dot{r}
 Bass staff: a | a | a | a

System 2 (Measures 5-8):
 Treble staff: \dot{a} r e | \dot{h} f f \dot{h} | f \dot{a} r a | \dot{a} \dot{r} \dot{a}
 Bass staff: a | a | a | a a 4 | a 4

System 3 (Measures 9-12):
 Treble staff: f' \dot{a} \dot{r} | e f' \dot{a} | \dot{a} \dot{a} r a | \dot{a} \dot{a}
 Bass staff: a | a | r a \dot{r} | a

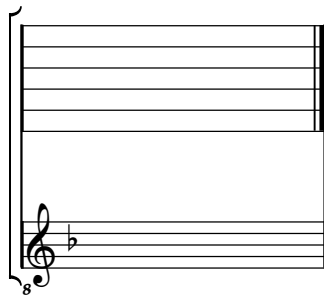
System 4 (Measures 13-16):
 Treble staff: \dot{r} \dot{r} | e f \dot{h} f | e f e | f
 Bass staff: a | a | e | a 4 a | a a

System 5 (Measures 17-20):
 Treble staff: f $\overset{m}{h}$ f \dot{h} | f \dot{h} f \dot{a} | r r \dot{r} | \dot{a}
 Bass staff: a | a | 4 | a | a 4 | a

Tonalité : Fa majeur

Accord ordinaire des basses du luth

Scordature par octave



Accord des 11 chœurs du luth



