

[Compositeur anonyme]

[3 pièces datées]

... (22 Novber 1736) - ... (31 December 1735) - ... (1 januarj 1736)

Ré mineur

Luth baroque à 11 chœurs

Manuscrit de Göttweig 1, A-GÖ1

Bibliothèque de l'abbaye bénédictine de Göttweig

Archives musicales

(A-GÖ ms. Lautentabulatur Nr. 1)

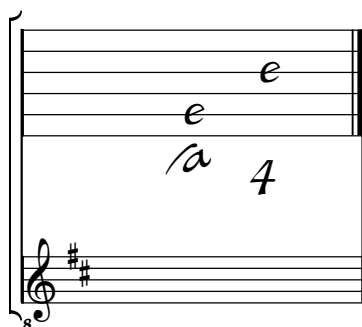
Folios 14v - 17r



Tonalité : Ré majeur

Accord des basses du luth : 2 dièses

Scordature par octave



Accord des 11 chœurs du luth



3 4

a a a r b *a a a b r* *a a a f p* *a a a a r*

lla *lla* *lla* *lla*

5

a a a a *r r r r r* *a r a* *a a*

lla *lla* 4 *lla* *lla*

9

e e e r a *r e r a a* *r e r a* *e e e r*

a *a* *a* *a* *lla*

13

e e *a a* *e a* *r e*

a *a/a/a* *la* *a/a/a* *lla* *lla/a a* *a* *a/a/a*

17

a a a r b *a a a b r* *a a a r b* *a a a a r*

lla *lla* *lla* *lla*

21

a a a a *a r a a* *e a r e* *a a*

la *a* *a* *la a a* *lla*

22 Novber 1736

Handwritten musical notation for measures 1-4. The system consists of two staves. The top staff has a treble clef and a 2/4 time signature. The bottom staff has a bass clef. The notes are: *a a* (measures 1-2), *a a r* (measures 3-4), *e r a* (measures 5-6), and *r e** (measures 7-8). Above the staves are rhythmic markings: a half note (♩) above each measure. Below the staves are fingerings: *lla* (measures 1-2), *lla* (measures 3-4), *la* (measures 5-6), and *a* (measures 7-8).

Handwritten musical notation for measures 5-9. The system consists of two staves. The notes are: *r r** (measures 5-6), *r e r* (measures 7-8), *a a e* (measures 9-10), *a a* (measures 11-12), and *b a* (measures 13-14). Above the staves are rhythmic markings: a half note (♩) above each measure. Below the staves are fingerings: *a* (measures 5-6), *e a* (measures 7-8), *a r* (measures 9-10), *e r* (measures 11-12), and *a e* (measures 13-14).

Handwritten musical notation for measures 10-14. The system consists of two staves. The notes are: *b a* (measures 10-11), *b a* (measures 12-13), *r r* (measures 14-15), *r r* (measures 16-17), and *r r* (measures 18-19). Above the staves are rhythmic markings: a half note (♩) above each measure. Below the staves are fingerings: *r a* (measures 10-11), *a la* (measures 12-13), *lla* (measures 14-15), *lla* (measures 16-17), and *4* (measures 18-19).

Handwritten musical notation for measures 15-18. The system consists of two staves. The notes are: *e a r* (measures 15-16), *e e** (measures 17-18), a triplet of *e e e* (measures 19-21), and *r e r r e r r r* (measures 22-24). Above the staves are rhythmic markings: a half note (♩) above measures 15-16, a half note (♩) above measures 17-18, a triplet marking (♩) above measures 19-21, and a half note (♩) above measures 22-24. Below the staves are fingerings: *la* (measures 15-16), *a* (measures 17-18), *a a a* (measures 19-21), and *a a a* (measures 22-24).

Handwritten musical notation for measures 19-21. The system consists of two staves. The notes are: *a a a a b a* (measures 19-21), *r e r r e r r r* (measures 22-24), and *b b b b a b* (measures 25-27). Above the staves are rhythmic markings: a half note (♩) above each measure. Below the staves are fingerings: *a a a* (measures 19-21), *a e r a e r r r* (measures 22-24), and *a r a r a a b* (measures 25-27).

Handwritten musical notation for measures 22-24. The system consists of two staves. The notes are: *r b r r b r r a* (measures 22-24), *e b e e b e e a* (measures 25-27), and *e e** (measures 28-29). Above the staves are rhythmic markings: a half note (♩) above each measure. Below the staves are fingerings: *a a a la* (measures 22-24), *a a a la* (measures 25-27), and *a* (measures 28-29).

25 *M*

a *a* *a* *//a* *//a* *//a a*

28 *M*

a *a* */a* *a* *//a* */a* */a*

31 *M*

a *a* *a r b a a a b a a r*

34 *M* *d.*

//a *//a*

31 December 1735

3 4

f e f^e f^e f^e f^e e e | *f e f^e f^e f^e f^e e e* | *f e f^e f e f f e f*

lla *lla* *lla* 4

4

f e f^e f e f f e f | *f e f^g f e f f e f* | *f e f^g f e f f e f*

e a a a a

7

f e f^g f e f^g f e f | *e f e^e e f e^g f e e* | *f e f^e f e f^g f e e*

lla *lla* *lla*

10

e g e e g e g g | *e g e e g e e g e* | *e g e e g e e g e* :||

lla *lla* *a a a*

13

e g e e g e e e e | *e g e e g e e e e* | *e g e e g e e e e*

a a a a a

16

g e g f g g g g | *e h e e e e e e* | *f f f h f f f e f*

a a a lla a lla lla lla a

19

Handwritten musical notation for measures 19-21. Measure 19: Treble clef, notes e, f, e, e, e, e, f. Bass clef, notes a, a, a, a, a. Measure 20: Treble clef, notes e, f, e, e, f, e, g, e, g, e. Bass clef, notes a, f. Measure 21: Treble clef, notes e, e, e, f, e, f, e, f. Bass clef, notes e, e, f, e, f.

22

Handwritten musical notation for measures 22-24. Measure 22: Treble clef, notes f, f, f, f, f, f, f, f. Bass clef, notes a, a, a, a, a, a, a, a. Measure 23: Treble clef, notes h, h, h, f, f, e, e, f, f, h, f. Bass clef, notes a, a, a, a, a, a, a, a. Measure 24: Treble clef, notes e, e, e, f, e, f, e, f. Bass clef, notes e, e, f, e, f.

25

Handwritten musical notation for measure 25. Treble clef, notes e, e, e, e, e, e, e, e. Bass clef, notes a, a, a, a, a, a, a, a. A double bar line with repeat signs follows.

1 janvier 1736

