

[Compositeur anonyme]

[Pièce sans titre]

Ré majeur
Luth baroque à 11 chœurs

Manuscrit de Göttweig 1, A-GÖ1
Bibliothèque de l'abbaye bénédictine de Göttweig
Archives musicales
(A-GÖ ms. Lautentabulatur Nr. 1)
Folio 20v.

3 4

5

10

15

20

25

1. Original : Sol (f sur le canto)

30

Handwritten notes below the staff: *ff* and *ff* (under the first and second measures respectively).

35

40

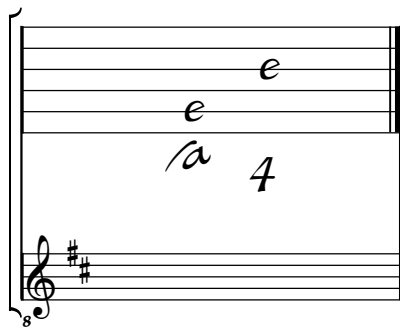
45

Handwritten notes below the staff: *ff* and *ff* (under the first and second measures respectively).

Tonalité : Ré majeur

Accord des basses du luth : 2 dièses

Scordature par octave



Accord des 11 chœurs du luth

A musical notation diagram for a lute chord. It consists of a lute fretboard diagram with six strings and a bass clef staff below it. The fretboard diagram shows the following notes: the top string (1st) has an 'a' on the 2nd fret; the second string (2nd) has an 'a' on the 1st fret; the third string (3rd) has an 'a' on the 1st fret; the fourth string (4th) has an 'a' on the 1st fret; the fifth string (5th) has an 'a' on the 1st fret; and the sixth string (6th) has an 'a' on the 1st fret. The fretboard diagram also shows a '4' on the 4th fret. The bass clef staff shows a key signature of two sharps (F# and C#) and an octave sign '8' below the staff.