

*[Compositeur anonyme]*

# [7 pièces datées]

... (1738 9 August) - ... (19 Sept 1736) - ... (27 decemb 1736) -  
... (31 December 1736) - ... (19 December 1736) -  
... (23 juny1736) - Courante (5 marzj 1736)

Ré mineur  
*Luth baroque à 11 chœurs*

**Manuscrit de Göttweig 1, A-GÖ1**  
*Bibliothèque de l'abbaye bénédictine de Göttweig*  
*Archives musicales*  
(A-GÖ ms. Lautentabulatur Nr. 1)  
*Folios 14v - 17r*



3 4

4

8

12

16

20

24

1. Original : note absente

1738: 9: August

1. Original : note absente

Handwritten musical score for a single melodic line, likely a flute or violin. The score is written on a grand staff (treble and bass clefs) and consists of 24 measures. The notation includes various rhythmic values (quarter, eighth, and sixteenth notes), rests, and dynamic markings (f, p). The piece concludes with a double bar line and a decorative flourish.

Measures 1-4: *3* e a a a e r | r a a a r a | b r b b | a a

Measures 5-8: r b p p b | b a r a | a a r a b a | a r a r | a a

Measures 9-12: r a r p | r a | e a a a e r | r a a a r a | a a

Measures 13-16: b a f e | f f :|| p r a a p b | b a r a b | a a

Measures 17-20: p a p a | r r p | r r e | f f f | a a

Measures 21-24: f f f f | e b p r | a e | e a a a e r | a a

Measures 25-28: r a a a r a | b a f e | f f :|| a a

19 Sept: 1736:

3 4

*a a a a a a a*

4

*a b a a a a a a a*

8

*a b b a a a a a a a*

12

*a a a a a a a e a a a*

16

*a a a a 4 a a a a 4 a*

20

*a a a a 4 a a a a a a*

24

4 4 (1)

28

R

32

R

27 december 1736:

1. Tablature originale : pas d'indication de notes détachées

3 4

*k*<sub>h</sub><sub>e</sub> *i* *k* *i* *k* *h* *k* *k*<sub>h</sub> *k*\* *f* *h* *h*<sub>f</sub>

*a* *a* *a* *a* *a* *a*

4

*h*\* *f* *f* *f*\* *r* *e* *e* *e* *a* *r* *a* *r*\* *f* *f* *f*

*a* *a* 4 4 *a* *a* *a* *a*

8

*f*\* *r* *f* *f* *a* *f* *e* *f* *a* *r* *r* *a* *a* *e* *a* *a* *e* *a* *r* *a* *e*

*a* *a* *a* *a* *a* *a*

12

*k*<sub>h</sub><sub>e</sub> *i* *k* *i* *k* *h* *k* *k*<sub>h</sub> *k*<sub>e</sub> *k*<sub>h</sub><sub>e</sub> *h* *i*

*a* *a* *a* *a* *a* *a*

15

*k* *k*<sub>h</sub><sub>e</sub> *k* *h* *i* *h* *i* *h*\* *i*\* *h*<sub>h</sub><sub>e</sub> *h*<sub>h</sub><sub>e</sub>

*a* *a* *a* *a* *a* *a*

19

*h*<sub>h</sub><sub>e</sub> *h*<sub>h</sub><sub>e</sub> *h*<sub>h</sub><sub>e</sub> *h* *h* *h* *h* *f* *f* *f* *f* *f* *e* *a* *e* *a*

4 4 *a* *a* *a* *a* *a* *a*

23

Handwritten musical notation for measures 23-26. The notation includes notes on a staff and a bass line below. Measure 23: quarter notes e, a, f on a staff with a bass line 'a'. Measure 24: quarter notes e, a, f on a staff with a bass line 'a'. Measure 25: quarter notes e, f on a staff with a bass line 'a'. Measure 26: quarter notes e, a, f on a staff with a bass line 'a'.

27

Handwritten musical notation for measures 27-29. The notation includes notes on a staff and a bass line below. Measure 27: quarter notes e, a, a, e, a, f, a on a staff with a bass line 'a'. Measure 28: quarter notes k, h, e on a staff with a bass line 'a'. Measure 29: quarter notes k, h, k, k, h on a staff with a bass line 'a'.

30

Handwritten musical notation for measures 30-32. The notation includes notes on a staff and a bass line below. Measure 30: quarter notes k, h, k on a staff with a bass line 'a'. Measure 31: quarter notes k, h, k, i on a staff with a bass line 'a'. Measure 32: quarter notes k, f, G on a staff with a bass line 'a'.

31 december 1736:

3 *m m* *n* *n* *a r r a r a e a* | *f e f e f a*

4

*a a a a*

3 *n m n* *n* *n* *a r* | *e r r e* | *a* *o* *o*

4 *a a a* *b a a*

6 *n m n* *n* *n m n*

*a r a b o* | *a o b* | *a r a b o*

*a a* *b a a* *a a*

(1\*) (2\*)

9 *n* *n m n* *n* *n m n*

*a r o r* | *a a* | *a r e r a h f h f*

*b a* *a* *a*

4

12 *n* *n m n* *n* *n m n*

*h f h f a* | *a a o a b a* | *a r a b a o a*

*a* *b a a* *a a*

(3\*)

15 *n* *n m n* *n*

*a a o a b a* | *a r a b a o a* | *a a a b r r*

*b a a* *a a* *a*

(4\*)

- 1. Original : pas d'indication rythmique
- 2. Original : pas d'indication rythmique
- 3. Original : pas d'indication rythmique
- 4. Original : pas d'indication rythmique



18

Handwritten musical notation for measures 18-20. Measure 18: Treble clef, notes e, a, r, a. Bass clef, notes a, e. Measure 19: Treble clef, notes a, r, a, r, a, a. Bass clef, notes a, r, a, a. Measure 20: Treble clef, notes e, e, e, a. Bass clef, notes a, a, a.

21

Handwritten musical notation for measures 21-22. Measure 21: Treble clef, notes r, f, e. Bass clef, notes a, r. Measure 22: Treble clef, notes a, a, a, a. Bass clef, notes a, a, a, a. Ends with a double bar line and a fermata over the final notes.

19 december 1736 :

3 4

4

7

10

13

17

20

23

26

29

32

Da Capo

⊕ Fin : 34

37

23 juny 1736 :

# Courante

3 4

eræe aa | aa aa aa | ra r r er | re ere

||a ||a (1\*)

5

æraa aa | aa aa aa | æ r r a r a | e a r a

||a a

9

e f e g e | r e r e r | a r r a r a | a æ a e a

a a a a

13

a æ a æ a | æ a e | æ r a r a e a | f e f e f e

a a ||a ||a ||a ||a ||a a a

17

a r a a a | æ a æ a a | a æ æ

a a a a

||a ||a

21

a r a | eræe aa | r a a r a a | r a r r æ r

a a ||a ||a (2\*)

1. Original : pas d'indication rythmique  
2. Original : pas d'indication rythmique

25

29

33

37

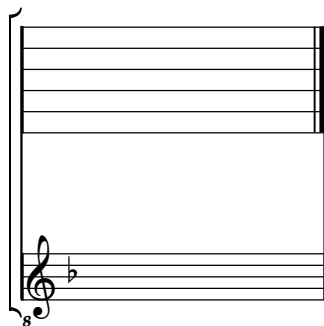
41

5 marzj 1736 :

# Tonalité : Ré mineur

*Accord ordinaire des basses du luth*

*Scordature par octave*



*Accord des 11 chœurs du luth*

