

***Germain Pinel***  
(vers 1600 - octobre 1661)

# [3 pièces]

Allemande Pinel, [Courante], Sarab Pinel

CLFPin, N°24, N°49, N°61

Sol mineur

## **Manuscrit de Darmstadt D-DS1655**

*Darmstadt, Universitäts- un Landesbibliothek Darmstadt*

D-DS Ms. Mus.1655

*folios 27v à 30r*

*Voir dans le manuscrit de Berlin D-Bsa4060, pages 418 et 419 (folios 186v et 187r), Sarabande (DBsa4060\_203)*

# Allemande Pinel

Handwritten musical score for Allemande Pinel, measures 1-10. The score is written on a grand staff with treble and bass clefs. The notation includes rhythmic values (quarter, eighth, and sixteenth notes), rests, and dynamic markings such as *f* (forte) and *ff* (fortissimo). Fingerings are indicated by numbers 1-5. Some notes are marked with an 'x' above them. Measure 10 ends with a double bar line and repeat dots. The piece concludes with the notes 'are' in measure 10.

1. Original : indication rythmique de blanche

11

Handwritten musical notation for measure 11, featuring two staves with notes, stems, and flags. The notation includes various accidentals and articulation marks.

13

Handwritten musical notation for measure 13, featuring two staves with notes, stems, and flags. The notation includes various accidentals and articulation marks.

15

Handwritten musical notation for measure 15, featuring two staves with notes, stems, and flags. The notation includes various accidentals and articulation marks. The piece ends with a double bar line and a decorative flourish.

[Courante]

Musical notation for the first system, measures 1-4. The first measure is marked with a '3' and 'f f'. The second measure has 'f f f h f' above and 'a' below. The third measure has 'h f f e' above and 'a' below. The fourth measure has 'f a a' above and 'a' below.

Musical notation for the second system, measures 5-10. Measure 5 has 'f a b' above and 'a' below. Measure 6 has 'r a' above and 'a' below. Measure 7 has 'x f e' above and 'a' below. Measure 8 has 'a' above and 'a' below. Measure 9 has 'g f e' above and 'a' below. Measure 10 has 'f a f f' above and 'a' below.

Musical notation for the third system, measures 11-16. Measure 11 has 'a f' above and 'a' below. Measure 12 has 'a' above and 'a' below. Measure 13 has 'a' above and 'a' below. Measure 14 has 'a r r a' above and 'a' below. Measure 15 has 'a r e' above and 'a' below. Measure 16 has 'f a' above and 'a' below.

Musical notation for the fourth system, measures 17-21. Measure 17 has 'r' above and 'a' below. Measure 18 has 'e r r' above and 'a' below. Measure 19 has 'f e f r' above and 'a' below. Measure 20 has 'e r r a a' above and 'a' below. Measure 21 has 'x r' above and 'a' below.

Musical notation for the fifth system, measures 22-25. Measure 22 has 'f r e' above and 'a' below. Measure 23 has 'r a a' above and 'a' below. Measure 24 has '(r' above and 'a' below. Measure 25 has 'r a' above and 'a' below. The system ends with a double bar line and a decorative flourish.

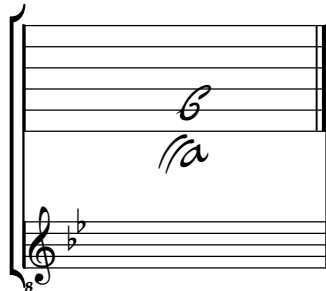
# Sarab: Pinel

The image displays a handwritten musical score for a piece titled "Sarab: Pinel" by Germain Pinel. The score is written on five systems of a grand staff (treble and bass clefs). The music is in 3/4 time, as indicated by the '3' at the beginning of the first system. The notation includes various note values (quarter, eighth, and sixteenth notes), rests, and dynamic markings such as 'f' (forte) and 'a' (accents). There are also performance instructions like 'era' and '4' (likely indicating a four-measure rest or a specific measure count). The score concludes with a double bar line and a repeat sign.

# Tonalité : Sol mineur

*Accord des basses du luth : Mi bémol*

## *Scordature par octave*



## *Accord des 11 chœurs du luth*

