

Ferdinand Ignaz Hinterleithner

(ca 1659 - 2 déc. 1710)

[Partie]

La mineur

Manuscrit de Cracovie PL-Kj40633

Kraków, Biblioteka Jagiellońska

PL-Kj ms. mus. 40633 (olim: Berlin)

Folios 33v à 35v



Allemande

Handwritten musical score for Allemande, featuring rhythmic notation above and tablature below. The score is divided into systems, with measure numbers 4, 8, 12, 16, 21, and 26 indicated on the left.

System 1 (Measures 1-3): Rhythmic notation: ♩, ♩. ♩. ♩, ♩ ♩ ♩, ♩ ♩ ♩. Tablature: C e, e f a, a r f f, f a a r a, a r r a, f 5.

System 2 (Measures 4-7): Rhythmic notation: ♩ ♩ ♩, ♩. ♩ ♩, ♩ ♩ ♩, ♩ ♩ ♩. Tablature: a a a, a a f a, a a r a, a a r a, 5 a a, f a r, a 4 a, a 4 a a, 4 r 6.

System 3 (Measures 8-11): Rhythmic notation: ♩ ♩, ♩ ♩ ♩, ♩ ♩ ♩, ♩ ♩ ♩. Tablature: f e r e r e, f a r g r e, r g b r, a r a r r, a a, a a r, a a r r.

System 4 (Measures 12-15): Rhythmic notation: ♩ ♩ ♩, ♩ ♩ ♩, ♩ ♩ ♩, ♩ ♩ ♩. Tablature: 6 r r, 6 r r, r a r f f, a r g f, f a a, a a.

System 5 (Measures 16-20): Rhythmic notation: ♩ ♩ ♩, ♩ ♩ ♩, ♩ ♩ ♩, ♩ ♩ ♩. Tablature: f r 6 g, e f, f r a, g a a, 5 r a a, r r, r a, a a, a a.

System 6 (Measures 21-25): Rhythmic notation: ♩ ♩ ♩, ♩ ♩ ♩, ♩ ♩ ♩, ♩ ♩ ♩. Tablature: a a a, a a a, 6 a a, r e a r, a e g h, r e g.

System 7 (Measures 26-28): Rhythmic notation: ♩ ♩ ♩, ♩ ♩ ♩. Tablature: a r, e a r, e a r, a.

The score concludes with a decorative floral ornament.

Sarabande

3

3

4

4

8

4

12

4

16

4

Courante

1. Original : pas d'indication rythmique

2. Original : pas d'autre indication rythmique dans la mesure que la noire du premier temps

Bourrée

1 2 3 4 5 6 7 8

5 2 3 2 1 2 3 2 1 2 3 2 1 2 3 2 1

3 4 5 6 7 8 9 10 11 12

2 3 4 3 2 1 2 3 4 3 2 1 2 3 4 3 2 1

6 7 8 9 10 11 12 13 14 15 16

1 2 3 4 3 2 1 2 3 4 3 2 1 2 3 4 3 2 1

9 10 11 12 13 14 15 16 17 18 19 20

2 3 4 3 2 1 2 3 4 3 2 1 2 3 4 3 2 1

R

13 14 15 16 17 18 19 20 21 22 23 24

1 2 3 4 3 2 1 2 3 4 3 2 1 2 3 4 3 2 1

Menuet

Handwritten musical score for a Minuet in A minor, featuring rhythmic notation above and tablature below.

Measures 1-5: Rhythmic notation: ♩ ♪ ♩ ♩ ♩ ♪ ♩ ♩. Tablature: 3 a | r a | r a r a | r a | a r. Fingering: a, a, a, a, a.

Measures 6-11: Rhythmic notation: ♩ ♪ ♩ ♩ ♩ ♩ ♩ ♩. Tablature: a | r | a r a a | r a | r a | r a r a | r a. Fingering: 4, a, b, a, a, a, a.

Measures 12-16: Rhythmic notation: ♩ ♩ ♩ ♩ ♩ ♩ ♩ ♩. Tablature: a | a | a | a | a | a | a | a. Fingering: a, a, a, a, a, a, a, a.

Measures 17-21: Rhythmic notation: ♩ ♩ ♩ ♩ ♩ ♩ ♩ ♩. Tablature: a a | a a | a a | a a | a a | a a | a a | a a. Fingering: a, a, a, a, a, a, a, a.

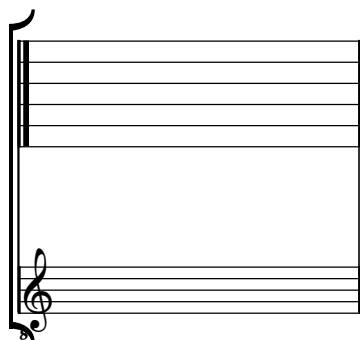
Measures 22-26: Rhythmic notation: ♩ ♩ ♩ ♩ ♩ ♩ ♩ ♩. Tablature: a r a | a r a | a r a | a r a | a r a | a r a | a r a | a r a. Fingering: a, a, 4, a, a, 4, a, a.

Measures 27-30: Rhythmic notation: ♩ ♩ ♩ ♩ ♩ ♩ ♩ ♩. Tablature: a r a | a r a | a r a | a r a. Fingering: a, a, a, 4, a, a.

Tonalité : La mineur

Accord ordinaire du luth

Scordature par octave



Accord des 11 chœurs du luth



