

[Friedrich Wilhelm Raschke ?]

(1706 - 1762)

eine Fant.

Ré majeur

Manuscrit de Cracovie PL-Kj40633

Kraków, Biblioteka Jagiellońska

PL-Kj ms. mus. 40633 (olim: Berlin)

Folio 40r



D^d. eine Fant.

Handwritten musical notation for the first system. It consists of a single staff with three lines. The notes are: *i* (quarter), *k* (quarter), *h* (quarter), *k* (quarter), *e* (quarter), *r* (quarter), *a* (quarter), *e* (quarter), *e* (quarter), *r* (quarter), *a* (quarter), *a* (quarter), *b* (quarter), *r* (quarter), *a* (quarter). There are three triplet markings (a '3' with a slur) over the first three notes (*i k h*), the next three notes (*e r a*), and the last three notes (*e r a*). A downward-pointing stem is above the first *k* and the first *e*.

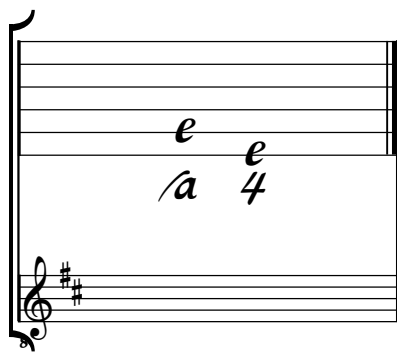
Handwritten musical notation for the second system, starting at measure 4. It consists of a single staff with three lines. The notes are: *a* (quarter), *e* (quarter), *r* (quarter), *r* (quarter), *b* (quarter), *r* (quarter), *b* (quarter), *r* (quarter), *a* (quarter), *r* (quarter), *a* (quarter), *e* (quarter), *a* (quarter), *a* (quarter), *b* (quarter), *a* (quarter), *a* (quarter), *b* (quarter), *a* (quarter). There are two triplet markings (a '3' with a slur) over the 12th and 13th notes (*e a a*) and the 15th and 16th notes (*b a a*). A downward-pointing stem is above the 11th note (*e*).

Handwritten musical notation for the third system, starting at measure 8. It consists of a single staff with three lines. The notes are: *a* (quarter), *b* (quarter), *r* (quarter), *a* (quarter), *b* (quarter), *b* (quarter), *b* (quarter), *a* (quarter), *b* (quarter), *a* (quarter), *b* (quarter), *a* (quarter). There are seven triplet markings (a '3' with a slur) over the 1st, 2nd, 3rd, 4th, 5th, 6th, and 7th notes. A downward-pointing stem is above the 11th note (*b*).

Tonalité : Ré majeur

Accord des basses du luth : 2 dièses

Scordature par octave



Accord des 13 chœurs du luth

Musical notation for the 13-voice lute chord. It consists of a six-line staff with a treble clef and a key signature of two sharps (F# and C#). The notes are: the 1st line (E), the 2nd space (A), the 3rd space (A), the 4th space (A), the 5th space (A), and the 6th space (A). The notes are labeled with 'a' below them. Below the 6th space, there is a sequence of notes: 'a / a // a /// a 4 5 6', indicating the positions of the 13 voices.

