

[Compositeur anonyme]

Furlana

Ré majeur

Manuscrit de Bruxelles B-Bc15

Bibliothèque du Conservatoire Royal de Musique de Bruxelles

B-Bc Ms. Littera S. N° 15.132

Page 56

*Voir dans le manuscrit d'Haslemere GB-HAB2, page 40, Allegro
(Has21)*



Furlana

♩ ♪ ♩
♩
♩ ♪ ♩

2	e a e a r	(e r)
4	a	a

p

4

♩
♩ ♪ ♩
♩ ♪ ♩
♩ ♪ ♩

(e r)	e a e a r	e a e a r	e r e r e
a	a	a	a

f

8

♩
♩ ♪ ♩
♩
♩ ♪ ♩

r	e r e	g	i g i
a	a	a	a

12

♩
♩ ♪ ♩
♩ ♪ ♩
♩ ♪ ♩ ♪

k	e r e	r r r	e r a r a e
a	a	a	a

16

♩
♩ ♪ ♩
♩
♩ ♪ ♩

g	e a e a r	e r	e a e a r
a	a	a	a

20

♩
♩ ♪ ♩
♩ ♪ ♩
♩ ♪ ♩

(e r)	r a r e r e	e e e e	e r a e r a e r
a	a	a	a

24

a a *k h k h k h h* *k* *i g i g i g g*
a a *a a* *a a* *a a*

R

28

i *g e f e f e e* *f e g e*
a a a a *a a* *a a 4*

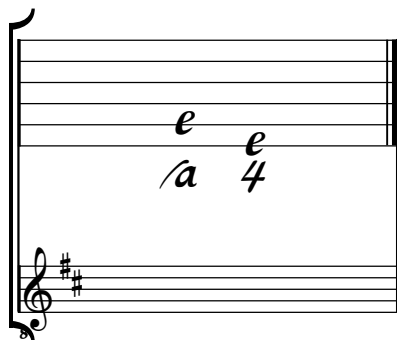
31

e a e a e *g f*
a a *a a*

Tonalité : Ré majeur

Accord des basses du luth : 2 dièses

Scordature par octave



Accord des 11 chœurs du luth

The diagram shows a lute fretboard with six strings. The top two strings are labeled with 'a' on the first fret, 'a' on the second fret, 'a' on the third fret, 'a' on the fourth fret, and 'a' on the fifth fret. The bottom two strings are labeled with 'a' on the first fret, 'a' on the second fret, 'a' on the third fret, 'a' on the fourth fret, and '4' on the fourth fret. Below the fretboard is a bass clef staff with a key signature of two sharps (F# and C#). The staff contains a sequence of notes: F#4, G4, A4, B4, C5, F#3, G3, A3, B3, C4, F#3, C4.