

**[*Silvius Leopold Weiss*]**

(1687 - 16 oct. 1750)

# Rigaudon

WeissSW80.7

Ré mineur

**Manuscrit de Brno CZ-Bm372**

*Musée morave régional à Brno*

*Provenance : bibliothèque musicale de l'abbaye de Rajhrad 5.b.*

(CZ-Bm Ms. sig. A.372)

*Page 19*

*Voir dans le manuscrit Harrach Schloß Rohrau A-ROI, page 70 (folio 37r.),  
Rigaudon de [Partie 80] de M: Weis, en Ré mineur. (HR7)*



## Rigaudon

The musical score for 'Rigaudon' is presented in five systems, each with a vocal line and a basso continuo line. The key signature is one flat (Ré mineur) and the time signature is common time (C). The notes are written in a stylized, handwritten style.

**System 1 (Measures 1-4):** The vocal line starts with a half note 'a', followed by a quarter note 'a', a quarter note 'r', and a quarter note 'a'. The basso continuo line has a whole note 'a' in the first measure, followed by a half note 'a' and a half note 'r' in the second measure, and a half note 'a' and a half note 'r' in the third measure. A first ending bracket labeled '(1\*)' spans the second and third measures of the basso continuo line.

**System 2 (Measures 5-8):** The vocal line continues with a quarter note 'e', a quarter note 'r', a quarter note 'e', and a quarter note 'a', followed by a quarter note 'a', a quarter note 'r', and a quarter note 'a'. The basso continuo line has a whole note 'a' in the first measure, followed by a half note 'a' and a half note 'r' in the second measure, and a half note 'a' and a half note 'r' in the third measure. A second ending bracket labeled '(2\*)' spans the first and second measures of the basso continuo line.

**System 3 (Measures 9-12):** The vocal line starts with a dotted quarter note 'a', followed by a quarter note 'r', a quarter note 'e', and a quarter note 'f', followed by a quarter note 'h', a quarter note 'a', and a quarter note 'r'. The basso continuo line has a whole note 'a' in the first measure, followed by a half note 'a' and a half note 'r' in the second measure, and a half note 'a' and a half note 'r' in the third measure. A repeat sign is present at the beginning of the system.

**System 4 (Measures 13-16):** The vocal line continues with a quarter note 'r', a quarter note 'a', a quarter note 'r', and a quarter note 'e', followed by a quarter note 'f', a quarter note 'h', and a quarter note 'a'. The basso continuo line has a whole note 'a' in the first measure, followed by a half note 'a' and a half note 'r' in the second measure, and a half note 'a' and a half note 'r' in the third measure. The number '4' is written below the first and last measures of the system.

**System 5 (Measures 17-20):** The vocal line starts with a dotted quarter note 'a', followed by a quarter note 'e', a quarter note 'f', and a quarter note 'r', followed by a quarter note 'e', a quarter note 'r', and a quarter note 'a'. The basso continuo line has a whole note 'a' in the first measure, followed by a half note 'a' and a half note 'r' in the second measure, and a half note 'a' and a half note 'r' in the third measure.

**System 6 (Measures 21-24):** The vocal line continues with a dotted quarter note 'e', followed by a quarter note 'a', a quarter note 'r', and a quarter note 'e', followed by a quarter note 'a', a quarter note 'e', and a quarter note 'a'. The basso continuo line has a whole note 'a' in the first measure, followed by a half note 'a' and a half note 'r' in the second measure, and a half note 'a' and a half note 'r' in the third measure.

1. Aussi une basse Do-dièse (e sur le 6e chœur) dans la version du manuscrit Harrach A-ROI

2. Original : indication rythmique de noire non pointée

24

Handwritten musical notation for measures 24-27. The melody consists of eighth and quarter notes. The bass line is a constant 'a'.

28

Handwritten musical notation for measures 28-31. The melody consists of quarter and eighth notes. The bass line consists of quarter notes 'a'.

32

Handwritten musical notation for measures 32-35. The melody consists of quarter and eighth notes. The bass line consists of quarter notes 'a'. A '(1\*)' is written below the first 'a' in measure 32.

35

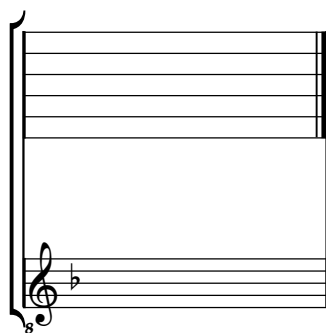
Handwritten musical notation for measure 35. The melody consists of quarter notes. The bass line consists of quarter notes 'a'. The piece ends with a double bar line and a decorative flourish.

1. Original : indication rythmique de double-croche

# Tonalité : Ré mineur

*Accord ordinaire du luth*

*Scordature par octave*



*Accord des 11 chœurs du luth*

