

***Aureus Dix***  
(1668 - 7 juillet 1719)

# [Partie]

Allemande (Allemanda), Courante, Gavotte,  
Ballo, Menuet, Gigue

Sol mineur

**Manuscrit de Brno CZ-Bm372**

*Musée morave régional à Brno*

*Provenance : bibliothèque musicale de l'abbaye de Rajhrad 5.b.*

*(CZ-Bm Ms. sig. A.372)*

*Pages 53 à 56*



# Authore Aureo Dix

## Allemande (Allemanda)

Sol mineur

1. Tablature originale : 2 croches

11

13

15

17

R

19

1. Tablature originale : présence d'un Ré (a sur le 5e chœur) avant ce Fa

# Courante

Sol mineur

3

(1\*)

6

12

(2\*)

17

23

R

28

(3\*)

1. Tablature originale : Fa (a sur la chanterelle)
2. Tablature originale : blanche pointée
3. Tablature originale : note ne figurant pas sur le fac-similé

# Gavotte

Sol mineur

Handwritten musical score for Gavotte in G minor, measures 1-15. The score is written on a grand staff (treble and bass clefs) with a common time signature (C). The notes are written in a cursive, handwritten style. The key signature is one flat (Bb). The score is divided into measures by vertical bar lines. Measure 1 starts with a common time signature 'C'. Measure 3 is marked with a '3' above the staff. Measure 6 is marked with a '6' above the staff. Measure 8 is marked with an '8' above the staff. Measure 12 is marked with a '12' above the staff. Measure 15 is marked with a '15' above the staff. The notes are labeled with letters 'a', 'b', 'c', 'd', 'e', 'f', 'g' and accidentals (sharps, flats, naturals). There are also some decorative flourishes and a large scribble at the end of measure 15. The score includes various musical notations such as slurs, ties, and repeat signs.

# Ballo

Si-bémol majeur

Da Capo

1. Tablature originale : Barre de mesure avant cet accord et signe de croche  
 2. Tablature originale : pas d'indication rythmique

# Menuet

Sol mineur

3

4

7

11

15

(\*)

R

R

# Gigue

Sol mineur

3 8

r a b r a b a a

5

b a r r b b e a a a a b a a b a b

11

a a b b a a b a r b a a b a \*

17

a f f a a a a b a a b a

(1\*)

22

a b a r r r e r a a b a r

28

b a a r a b a a a a a r e

4

1. Tablature originale : les notes des 3e et 4e chœurs sont inversées



34

Handwritten musical notation for measures 34-39. The top staff contains notes with slurs and accents. The bottom staff contains bass clef notes with slurs and accents.

40

Handwritten musical notation for measures 40-44. Includes a **ff** dynamic marking and a boxed **R** below the first measure.

45

Handwritten musical notation for measures 45-50. Includes **f** and **h** markings and a **4** below the first two measures.

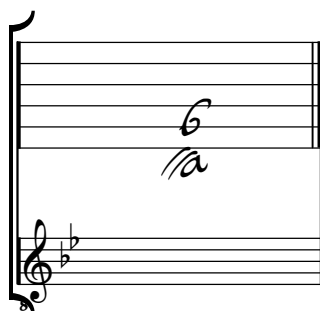
51

Handwritten musical notation for measures 51-54. Ends with a double bar line and a large scribble.

# Tonalités : Sol mineur et Si-bémol majeur

*Accord des basses du luth : 1 bémol*

*Scordature par octave*



*Accord des 11 chœurs du luth*

