

Emond

(? - ?)

Courante

La majeur

Luth baroque à 11 chœurs

Manuscrit de Brno CZ-Bm371

Musée morave régional à Brno

Provenance : bibliothèque musicale de l'abbaye de Rajhrad 5.a.

(CZ-Bm Ms. sig. A.371)

Page 6

Courante attribuée à Emond dans le manuscrit A-ETgoëss Ms. I



Courante

The image displays a musical score for a piece titled "Courante". The score is written in a system of two staves, with the upper staff containing rhythmic notation and the lower staff containing tablature. The piece is in 3/4 time, as indicated by the "3" in the first measure. The key signature is one sharp (F#), which is La major. The score is divided into measures, with measure numbers 3, 7, 11, 14, and 18 marked on the left. The notation includes various rhythmic values (quarter, eighth, and sixteenth notes), rests, and accidentals. The tablature uses letters 'a', 'r', 'e', and 'g' to represent fret positions on the strings. Some measures include dynamic markings like 'f' and 'ff', and there are some handwritten annotations like 'g*' and '(1*)'. The score ends with a double bar line and repeat dots in measure 18.

1. Tablature originale : pas de prolongation de durée

21

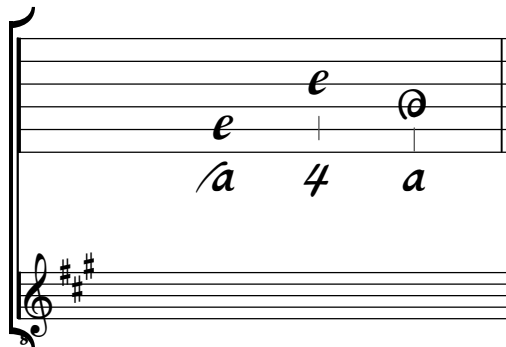
25

29

Tonalité : La majeur

Accord des basses du luth : 3 dièses

Scordature par octave



Accord des 11 chœurs du luth

