

Johann Michael Kühnel

autour de 1665 - après 1730

[Partie]

Sol majeur

Luth baroque à 11 chœurs

Manuscrit de Brno CZ-Bm371

Musée morave régional à Brno

Provenance : bibliothèque musicale de l'abbaye de Rajhrad 5.a.

(CZ-Bm Ms. sig. A.371)

Pages 95 - 98

Voir dans le manuscrit d'Haslemere GB-HAB2 :

... page 117, Courante Kühnel

... page 107 - 108, Gigue

- Le Luth Doré Editions, vol. 5/5 (LLDE0016) -



Allemande (Allemanda)

1. *r* *r* *m* *r* *m* *m* *r* *m* *r* *m*

2. *m* *m* *m* *m* *r* *m* *r* *m* *r* *m*

4. *m* *m* *m* *r* *m* *m* *m* *r* *m*

6. *r* *m* *m* *r* *m* *m* *m* *m* *m* *m* *r* *m*

8. 1. *r* *m* *r* *m* *r* 2. *r* *m* *r*

9. *r* *m* *r* *m* *r* *m* *m* *m* *r* *m* *r* *m*

11

f e e r e f r b r f a a a a a a a f a a a a a a a

a a r a a a a a a a a a a a a

4

13

r e r e e r r $\text{r e r e g e f h g h k h}$

a a r a r a a a

4

15

$\text{k k: k h h g e e g h h g}$ $\text{e e g e g e f e f e e f e}$

a a a a a a a a a

4

R

17

f f f f

a a a a

4

R

Courante (Couranta.)

3

4

8

12

16

20

25

30

34

Bourrée (Bouree)

Handwritten musical score for Bourrée (Bouree) in C major, common time. The score consists of five systems of music, each with a treble clef and a common time signature. The notes are handwritten and include various dynamics (f, ff, f.), articulations (accents, slurs), and fingerings (1-4). The piece begins with a C-clef and a common time signature. The first system contains four measures. The second system starts at measure 4 and contains four measures. The third system starts at measure 8 and contains four measures. The fourth system starts at measure 11 and contains three measures. The fifth system starts at measure 14 and contains three measures. The piece concludes with a final cadence in the fifth system.

20

6

R

23

6

R

Menuet (Men:)

3

5

9

13

17

21

25

Handwritten musical notation for measures 25-28. The top staff contains a melodic line with notes r, a, r, a, r, r, e, r, e, r, e, a, r. The bottom staff contains a bass line with notes r, a, a, r, a 4, a, a, r, e, a 4. There are fermatas over the first and last notes of the top staff in each measure.

29

Handwritten musical notation for measures 29-32. The top staff contains a melodic line with notes r, a, r, r, r, a, r, a, r, a, r, r, r, a, r. The bottom staff contains a bass line with notes r, a, a, r, a, a, r, a, r, a, r, a, r, a. The piece ends with a double bar line and a decorative flourish.

Gigue (Guigue)

1 2 3 4 5 6 7 8

6 8

4 5 6 7 8

4

8 9 10 11 12

12 13 14 15 16

15 16 17 18 19

20 21 22 23 24

24

24

25

26

27

R

28

28

29

30

31

32

32

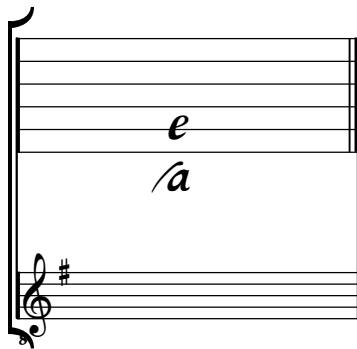
33

34

Tonalité : Sol majeur

Accord des basses du luth : 1 dièse

Scordature par octave



Accord des 11 chœurs du luth

