

[Compositeur anonyme]

Presto Angloise

Do majeur

Luth baroque à 11 chœurs

Manuscrit de Brno CZ-Bm371

Musée morave régional à Brno

Provenance : bibliothèque musicale de l'abbaye de Rajhrad 5.a.

(CZ-Bm Ms. sig. A.371)

Page 90



Presto Angloise

Musical score for "Presto Angloise" in C major, 4/4 time. The score consists of five systems of music, each with a treble and bass staff. The notation includes notes, rests, slurs, and dynamic markings like "f" and "h*". Fingerings are indicated by numbers 1-4. The piece starts with a common time signature "C" and a 4/4 time signature.

System 1 (Measures 1-4): Treble clef, common time signature "C". Measure 1: quarter note F (f). Measure 2: quarter notes H* (h*), quarter notes H* (h*), quarter notes H* (h*), quarter note F (f). Measure 3: quarter notes H (h), quarter notes F (f), quarter notes F (f), quarter note H (h). Measure 4: quarter notes G (g), quarter notes F (f), quarter notes G (g), quarter note F (f).

System 2 (Measures 5-8): Treble clef. Measure 5: quarter notes A (a), quarter notes G (g), quarter notes F (f), quarter note G (g). Measure 6: quarter note A (a), quarter notes G (g), quarter note F (f), quarter note G (g). Measure 7: quarter notes A (a), quarter notes G (g), quarter notes F (f), quarter note G (g). Measure 8: quarter notes A (a), quarter notes G (g), quarter notes F (f), quarter note G (g).

System 3 (Measures 9-12): Treble clef. Measure 9: quarter notes A (a), quarter notes G (g), quarter notes F (f), quarter note G (g). Measure 10: quarter notes H* (h*), quarter notes H (h), quarter notes H (h), quarter note F (f). Measure 11: quarter notes H (h), quarter notes F (f), quarter notes F (f), quarter note H (h). Measure 12: quarter notes G (g), quarter notes F (f), quarter notes G (g), quarter note F (f).

System 4 (Measures 13-16): Treble clef. Measure 13: quarter notes A (a), quarter notes G (g), quarter notes F (f), quarter note G (g). Measure 14: quarter notes A (a), quarter notes G (g), quarter note F (f), quarter note G (g). Measure 15: quarter notes A (a), quarter notes G (g), quarter notes F (f), quarter note G (g). Measure 16: quarter notes A (a), quarter notes G (g), quarter notes F (f), quarter note G (g).

System 5 (Measures 17-20): Treble clef. Measure 17: quarter notes H (h), quarter notes G (g), quarter notes H (h), quarter note G (g). Measure 18: quarter notes G (g), quarter notes H (h), quarter notes F (f), quarter note G (g). Measure 19: quarter notes E (e), quarter notes G (g), quarter notes A (a), quarter notes G (g), quarter notes A (a), quarter note G (g). Measure 20: quarter notes G (g), quarter notes A (a), quarter notes G (g), quarter notes A (a), quarter note G (g).

23

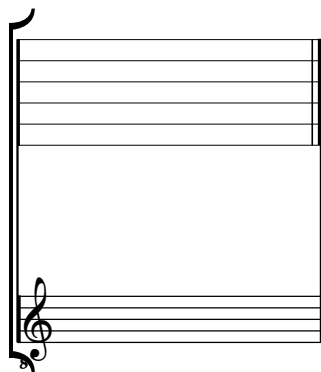
27

31

Tonalité : Do majeur

Accord ordinaire du luth

Scordature par octave



Accord des 11 chœurs du luth

