

[Compositeur anonyme]

Gigue (Guigue)

Ré majeur
Luth baroque à 11 chœurs

Manuscrit de Brno CZ-Bm371

Musée morave régional à Brno

Provenance : bibliothèque musicale de l'abbaye de Rajhrad 5.a.

(CZ-Bm Ms. sig. A.371)

Page 27



Gigue (Guigue)

The musical score for 'Gigue (Guigue)' is presented in a unique notation system. It consists of six systems of music, each with a five-line staff. Above the staff, rhythmic notation is used, including notes with stems and flags, and rests. Below the staff, the notes are represented by lowercase letters: 'e' for E, 'f' for F, 'g' for G, 'a' for A, and 'r' for B. The score begins with a common time signature (C) and a treble clef. The first system includes a dynamic marking of *f* and a *tr* (trill) symbol. The second system starts with a measure rest (3). The third system starts with a measure rest (5). The fourth system starts with a measure rest (7). The fifth system starts with a measure rest (8) and includes repeat signs at the beginning and end of the system. The sixth system starts with a measure rest (11) and includes a key signature change to one flat (Bb) and a dynamic marking of *f*. The piece concludes with a double bar line and repeat dots.

13

e a a a a e

15

(1*) (2*) (3*)

R

17

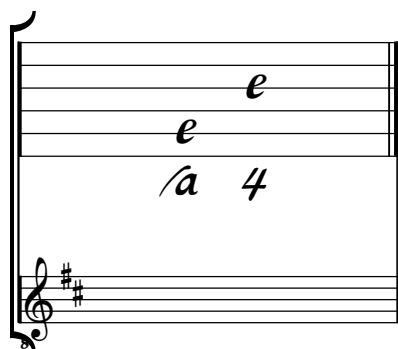
R

1. Tablature originale : deux triples-croches suivies d'une double-croche
2. Tablature originale : deux triples-croches suivies d'une double-croche
3. Tablature originale : deux triples-croches suivies d'une double-croche

Tonalité : Ré majeur

Accord des basses du luth : 2 dièses

Scordature par octave



Accord des 11 chœurs du luth

