

*[Compositeur anonyme]*

# Menuet (Menuete)

Ré majeur

*Luth baroque à 11 chœurs*

**Manuscrit de Brno CZ-Bm371**

*Musée morave régional à Brno*

*Provenance : bibliothèque musicale de l'abbaye de Rajhrad 5.a.*

(CZ-Bm Ms. sig. A.371)

*Page 26*



# Menuet (Menuete)

Handwritten musical score for a Minuet in G major. The score is written on a five-line staff with a treble clef and a 3/4 time signature. The music is in G major and consists of 24 measures. The notation includes various note values (quarter, eighth, and sixteenth notes), rests, and ornaments. The score is divided into two systems, each with a first and second ending. The first ending is marked with a '1.' and the second ending with a '2.'. The score concludes with a double bar line and a decorative flourish. The letter 'R' is written in a box below the staff at measures 18 and 24.

3

5

9

15

20

24

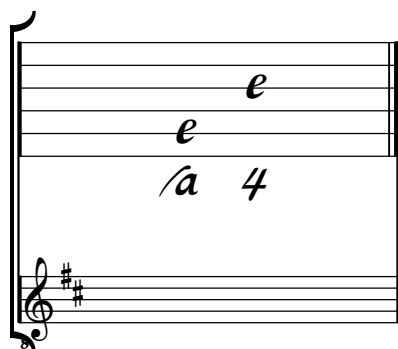
R

R

# Tonalité : Ré majeur

*Accord des basses du luth : 2 dièses*

*Scordature par octave*



*Accord des 11 chœurs du luth*



