

[Compositeur anonyme]

Menuet (Menuete)

Ré majeur

Luth baroque à 11 chœurs

Manuscrit de Brno CZ-Bm371

Musée morave régional à Brno

Provenance : bibliothèque musicale de l'abbaye de Rajhrad 5.a.

(CZ-Bm Ms. sig. A.371)

Page 25



Menuet (Menuete)

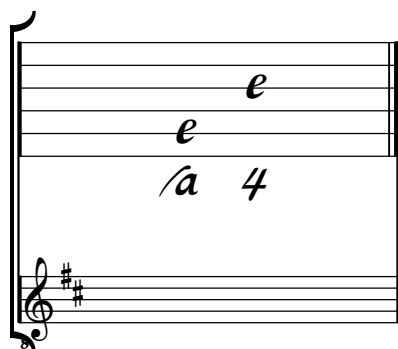
The image displays the original lute tablature for the Minuet in G major, BWV 289. The score is written on a six-line staff with rhythmic notation above and fret numbers below. The piece is in 3/4 time and consists of 24 measures. The tablature uses letters 'a' (1st fret), 'e' (2nd fret), 'r' (3rd fret), and 'x' (natural) to indicate fingerings. A '3' at the beginning of the first measure indicates a triplet. A '4' appears below the staff in the 7th measure, likely indicating a change in the number of strings used. A repeat sign with first and second endings is used in the 11th measure. A '1*' is written below the staff in the 11th measure, possibly indicating a first ending. A '18' is written below the staff in the 18th measure, possibly indicating a first ending. A '23' is written below the staff in the 23rd measure, possibly indicating a first ending. The piece concludes with a large decorative flourish.

1. Tablature originale : blanche pointée

Tonalité : Ré majeur

Accord des basses du luth : 2 dièses

Scordature par octave



Accord des 11 chœurs du luth

Musical notation for the 11-voice lute chord. It consists of a four-line staff with a brace on the left. The notes are: 'a' on the first line, 'a' on the second line, 'a' on the third line, 'a' on the fourth line, 'a' on the fifth line, 'a' on the sixth line, and 'a a a a 4' on the seventh line. Below the staff is a treble clef with two sharps (F# and C#).

