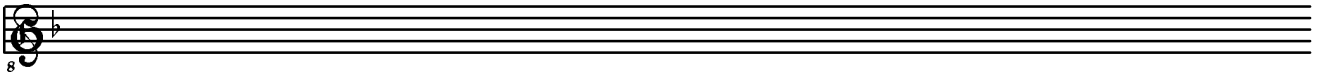


Johann Gumprecht  
(1610-1697)

# Sarabandes

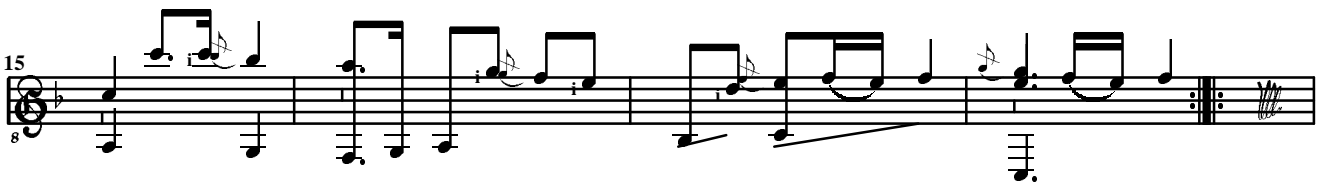
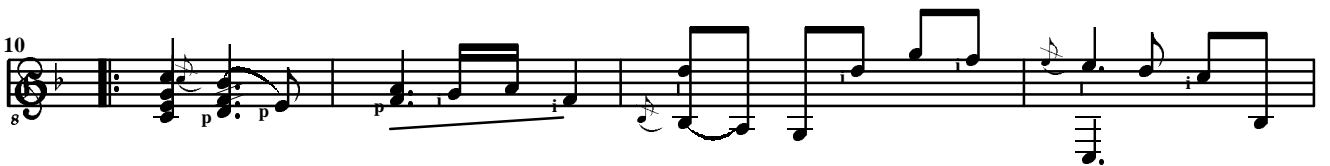
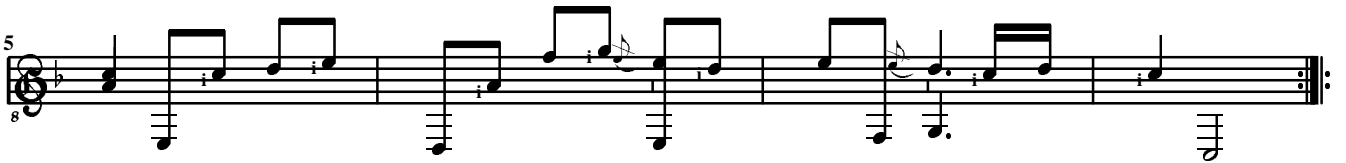
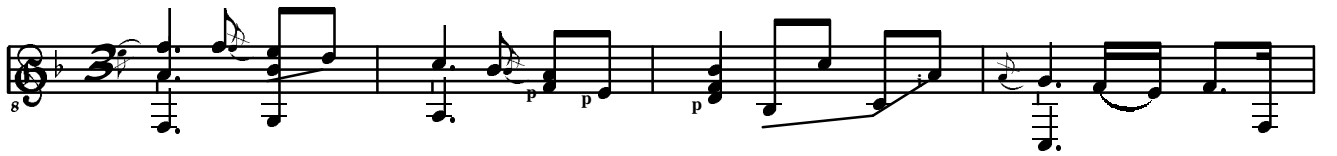
# Les sarabandes

- 1 -
- 2 - (1) Sarabande
- 3 - (2) Sarabande
- 4 - (3) Sarabande
- 5 - (4) Sarabande
- 6 - (5) Sarabande
- 7 - (6) Sarabande
- 8 - (7) Sarabande
- 9 - (8) Sarabande
- 10 - (9) Sarabande
- 11 - (10) Sarabande
- 12 - (11) Sarabande
- 13 - (12) Sarabande
- 14 - (13) Sarabande
- 15 - (14) Sarabande



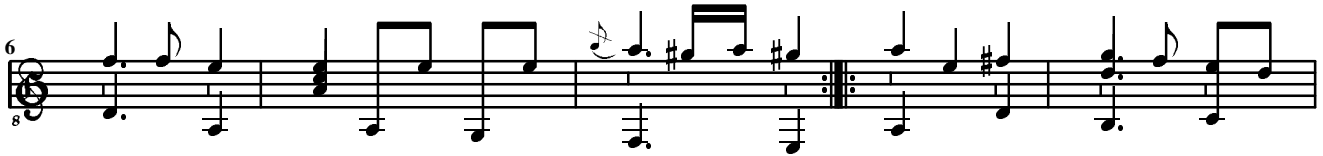
# (1) Sarabande

Paris Viée, feuillets 25'-26  
Fa majeur



# (2) Sarabande

Rostock XVII 54, feuillet 6  
Ré mineur



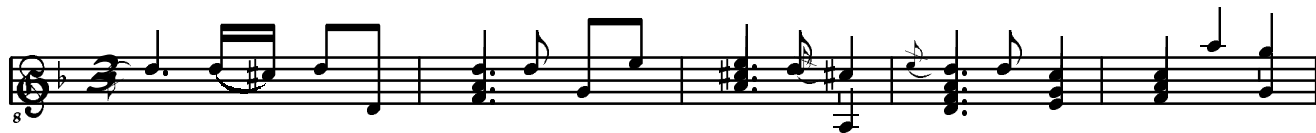
# (3) Sarabande

Rostock XVII 54, feuillet 6  
Ré mineur



# (4) Sarabande

Rostock XVII 54, feuillets 12-13  
Ré mineur



Double



# (5) Sarabande

Londres Sloane 2923, feuillet 106  
Ré mineur

8

5

9

14

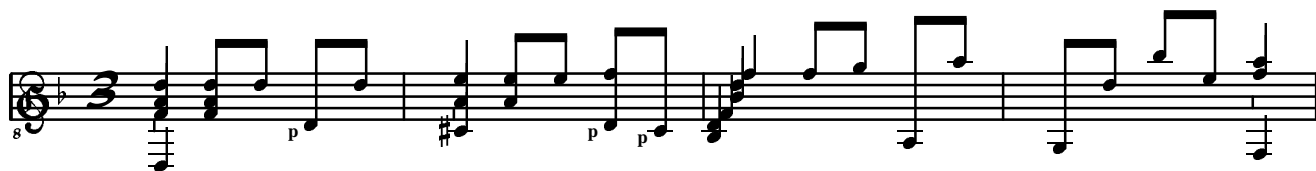
R

18



# (6) Sarabande

Leipzig II 6 24, feuillet 233  
Ré mineur

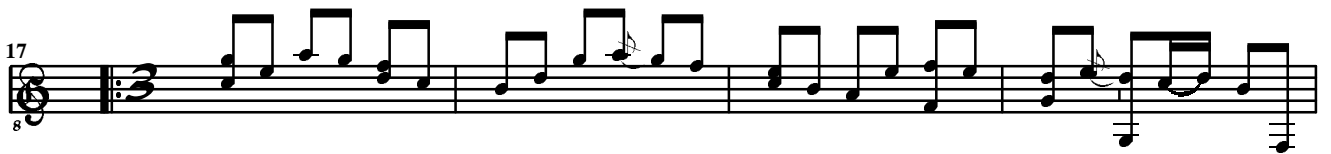


# (7) Sarabande

Rostock XVII 54, feuillets 306-30  
Do majeur



Double




26



31



34



# (8) Sarabande

Paris Keller, feuillets 114 - 115  
Do majeur

8

6

11

15

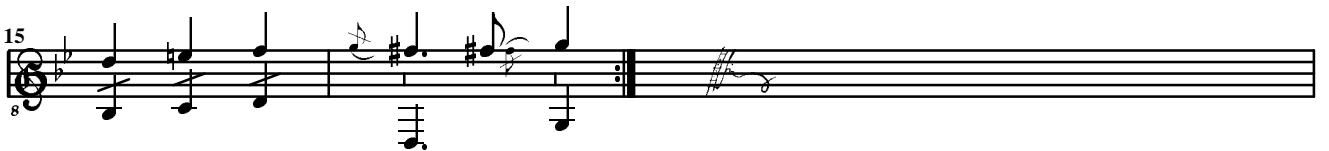
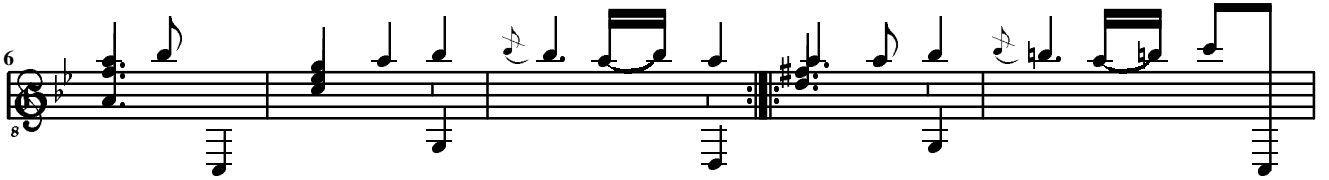
# (9) Sarabande

Darmstadt Roth, feuillets 26'-27  
Sol mineur



# (10) Sarabande

Rostock XVII 54, feuillet 111  
Sol mineur



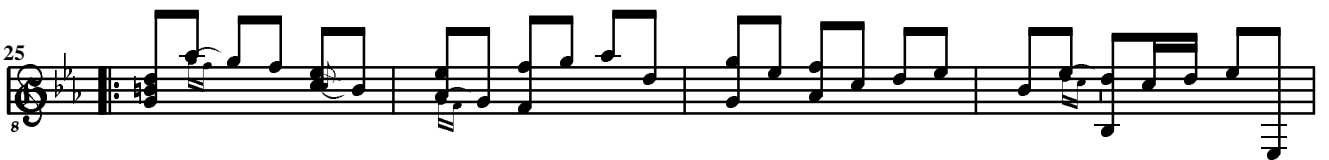
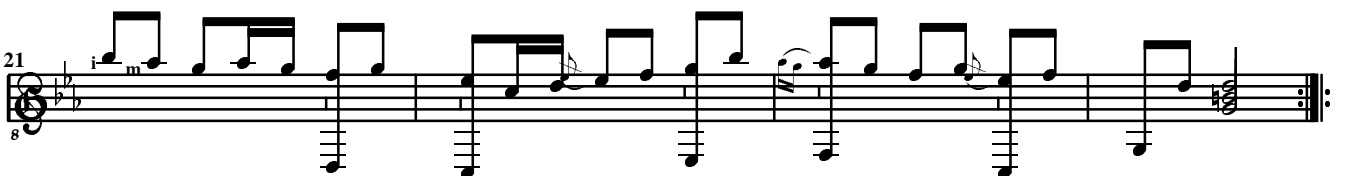
# (11) Sarabande

Rostock XVII 54, feuillet 122  
Sol mineur



# (12) Sarabande

Darmstadt Roth, feuillets 58' - 61  
Do mineur





# (13) Sarabande

Darmstadt Roth, feuillets 83' - 84  
Si bémol majeur

Measures 1-5 of the Sarabande. The music is in 3/4 time and Si bémol majeur. The right hand features a melodic line with eighth and sixteenth notes, while the left hand provides a steady bass accompaniment with eighth notes.

Measures 6-11 of the Sarabande. This section includes a repeat sign in measure 10, indicating a first ending. The melodic and bass lines continue with similar rhythmic patterns.

Measures 12-17 of the Sarabande. The piece concludes with a final cadence in measure 17, marked with a double bar line and repeat dots.

Measure 18 of the Sarabande. This measure contains a single chord in the left hand, with the right hand staff remaining empty.

Accord

# (14) Sarabande

Paris Keller, feuillet 96  
Sol majeur

