

Sonata

DOMENICO SCARLATTI

K.1 L.366

Allegro

Measures 1-2 of the Sonata. The music is in G minor, 2/4 time. The right hand features a melodic line with eighth-note patterns and a trill on the final note of the first measure. The left hand provides a rhythmic accompaniment with eighth-note chords.

Measures 3-5 of the Sonata. The right hand continues the melodic line with eighth-note patterns and trills. The left hand maintains the rhythmic accompaniment with eighth-note chords.

Measures 6-7 of the Sonata. The right hand features a melodic line with eighth-note patterns and trills. The left hand provides a rhythmic accompaniment with eighth-note chords.

Measures 8-9 of the Sonata. The right hand continues the melodic line with eighth-note patterns and trills. The left hand maintains the rhythmic accompaniment with eighth-note chords.

Measures 10-11 of the Sonata. The right hand features a melodic line with eighth-note patterns and trills. The left hand provides a rhythmic accompaniment with eighth-note chords.

Measures 12-13 of the Sonata. The right hand continues the melodic line with eighth-note patterns and trills. The left hand maintains the rhythmic accompaniment with eighth-note chords.

Measures 14-15 of the Sonata. The right hand features a melodic line with eighth-note patterns and trills. The left hand provides a rhythmic accompaniment with eighth-note chords.

16

Musical notation for measures 16 and 17. The system consists of a treble clef staff and a bass clef staff. The key signature has one flat (B-flat). Measure 16 features a complex rhythmic pattern in the treble with eighth and sixteenth notes, and a bass line with quarter notes. Measure 17 continues the treble pattern with a sharp sign (#) above a note, and the bass line has a sharp sign (#) above a note.

18

Musical notation for measures 18 and 19. The system consists of a treble clef staff and a bass clef staff. The key signature has one flat (B-flat). Measure 18 has a treble staff with a wavy line above a note and a bass line with eighth notes. Measure 19 has a treble staff with a wavy line above a note and a bass line with eighth notes.

20

Musical notation for measures 20 and 21. The system consists of a treble clef staff and a bass clef staff. The key signature has one flat (B-flat). Measure 20 has a treble staff with eighth notes and a sharp sign (#) above a note, and a bass line with quarter notes. Measure 21 has a treble staff with eighth notes and a sharp sign (#) above a note, and a bass line with quarter notes.

22

Musical notation for measures 22 and 23. The system consists of a treble clef staff and a bass clef staff. The key signature has one flat (B-flat). Measure 22 has a treble staff with a sharp sign (#) above a note, eighth notes, and a wavy line above a note, and a bass line with quarter notes. Measure 23 has a treble staff with eighth notes and a wavy line above a note, and a bass line with quarter notes.

24

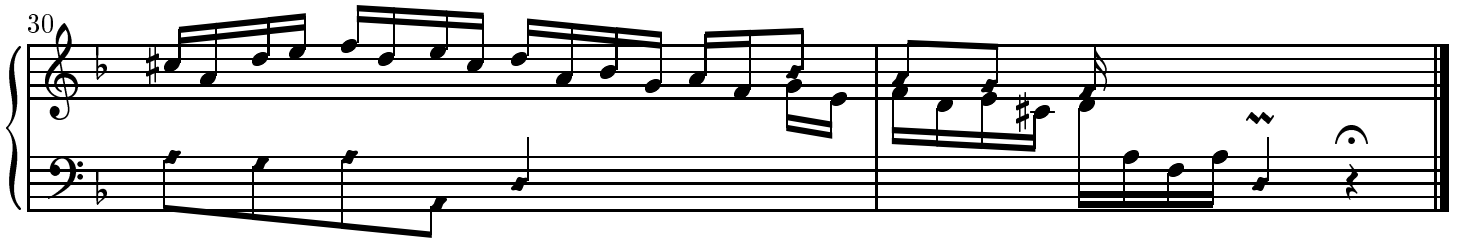
Musical notation for measures 24 and 25. The system consists of a treble clef staff and a bass clef staff. The key signature has one flat (B-flat). Measure 24 has a treble staff with eighth notes, a wavy line above a note, and a slur over the final two notes, and a bass line with quarter notes. Measure 25 has a treble staff with eighth notes, a wavy line above a note, and a slur over the final two notes, and a bass line with quarter notes.

26

Musical notation for measures 26 and 27. The system consists of a treble clef staff and a bass clef staff. The key signature has one flat (B-flat). Measure 26 has a treble staff with eighth notes, a sharp sign (#) above a note, and a flat sign (b) below a note, and a bass line with quarter notes. Measure 27 has a treble staff with eighth notes and a flat sign (b) below a note, and a bass line with quarter notes.

28

Musical notation for measures 28, 29, 30, and 31. The system consists of a treble clef staff and a bass clef staff. The key signature has one flat (B-flat). Measure 28 has a treble staff with eighth notes and a sharp sign (#) above a note, and a bass line with quarter notes. Measure 29 has a treble staff with eighth notes and a sharp sign (#) above a note, and a bass line with quarter notes. Measure 30 has a treble staff with eighth notes and a sharp sign (#) above a note, and a bass line with quarter notes. Measure 31 has a treble staff with eighth notes and a sharp sign (#) above a note, and a bass line with quarter notes.



In bar 12 beat 2, the trilled 16th g was probably added later, as there is also a dot on the initial 8th f.

Copyright ©John Sankey 1999. Typeset by GNU LilyPond 1.2.16. Released under the GNU General Public License. You are free to copy and distribute this document as much as you wish, in any format, as long as this notice appears on each copy.