

Silvius Leopold Weiss

(1687 - 16 oct. 1750)

Parthia [32]

a Liuto Solo

Sign. Sylvio Leopold Weiss 1739

Allemande, Courante, Bourrée (Bourée),
Sarabande, Menuet 1, Menuet 2, Gigue

WeissSW32.1 à 6 WeissSW16*

Fa majeur

Manuscrit de Grüssau PL–WRu2002

Wroclaw, Bibliothèque universitaire

PL-WRu 60019 Muz. (olim Mf. 2002)

Pages 91 à 98

Voir dans le manuscrit de Londres GB-Lbl30387 :

... pages 311 à 317, la Sonate 32

*... page 242, le Menuet 16**

Voir dans le manuscrit de Dresde D-Dl2841, volume 1 :

... pages 6 à 10, la Sonate N° 32

... page 5, la Gigue de la Sonate N° 33.

[Le Luth Doré Urtext Editions]



Parthia [32] a Liuto Solo

Sign. Sylvio Leopold Weiss 1739

WeissSW32.1

Allemande

4

7

10

13

16

5 a a a 6 a 6

19

a a a a a a a a

22

a 6 a 4 5 a a a a

(1*)

25

a 4 a 6 4 5 5 5

28

5 6 5 4 a 4 a

1. Original : indication rythmique de croche jusqu'à la fin de la mesure

Courante

3

5

10

16

22

28

33

(1*)

(2*)

1. Original : basse absente

2. Original : Fa dièse (e sur le 5e chœur)

40

(1*)

47

54

60

(2*)

66

(3*)

72

78

(4*)

1. Original : Do (d sur le 6e chœur)
2. Original : basse absente
3. Original : aussi Fa (a sur la chanterelle)
4. Original : basse absente

Bourrée (Bourée)

4

9

13

18

21

(1*)

(2*)

1. Original : cette basse est sous la note suivante.

2. Original : pas d'indication rythmique

26

30

34

38

42

47

- 1. Original : Si bémol (f sur le 4e chœur)
- 2. Original : La (a sur le 3e chœur)
- 3. Original : Fa (a sur la chanterelle)

Sarabande

5

10

13

16

19

1. Original : présence d'une basse Fa dièse (e sur le 5e chœur)

23

[5] 4 (1*) (2*) (3*)

27

4 5 4 (2*) (2*) 4 (2*) (2*)

31

a a a a a a a a

34

a a (2*) a a e 4

38

5 a a (2*) a

41

a a 5 6 (2*)

- 1. Original : basse absente
- 2. Original : aucune indication rythmique dans cette mesure
- 3. Original : Fa (d sur le canto)
- 4. Original : indication rythmique de double-croche et note suivante manquante

Menuet 1

3

(1*)

6

11

4

17

4

22

4

27

(2*)

Detailed description of the musical score: The score is for a Minuet in F major, BWV 289, by Johann Sebastian Bach. It is in 3/4 time. The notation is presented in five systems, each with a treble clef and a single staff. The notes are written in a shorthand style with letters (a, b, c, d, e, f, g) and rhythmic flags. Fingerings are indicated by numbers 1-5. The first system starts with a 3/4 time signature. The second system begins at measure 6. The third system begins at measure 11 and includes a measure with a '4' below it. The fourth system begins at measure 17 and includes a measure with a '4' below it. The fifth system begins at measure 22 and includes a measure with a '4' below it. The sixth system begins at measure 27 and includes a measure with a '4' below it. There are two asterisks in the score: (1*) under the first system and (2*) under the sixth system.

1. Original : basse absente

2. Cette mesure n'est pas présente dans les autres manuscrits.

32

Handwritten annotations: *a a*, *a a*, *a a a a*

37

Handwritten annotations: *a*, *4*, *a*, *5*

42

Handwritten annotations: *4*, *a a*, *a*, *a a*, *a*

47

Handwritten annotations: *a [a] (1*)*, *a*, *a*, *4*, *4 a*

52

Handwritten annotations: *4*, *a*, *a*, *a*, *a*

57

Handwritten annotations: *4 a*, *a*, *a*, *a 4*, *a*

1. Original : basse absente

Menuet 2

Handwritten musical score for Menuet 2, featuring a treble clef, a 3/4 time signature, and various musical notations including notes, rests, and dynamic markings.

The score is divided into systems, with measures numbered 3, 6, 11, 16, 21, and 27. The notation includes notes, rests, and dynamic markings such as *f*, *h*, and *a*. The piece concludes with a double bar line and repeat dots.

System 1 (Measures 3-5):
 Measure 3: *f* *h* *h* *f* *h* *a*
 Measure 4: *f* *h*
 Measure 5: *a* *a* *a* *a* *a* *b*

System 2 (Measures 6-10):
 Measure 6: *a*
 Measure 7: *a* *r* *a* *b*
 Measure 8: *a* *a* *b* *a* *r*
 Measure 9: *a* *a* *a* *r* *a* *a*
 Measure 10: *r* *a* *a* *r* *a* *r*

System 3 (Measures 11-15):
 Measure 11: *r* *a*
 Measure 12: *r* *a* *a* *r* *a* *r*
 Measure 13: *a*
 Measure 14: *r* *r*
 Measure 15: *a* *a* *a*

System 4 (Measures 16-20):
 Measure 16: *r* *a* *r* *a* *r* *a*
 Measure 17: *a* *r* *r*
 Measure 18: *r* *a* *r* *a* *r* *a*
 Measure 19: *a* *a* *b*
 Measure 20: *a*

System 5 (Measures 21-26):
 Measure 21: *a* *r* *a* *e*
 Measure 22: *a* *f* *h* *f* *f*
 Measure 23: *h* *k* *a*
 Measure 24: *g* *h*
 Measure 25: *a* *f*
 Measure 26: *b* *a* *r* *a*

System 6 (Measures 27-31):
 Measure 27: *b* *r*
 Measure 28: *a* *r* *a*
 Measure 29: *b* *a* *a* *r* *a*
 Measure 30: *e* *a* *e* *r* *e* *a*
 Measure 31: *e* *r*

32

37

42

(1*)

47

[Menuet 1 Da Capo]^(2*)

1. Original : Do dièse (e sur le 3e chœur)

2. Original : indication absente

Gigue

6

13

20

26

(1*) (2*)

32

(3*)

37

44

(4*)

Detailed description of the musical score: The score consists of six systems of musical notation. Each system is written on a grand staff (treble and bass clefs). The notation includes various note values (quarter, eighth, sixteenth notes), rests, and ornaments. Performance instructions are provided below the staves: (1*) and (2*) are placed below the first system; (3*) is placed below the second system; (4*) is placed below the sixth system. The score is divided into measures, with some measures containing multiple notes or ornaments. The final measure of the sixth system has a double bar line and repeat dots.

1. Original : Mi et Ré (c et a sur le 5e chœur)
2. Original : l'ornement est une appoggiature montante.
3. Original : basse absente
4. Original : La (a sur le 6e chœur)

50

57

63

69

75

81

87

93

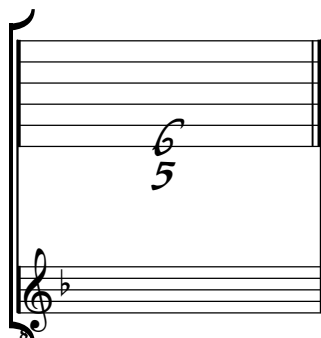
Finis Parthiæ

1. Original : présence d'un Si (c sur le 3e chœur) qui avait peut-être été biffé
 2. Original : basse absente
 3. Original : Do (d sur le 3e chœur)
 4. Original : Si bémol (f sur la chanterelle)

Tonalité : Fa majeur

Accord du luth : 1 bémol

Scordature par octave



Accord des 13 chœurs du luth

