

Silvius Leopold Weiss

(1687 - 16 oct. 1750)

Præludium

WeissSW63*

Ré mineur

Manuscrit de Grüssau PL-WRu2002

Wroclaw, Bibliothèque universitaire

PL-WRu 60019 Muz. (olim Mf. 2002)

Page 75



Præludium (Prælud:)

2. 2. 2.

4 2.

7 2.

10 2.

13 2.

16 2. 2.

19

(1*)

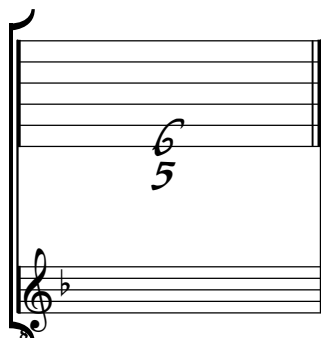
The image shows a handwritten musical score for a Præludium in G minor. The score is written on five-line staves with a common time signature (C). The notation includes various rhythmic values and articulations such as accents, slurs, and dynamic markings (f, f²). The score is divided into measures, with measure numbers 4, 7, 10, 13, 16, and 19 indicated. The notation is dense with many notes, often with fingerings (1-5) and slurs. There are several first and second endings marked with '2.'. The score ends with a measure marked '(1*)'.

1. Original : pas d'indication rythmique

Tonalité : Ré mineur

Accord du luth : 1 bémol

Scordature par octave



Accord des 13 chœurs du luth

