

[David Kellner]

(1670 - 6 April 1748)

Phantasia

Fa majeur

Manuscrit de Grüssau PL-Wu2002

Wroclaw, Bibliothèque Universitaire

PL-WRu 60019 Muz. (olim Mf. 2002)

Page 32

*Cette Phantasia figure dans le recueil manuscrit édité par l'auteur :
David Kellners XVI auserlesene Lauten-Stücke, pages N.8 et N.9
(DK_3)*

*Voir le manuscrit de Grüssau PL-Wu2008, pages 12 et 13, Phantasia
(PLWu2008_8)*

*Voir le manuscrit de Grüssau PL-Wu2009, pages 12 et 13, Phantasia
(PLWu2009_8)*



Phantasia

The image shows a musical score for a piece titled "Phantasia". The score is written on a grand staff (treble and bass clefs) and consists of five systems of five measures each. The tempo is marked "allegro".

System 1 (Measures 1-5): Measure 1 starts with a 3/4 time signature. The notes are: Treble clef: G4, A4, B4, A4; Bass clef: F3, A2, B2. Measure 2: Treble clef: C5, B4, A4, G4; Bass clef: A2, C3, E3. Measure 3: Treble clef: G4, A4, B4, A4; Bass clef: F3, A2, B2. Measure 4: Treble clef: C5, B4, A4, G4; Bass clef: A2, C3, E3. Measure 5: Treble clef: G4, A4, B4, A4; Bass clef: F3, A2, B2.

System 2 (Measures 6-10): Measure 6: Treble clef: G4, A4, B4, A4; Bass clef: F3, A2, B2. Measure 7: Treble clef: C5, B4, A4, G4; Bass clef: A2, C3, E3. Measure 8: Treble clef: G4, A4, B4, A4; Bass clef: F3, A2, B2. Measure 9: Treble clef: C5, B4, A4, G4; Bass clef: A2, C3, E3. Measure 10: Treble clef: G4, A4, B4, A4; Bass clef: F3, A2, B2.

System 3 (Measures 11-15): Measure 11: Treble clef: G4, A4, B4, A4; Bass clef: F3, A2, B2. Measure 12: Treble clef: C5, B4, A4, G4; Bass clef: A2, C3, E3. Measure 13: Treble clef: G4, A4, B4, A4; Bass clef: F3, A2, B2. Measure 14: Treble clef: C5, B4, A4, G4; Bass clef: A2, C3, E3. Measure 15: Treble clef: G4, A4, B4, A4; Bass clef: F3, A2, B2.

System 4 (Measures 16-20): Measure 16: Treble clef: G4, A4, B4, A4; Bass clef: F3, A2, B2. Measure 17: Treble clef: C5, B4, A4, G4; Bass clef: A2, C3, E3. Measure 18: Treble clef: G4, A4, B4, A4; Bass clef: F3, A2, B2. Measure 19: Treble clef: C5, B4, A4, G4; Bass clef: A2, C3, E3. Measure 20: Treble clef: G4, A4, B4, A4; Bass clef: F3, A2, B2.

System 5 (Measures 21-25): Measure 21: Treble clef: G4, A4, B4, A4; Bass clef: F3, A2, B2. Measure 22: Treble clef: C5, B4, A4, G4; Bass clef: A2, C3, E3. Measure 23: Treble clef: G4, A4, B4, A4; Bass clef: F3, A2, B2. Measure 24: Treble clef: C5, B4, A4, G4; Bass clef: A2, C3, E3. Measure 25: Treble clef: G4, A4, B4, A4; Bass clef: F3, A2, B2.

30 *ſ* *ſ* *ſ* *ſ* *ſ*

(1*)

35 *ſ* *ſ* *ſ* *ſ* *ſ*

40 *ſ* *ſ* *d.* *ſ* *d.*

45 *ſ* *ſ* *ſ* *ſ* *ſ*

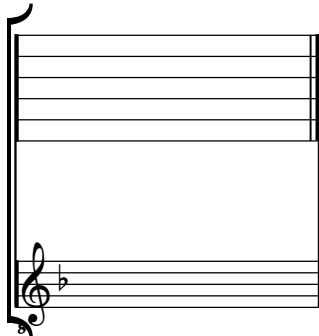
50 *ſ* *ſ* *ſ* *ſ* *d.*

1. Mesure absente de l'original

Tonalité : Fa majeur

Accord ordinaire du luth

Scordature par octave



Accord des 11 chœurs du luth

