

Giuseppe Borsilli (Joseph Porsile)
(1672 - 1750)

[Partie]

Allemande de G. Borsilli, Courante, Sarabande,
Menuet, Gigue

Sol mineur

Manuscrits de Vienne A-Wn1078

Vienne, Bibliothèque nationale autrichienne, collection de musique

A-Wn ms. 1078

Folios 30v - 34r

Voir le manuscrit de Varsovie PL-Wu2003, folios 90r. à 91v. : Partie.
[PLWu2003_52]



[Partie]

Allemande de Borsilli

The musical score for the Allemande de Borsilli is presented in a system of five staves. Above each staff is a line of rhythmic notation consisting of various note values and rests. The musical notation below each staff includes notes, rests, and dynamic markings such as *a*, *alla*, *f*, and *f^x*. The score begins with a common time signature 'C' and a key signature of one flat. The piece is divided into measures, with some measures containing repeat signs. The notation is a mix of standard musical symbols and shorthand symbols, likely representing a specific notation system for this piece.

13

15

17

19

21

23

25

(1*)

1. Original : Fa-dièse (b sur le 4e chœur)

Courante

Musical score for Courante, featuring a single melodic line on a five-line staff. The score is divided into measures, with measure numbers 4, 8, 12, 16, and 20 indicated on the left. The notation includes notes with stems, beams, and various rhythmic markings such as '3', '4', and '6'. There are also some specific markings like '[r]' and '(1*)'.

1. Original : Si-bécarre (c sur le 3e chœur)

24

4 a r 4 a

29

4 a 4 a

33

4 a (*) a

37

4 a 4 a

41

4 a 4 R

45

4 a

1. Original : Do (d sur le 3e chœur)

Sarabande

3

a a a a a a a a a

4

a a a a a a a a a

8

a a a a a a a a a

11

a a a a a a a a a

15

a a a a a a a a a

19

a a a a a a a a a

R

23

4 a a a a a a a

27

4 a a a a a

Menuet

3

5

9

13

17

21

25

a a b a a | b e f e f | a b a a a | b a b a b a

m 4 a a a

29

a b a r | a a b | a a e | a b a

33

a b b b | a b a a | r e r b | a a b a

a a m m

37

a b a a | a a | a b a a | a a | a f a a

a a a b m

R

42

a a a | a a r a | r r a

a m

Gigue

1 2 3 4

4 5 6 7

8 9 10 11

12 13 14 15

16 17 18 19

20 21 22 23

24

Handwritten musical notation for measures 24-27. Measure 24: Treble clef, notes G, A, B, A, G. Bass clef, note A. Measure 25: Treble clef, notes A, B, A, G, F, A. Bass clef, notes B, A. Measure 26: Treble clef, notes F, A, B, A, G. Bass clef, note A. Measure 27: Treble clef, notes G, A, B, A, G. Bass clef, notes A.

28

Handwritten musical notation for measures 28-31. Measure 28: Treble clef, notes G, A, B, A, G. Bass clef, notes G, A, B, A, G. Measure 29: Treble clef, notes G, A, B, A, G. Bass clef, notes G, A, B, A, G. Measure 30: Treble clef, notes G, A, B, A, G. Bass clef, notes G, A, B, A, G. Measure 31: Treble clef, notes G, A, B, A, G. Bass clef, notes G, A, B, A, G.

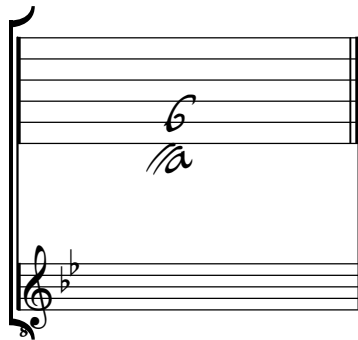
32

Handwritten musical notation for measures 32-33. Measure 32: Treble clef, notes G, A, B, A, G. Bass clef, notes A, A. Measure 33: Treble clef, notes G, A, B. Bass clef, notes A, A. Ends with a decorative flourish.

Tonalité : Sol mineur

Accord des basses du luth : 1 bémol

Scordature par octave



Accord des 11 chœurs du luth

