

Silvius Leopold Weiss

(1687 - 16 oct. 1750)

[Partie 68]

WeissSW68.1-3

Fantaisie (Phantasie) de M^r: Weis,
Allemande, Gigue (Guige)

Fa-dièse mineur

Manuscrits de Vienne A-Wn18761

Vienne, Bibliothèque nationale autrichienne, Collection musicale

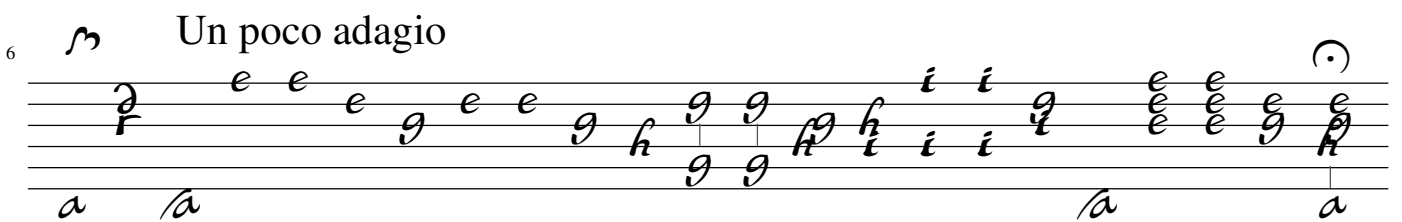
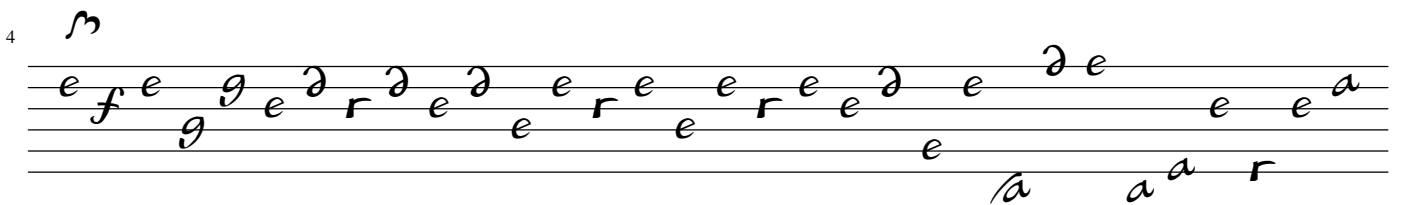
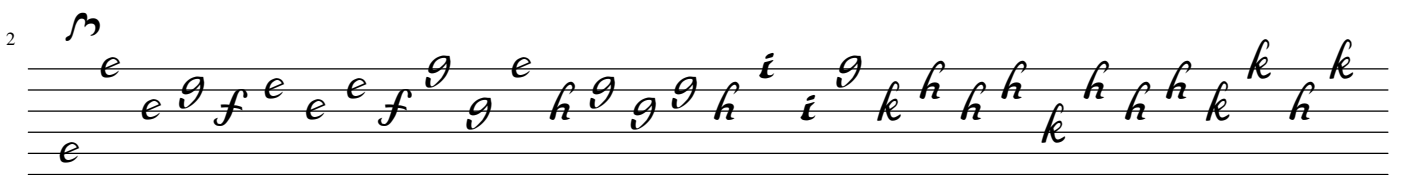
A-Wn ms. 18761

Folios 28v. - 31r.



Partie 68

Fantaisie (Phantasie) de M^r: Weis




7 *m*
h i h g h k i g i i h e f g f e f h f g g e g g
i i g i i

8 *m*
e r a e a r a a e e e a a b a a e r a r e e
e r e a a r e e e r a r e e

9 *m*
a a r a e a a r e e r b g h g i i g g
a 4

10 *m*
e a e e e a e a e r e a b b a a e e g g h i i g
4 4

11 *m*
e e a a r e a e e e f e g f e e
h a r e a a f e g f e e
4 4 a a



Allemande

1

2

4

6

8

10

12

i *m* *n* *m* *n* *m* *n* *m* *n* *m* *n* *m* *n* *m*

e *g* *g* *a* *e* *f* *r* *e* *e* *a* *r* *a* *e* *r* *e* *e* *r* *b* *e* *a* *e*

a *a* *a* *a* *a* *a* 4

14

e *a* *e* *e* *e*

e *a* *e* *e* *e*

4 *a*

(1*)

1. Original: rhythm sign not found

Gigue (Guige)

1. Original: D (a on course 5)

5. Original: dotted group not found

11. Original: bass not found

17. Original: dotted group not found

23. Original: dotted group not found

29. Original: bass not found

- 1. Original: D (a on course 5)
- 2. Original: dotted group not found
- 3. Original: dotted group not found
- 4. Original: bass not found

35

(1*)

41

47

4

53

1. Original: bass one octave higher

Tonalité : Fa-dièse mineur
Accord des basses du luth : 3 dièses

Scordature par octave

Musical notation for Scordature par octave. It shows a lute staff with a treble clef and a key signature of three sharps (F#, C#, G#). The staff contains three notes: 'e' on the first line, 'e' on the second line, and 'a' on the second space. A circled 'a' is written above the second line. Below the staff, the notes are labeled 'a', '4', and 'a'.

Accord des 11 chœurs du luth

Musical notation for Accord des 11 chœurs du luth. It shows a lute staff with a treble clef and a key signature of three sharps (F#, C#, G#). The staff contains a sequence of notes: 'a', 'a', 'a', 'a', 'a', 'a', 'a', 'a', 'a', 'a', 'a'. Below the staff, the notes are labeled 'a', 'a', 'a', 'a', 'a', 'a', 'a', 'a', 'a', 'a', '4'.