

Johann Michael Kühnel

(1665 - after 1725)

4. Concerto

Del Sigr: Weis

Concerto, Allegro

Ré majeur

Manuscrits de Vienne A-Wn18829

Vienne, Bibliothèque nationale autrichienne, Collection de musique

A-Wn ms. 18829

Folios 32v. - 36r.



4. Concerto Del Sig^r: Weis^(1*)

Handwritten musical score for a lute, consisting of six systems of two staves each. The notation includes various rhythmic values (minims, crotchets, quavers), dynamics (f, ff), and articulation (accents, slurs). The piece is in common time (C) and features a variety of rhythmic patterns and melodic lines.

System 1: *M*
 Staff 1: *a a a a r a r a e a e a r r r*
 Staff 2: *a 4 a a*

System 2: *f* *M* *M*
 Staff 1: *e e f e f r e e e e r r e e e e a a r r r r r r r g*
 Staff 2: *a a a [a] a a*
 (2*)

System 3: *M* *M*
 Staff 1: *g f f r r e e e e r r e e e e e e e e r e r e*
 Staff 2: *a a a a a a a a*

System 4: *M* *M*
 Staff 1: *e e r e e e r e a r a e e e e r r r a a a r e r r r e r*
 Staff 2: *a a a a r a a a a*

System 5: *M* *f* *M* *d.* *f*
 Staff 1: *r e r r r r e a r a r e a a a a a*
 Staff 2: *a a a a a a a a*

System 6: *f* *M* *f* *M* *M* *M*
 Staff 1: *a a e r e r a e e e e a a r r r r r r r g*
 Staff 2: *a a a a a a a a*

System 7: *M* *M*
 Staff 1: *g f f r r e e e e r r e e e e e e e e r e r e*
 Staff 2: *a a a a a a a a*

1. This piece is usually ascribed to Johann Michael Kühnel
 2. Original: bass E (a on course 9)

14

16

18

21

23

(1*)

25

27

(2*)

.../...

1. Original: E (h on course 3)
2. Original: only three triplets

29

(1*)

30

32

34

37

39

41

(2*) (3*)

- 1. Original: only three triplets
- 2. Original: bass not found
- 3. Original: bass not found

43

44

46

48

Adagio

50

52

54

.../...

1. Original: G (a on course 7)

Allegro

57

60

63

67

70

73

76

1. In this measure, all chords are identical in the original

80

83

86

90

94

98

102

.../...

107

111

115

119

(1*)

123

127

130

1. Two D (f on course 3) in the original tablature

133

4 5 6

136

6 6 6

139

(1*)

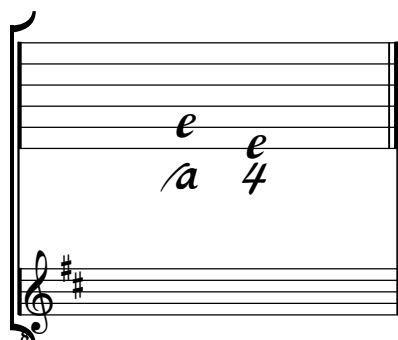
142

1. Original: F (a on course 8)

Tonalité : Ré majeur

Accord des basses du luth : 2 dièses

Scordature par octave



Accord des 11 chœurs du luth

