

Silvius Leopold Weiss

(1687 - 16 oct. 1750)

[Partie 16]

Partita 3 mons: Weis

WeissSW16.1 à 5 - WeissSW12.7

Allemande, Echo vivace, Paysanne (Paisanne),
Sarabande (Sarab:), Gigue, Menuet

La majeur

Manuscrits de Vienne A-Wn18829

Vienne, Bibliothèque nationale autrichienne, collection de musique

A-Wn ms. 18829

Folios 13v. - 21r.

*Voir dans le manuscrit de Londres GB-Lbl30387, folios 74v à 78r : Sonata 16
[Le Luth Doré Urtext Edition]*

*Voir dans le manuscrit de Dresde D-Dl2841, volume 3, pages 152 à 158 :
Sonata N° 16 [Le Luth Doré Urtext Edition]*

*Voir le manuscrit de Vienne A-Wn1078, pages 89 et 90 : Menuet : Mad:
la grondeuse. [V1078_14]*

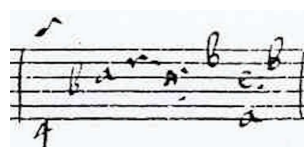
*Voir dans le manuscrit d'Haslemere GB-HAB2,
...page 29 : Vivace
... pages 141 : Paisane [Le Luth Doré Urtext Edition]*



Partita 3 Mons. Weis

Allemande

1. Original: C-sharp (e on course 3)
2. Wrong measure, replaced with that of the Dresden manuscript. Here the fac-simile ==>=>
3. Original: two notes one course below



30

30

34

34

38

38

42

42

46

46

50

50

53

53

1. Original: note not found
 2. Original: two beats without rhythmic sign
 3. Original: two notes slur

Echo vivace

Musical score for "Echo vivace" by Silvius Leopold Weiss. The score is in G major and 3/4 time. It consists of five systems of music, each with a treble clef and a bass line. The first system starts at measure 1 and ends at measure 4. The second system starts at measure 5 and ends at measure 8. The third system starts at measure 9 and ends at measure 12. The fourth system starts at measure 13 and ends at measure 17. The fifth system starts at measure 18 and ends at measure 22. The sixth system starts at measure 23 and ends at measure 26. The score includes various musical notations such as notes, rests, slurs, and dynamic markings (p, f). The bass line includes fingering numbers and some special symbols like a circled 'a'.

1. Original: C-sharp (e on course 3)

28 *f* *p* *f*

4 e r r a ① r a ① 5 ① a

33 *p* *f*

a a a a a a a r r r 4 4 4

(1*)

38 *f* *p*

a a a a a a a a a 4 4 4 a a a

(2*) (3*) (4*)

43 *f*

a a a a a a a 4 a a a a a a

(5*)

48 *p* *f* *p*

a a a a a a a a a 6

(6*)

1. Original: p one bar before
2. Original: two notes slur
3. Original: slur not found
4. Original: slur not found
5. Original: slur one note later
6. Original: slur not found

Paysanne (Paisanne)

♩
♩
♩
♩
♩
♩
♩
♩
♩
♩

5

11

17

23

28

33

4 a a a a a

39

a a a a 4 a (1*) 4

44

a a a a a

49

a a a a a

54

a a a a (2*) a a

59

4 a a 6

1. Original: F-sharp (e on course 2)
2. Original: D (a on course 10)

Sarabande (Sarab:)

Musical score for Sarabande (Sarab:) in G major, BWV 1008, Part 16. The score is in 3/4 time and consists of 18 measures. It features a single melodic line with various ornaments and fingerings. The notation includes slurs, ties, and specific fingering numbers (1-5) for the left hand. The piece concludes with a repeat sign at the end of the 18th measure.

Measure 1: *3* *r*
a *e* *r* *e* *r* *e* *a* *a*
a *a* *a* *a* *a* *a* *a* *a*

Measure 3: *r* *a* *a* *a* *r* *e* *e* *e* | *r* *e* *r* | *a* | *r* *a*
a *4* *5* *6* *a* *a* *a* *a*

Measure 6: *a* *r* *r* *e* *r* | *a* | *r* *r* *b* *r* *r* | *e* *r* *a* *e* *r* *e* *e*
a *a* *a* *a* *a* *a* *a*

Measure 10: *b* *e* *r* *b* *r* *b* *e* *e* | *b* *e* *r* *b* *r* *b* *e* *e* | *g* *g* *e* *g* *g* | *h* *e* *g* *g*
5 *a* *5* *a* *a* *a* *4* *6* *5*

Measure 14: *h* *g* *g* *h* *g* *h* | *g* *h* *g* *h* *g* *h* | *g* *a* *r* *b* | *r* *r*
a *a* *5* *a*

Measure 17: *r* | *r* *e* *r* *e* *r* *e* | *r* *a* *e* *r* *r* *r* | *r* *a* *e* *e* *r* *a*
a *5* *a* *a* *a*

21

25

29

33

36

40

1. Original: C-sharp (e on course 3)

Gigue

6 8

6

11

17

23

29

34

39

$\text{e}^{\circ} \text{e} \text{rar}$ ereg $\text{e}^{\circ} \text{e} \text{rar}$ ere $\text{e}^{\circ} \text{ra} \text{e}$
 a a a a a

$\text{ar} \text{er} \text{e} \text{a}$ ar r $\text{r} \text{b}^{\circ} \text{e} \text{b}^{\circ} \text{r}$ $\text{r} \text{b}^{\circ} \text{e} \text{b}^{\circ} \text{b}$ $\text{r} \text{g} \text{g} \text{e} \text{e}$
 a a a a a

$\text{e} \text{h} \text{g} \text{e} \text{e}$ $\text{e} \text{h} \text{g} \text{h} \text{g} \text{g}$ $\text{i} \text{g} \text{i}$ $\text{h} \text{g} \text{h}$ $\text{g} \text{g} \text{g} \text{e} \text{g} \text{e}$ $\text{g} \text{e} \text{g}$ $\text{g} \text{e} \text{g}$ $\text{h} \text{g} \text{h} \text{g} \text{h} \text{g}$
 a a a a a a a a

$\text{g} \text{g} \text{g} \text{h} \text{g} \text{h}$ $\text{g} \text{e} \text{g} \text{e} \text{g} \text{e}$ $\text{e} \text{e} \text{e}$ $\text{g} \text{e} \text{g}$ $\text{r} \text{e} \text{er}$ $\text{b} \text{r} \text{r} \text{b}$ $\text{e} \text{e} \text{b} \text{e}$
 a a a a a a a a

$\text{r}^{\circ} \text{e} \text{r}$ $\text{a} \text{b} \text{ra}$ $\text{r} \text{r} \text{r} \text{b} \text{b}$ $\text{b} \text{r}^{\circ} \text{b} \text{r}$ $\text{b} \text{r} \text{b}$ $\text{a} \text{a}$ $\text{b} \text{r} \text{b}$
 a a a a a a a a

$\text{b} \text{e} \text{ra}$ $\text{r} \text{r} \text{b}$ $\text{r} \text{b} \text{r} \text{rar}$ $\text{b} \text{r}$ $\text{r} \text{b} \text{r} \text{rar}$ $\text{a} \text{b} \text{a}$
 a a a a a a

r $\text{r} \text{b} \text{r} \text{rar}$ $\text{b} \text{r}$ r $\text{r} \text{b} \text{r} \text{rar}$ r
 a a a a a a

$\text{a} \text{a} \text{er} \text{ra}$ $\text{e} \text{a} \text{ra} \text{r}$ $\text{e}^{\circ} \text{e} \text{rar}$ ereg $\text{e}^{\circ} \text{e} \text{rar}$ ere
 a a a a a a

1. Original: bass a chord later

45

51

57

63

68

73

78

84

- 1. Original: G-natural (c on course 1)
- 2. Original: B (c on course 3)
- 3. Original: slur not found
- 4. Original: slur not found
- 5. Original: slur not found
- 6. Original: F-natural (d on course 5)

Menuet

Handwritten musical score for a Minuet in G major by Silvius Leopold Weiss. The score is written on a single staff with a treble clef and a 3/4 time signature. It consists of 24 measures, divided into six systems of four measures each. The notation includes various note values (quarter, eighth, sixteenth notes), rests, and ornaments. The key signature is one sharp (F#). The piece ends with a repeat sign in the final measure.

Measures 1-4: $e \textcircled{\circ} e r$ | $g h g h$ | $i g i k i g h$ | a

Measures 5-8: $g h g h$ | $e \textcircled{\circ} e r$ | $e r e e$ | a

Measures 9-12: $e \textcircled{\circ} e r$ | $e r a e r a$ | $r e \textcircled{\circ} r$ | $e a$

Measures 13-16: $e \textcircled{\circ} e r$ | $g h g h$ | $e g e e g g$ | $e \textcircled{\circ} e r$

Measures 17-20: $a \textcircled{\circ} b r$ | $e \textcircled{\circ} e r$ | $r e b$ | $r b r r$

Measures 21-24: $e \textcircled{\circ} b \textcircled{\circ} r$ | $e \textcircled{\circ} e r$ | $e r a e r a$ | a

22

a e r a r a a r e r a r a r a r a e r a e

4 4 4 4

26

f e f g e g e g h g h e e r

5 4 4 4 4

29

e r e e e e r e r a e r a

4 4 4 4

32

r r e e e r e e

4 4 4 6

Fine

Tonalité : La majeur

Accord des basses du luth : 3 dièses

Scordature par octave

The diagram shows a lute fretboard with six strings. The notes are: 1st string (top): e (open), e (1st fret), a (4th fret); 2nd string: a (open), 4 (open), a (4th fret); 3rd string: a (open), 4 (open), a (4th fret); 4th string: a (open), 4 (open), a (4th fret); 5th string: a (open), 4 (open), a (4th fret); 6th string: a (open), 4 (open), a (4th fret). Below the fretboard is a treble clef staff with a key signature of three sharps (F#, C#, G#).

Accord des 13 chœurs du luth

The diagram shows a lute fretboard with six strings. The notes are: 1st string (top): a (open), a (1st fret), a (2nd fret), a (3rd fret), a (4th fret), a (5th fret); 2nd string: a (open), a (1st fret), a (2nd fret), a (3rd fret), a (4th fret), a (5th fret); 3rd string: a (open), a (1st fret), a (2nd fret), a (3rd fret), a (4th fret), a (5th fret); 4th string: a (open), a (1st fret), a (2nd fret), a (3rd fret), a (4th fret), a (5th fret); 5th string: a (open), a (1st fret), a (2nd fret), a (3rd fret), a (4th fret), a (5th fret); 6th string: a (open), a (1st fret), a (2nd fret), a (3rd fret), a (4th fret), a (5th fret). Below the fretboard is a treble clef staff with a key signature of three sharps (F#, C#, G#). The notes in the staff are: a (open), a (1st fret), a (2nd fret), a (3rd fret), a (4th fret), a (5th fret), a (open), a (1st fret), a (2nd fret), a (3rd fret), a (4th fret), a (5th fret).