

[Johann Michael Kühnel]

[(1665 - après 1725)]

[Partie]

Concerto, Menuet, Courante, Polonoise, Gigue

Si bémol majeur

Manuscrit de Vienne A-Wn18829

Vienne, Bibliothèque nationale autrichienne, Collection de musique

A-Wn ms. 18829

Folios 2v. - 7r.

Voir dans le manuscrit de Brno CZ-Bm372, pages 34 à 37 : Concerto, Courante et Gigue. (CZBm372_47)

Voir dans le manuscrit n° 1 de Göttweig, folios 54v. à 58r. Ex. B Moll Solo (A-GO1_35)

Voir dans le manuscrit de Grüssau PL-WRu2002, pages 55 à 57 : Courante et Menuet de la Parthia Auth: M. Kunel. (WRu23)

Voir dans le manuscrit d'Haslemere GB-HAB2, pages 157 et 158 Gigue [Has104]



Concerto

3

5

7

9

11

13

(*)

1. Sixteenth note in the original tablature

29

31

33

35

37

39

41

43

45

47

49

52

54

1. Original: rest with 11 course lute

Menuet

3

4

5

4

9

5 4

14

4

18

4

23

4 4

28

e e e e h a h a f a e a e a b a a a a a b a a b a

//a //a 4 5 5

33

e b b b b a a b a e e b a a b a b a a a e b a

6 5

38

e b a f a a e a f a f f e f e a f a a b e b

a e a e a e 4

43

e f a b a b b e a b b a f a a e a f a

//a //a a a a e

48

f f e f e a f a a b e b e f a b a e a e a b

a e a e 4 //a //a a a

53

b e a a b b a

//a a 5

Courante

The image shows a handwritten musical score for a piece titled "Courante". The score is written on a five-line staff with rhythmic notation above and tablature below. The tablature includes fret numbers (0-5) and rhythmic symbols (a, r, b). The score is divided into systems with measure numbers 4, 9, 13, 17, and 21. The tablature includes fret numbers (0-5) and rhythmic symbols (a, r, b).

System 1 (Measures 1-4):
 Measure 1: 3, b b b
 Measure 2: a a r, 5, 4
 Measure 3: a a r b a, //a
 Measure 4: b r a b a b, //a

System 2 (Measures 5-8):
 Measure 5: a b a a, 5
 Measure 6: a r a b a, a
 Measure 7: a a b a, a
 Measure 8: r b b b a b, //a

System 3 (Measures 9-12):
 Measure 9: b a b a b, 4
 Measure 10: a b a b a, 5
 Measure 11: r b r a r a b b, //a //a
 Measure 12: a a b a, 4(1*) 5

System 4 (Measures 13-16):
 Measure 13: r b r a r a b b, //a //a
 Measure 14: a b a b a, 4(2*) 5
 Measure 15: a a b, a
 Measure 16: a a b, a

System 5 (Measures 17-20):
 Measure 17: a a, a
 Measure 18: b a r a, 5 4
 Measure 19: a a b a r, a
 Measure 20: a a b a r, a

System 6 (Measures 21-24):
 Measure 21: e h h f h, a a
 Measure 22: h f a, 4
 Measure 23: a a b a r, a
 Measure 24: a a b a r, a

1. Slur not found in the original tablature
 2. Original: slur not found

24

29

33

38

43

48

Polonoise

3

3

6

10

14

1. Slur not found in the original tablature
 2. Slur not found in the original tablature
 3. Slur not found in the original tablature

Gigue

Handwritten musical score for a Gigue, consisting of six systems of music. Each system is written on a six-line staff with a treble clef and a 6/8 time signature. The notation includes various rhythmic values (quarter, eighth, and sixteenth notes), rests, and accidentals. Fingerings are indicated by numbers 1-5. Dynamics such as *f* (forte) and *h* (harmonic) are used. A repeat sign with first and second endings is present in the fifth system. The piece concludes with a final cadence in the sixth system.

System 1: Measures 1-3. Bass line starts with a 5. Rhythmic values: quarter, quarter, quarter, quarter, quarter, quarter, quarter, quarter, quarter, quarter, quarter, quarter.

System 2: Measures 4-7. Bass line starts with a 5. Rhythmic values: quarter, quarter, quarter, quarter, quarter, quarter, quarter, quarter, quarter, quarter, quarter, quarter.

System 3: Measures 8-11. Bass line starts with a double bar line. Rhythmic values: quarter, quarter, quarter, quarter, quarter, quarter, quarter, quarter, quarter, quarter, quarter, quarter.

System 4: Measures 12-15. Bass line starts with a 5. Rhythmic values: quarter, quarter, quarter, quarter, quarter, quarter, quarter, quarter, quarter, quarter, quarter, quarter.

System 5: Measures 16-19. Bass line starts with a 4. Rhythmic values: quarter, quarter, quarter, quarter, quarter, quarter, quarter, quarter, quarter, quarter, quarter, quarter.

System 6: Measures 20-22. Bass line starts with a 5. Rhythmic values: quarter, quarter, quarter, quarter, quarter, quarter, quarter, quarter, quarter, quarter, quarter, quarter.

1. Bass one note later in the original tablature

23

1. Original: D (a on course 2)

27

31

35

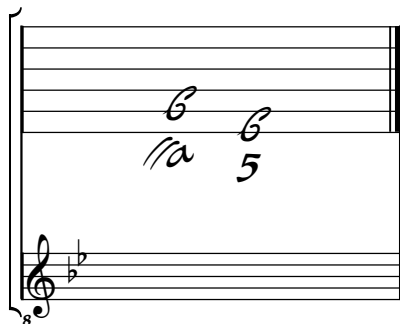
39

Fine

1. Original: D (a on course 2)

Tonalité : Si bémol majeur
Accord des basses du luth : 2 bémols

Scordature par octave



Accord des 13 chœurs du luth

