

Wolfgang Adam Anton von Hoffer
(ca 1707 à Vienne, 1757 à Mayence)

[2 Capriccios]

Capriccio de mr Hoffer : allegro,
Capriccio de mr Hoffer

Ré majeur

Manuscrits de Vienne A-Wn18829

Vienne, Bibliothèque nationale autrichienne, Collection de musique

A-Wn ms. 18829

Folios 41r. - 43r.



Capriccio de mr Hoffer : allegro

Musical score for Capriccio de mr Hoffer, showing measures 1 through 15. The score is in 3/8 time and features a single melodic line on a five-line staff. The notes are mostly eighth and sixteenth notes, often beamed together. The key signature has one sharp (F#). The score includes various dynamics like *p*, *f*, and accents, as well as articulation marks like slurs and accents. Measure numbers 3, 6, 9, 12, and 15 are indicated on the left side of the staff.

17

19

22

25

29

33

.../...

1. Original: eighth note

35

38

42

46

49

53

Capriccio de mr Hoffer

Handwritten musical score for a Capriccio by Wolfgang Adam von Hoffer. The score is written on a grand staff (treble and bass clefs) and includes various musical notations such as notes, rests, slurs, and dynamic markings. The piece is in 3/8 time and features several changes in meter and key signature.

The score is divided into systems, with measure numbers 4, 8, 12, 18, and 24 indicated on the left. The notation includes notes, rests, slurs, and dynamic markings such as *mf*, *f*, and *ff*. The piece features several changes in meter and key signature, including 3/8, 4/8, and 6/8. The notation includes notes, rests, slurs, and dynamic markings such as *mf*, *f*, and *ff*.

System 1 (Measures 1-3):
 Measure 1: 3/8 time, notes a, e, r, e, a, a, 6.
 Measure 2: 4/8 time, notes a, r, r, r, r.
 Measure 3: 3/8 time, notes a, e, r, e, a, a, 6.

System 2 (Measures 4-7):
 Measure 4: 3/8 time, notes r, r, r, r.
 Measure 5: 3/8 time, notes e, a, e, e, e, e.
 Measure 6: 3/8 time, notes a, r, a, r, r, a.
 Measure 7: 4/8 time, notes r, r, r, a.

System 3 (Measures 8-11):
 Measure 8: 3/8 time, notes a, e, r, r, a.
 Measure 9: 3/8 time, notes e, a, r, e, e, a.
 Measure 10: 3/8 time, notes e, a, r, a, r, e, a, a.
 Measure 11: 3/8 time, notes e, a, r, a, r, e, a, a.

System 4 (Measures 12-17):
 Measure 12: 3/8 time, notes a, a, a, a, a, a.
 Measure 13: 3/8 time, notes a, a, a, a, a, a.
 Measure 14: 3/8 time, notes f, f, f, f, f, f.
 Measure 15: 3/8 time, notes e, e, e, e, e, e.
 Measure 16: 3/8 time, notes e, e, e, e, e, e.
 Measure 17: 3/8 time, notes a, a, a, a, a, a.

System 5 (Measures 18-23):
 Measure 18: 3/8 time, notes r, r, r, r, r, r.
 Measure 19: 3/8 time, notes r, e, r, r, r, r.
 Measure 20: 3/8 time, notes a, a, a, a, a, a.
 Measure 21: 3/8 time, notes f, f, f, f, f, f.
 Measure 22: 3/8 time, notes e, e, e, e, e, e.
 Measure 23: 3/8 time, notes a, a, a, a, a, a.

System 6 (Measures 24-27):
 Measure 24: 3/8 time, notes a, a, a, a, a, a.
 Measure 25: 3/8 time, notes r, r, r, r, r, r.
 Measure 26: 3/8 time, notes a, a, a, a, a, a.
 Measure 27: 3/8 time, notes r, r, a, a, r, a.

28

31

34

38

43

51

.../...

56

60

64

69

79

84

(1*)

86 \downarrow \uparrow \downarrow \uparrow

e a f a e a f a f a f a | *h a f a h a f a f a f a*

a a a a a a a a

89 \downarrow \uparrow

e a f a e a f a f a f a | *h a f a h a f a f a f a*

a a a a

91 \downarrow \uparrow

e a f a f a f a h a f a | *e a f a f a f a h a f a*

a a a a a a

93 \downarrow \downarrow \downarrow

f^r f^r f^r e^r e | *f^a f^a f^a f^a f^a f^a* | *f^r f^r f^r e^r e*


a a a | *5 5 a* | *a a a*

96 \downarrow \downarrow \uparrow

f^a f^a f^a f^r f^r | *f^e f^r f^r e^r e* | *a a a a e*

5 a a | *a a a* | *a a a a e*

99 \uparrow \uparrow \downarrow \uparrow

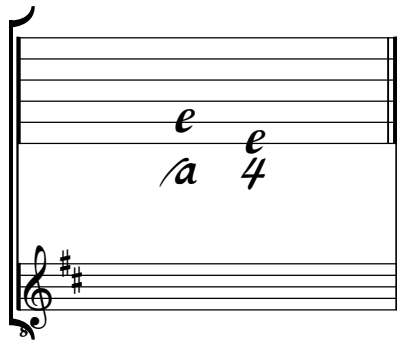
a a a a e | *a a a a e* | *a a e r a r a* 

a a a | *a a a* | *a a a a a*

Tonalité : Ré majeur

Accord des basses du luth : 2 dièses

Scordature par octave



Accord des 11 ou 13 chœurs du luth

