

***Wolfgang Adam Anton von Hoffer***

(vers 1707 à Vienne, 1757 à Mayence)

[Suite 3]  
**La belle Indifférente**  
**Mr: Hoffer**

[Sol majeur et sol mineur]

Manuscrits de Vienne

National Bibliothek Wien

V18829

Folios 97 à 106

# Les pièces de la suite

- 1 - Entrée
- 2 - Allemande
- 3 - Courante
- 4 - Gavotte
- 5 - Menuet
- 6 - Trio
- 7 - Gigue en Rondeau

## **Wolfgang Adam Anton von Hoffer**

(né à Vienne vers 1707, mort à Mayence en 1757)

**Wolfgang Adam Anton von Hoffer** fut luthiste au service des princes-archevêques, à la cour de l'Électorat de Mayence.

On le trouve (vers 1737, en particulier) auprès du prince-archevêque Philippe Karl von Eltz, ami et protecteur des sciences et des arts (de la musique, en particulier : quelques années plus tôt, il avait été chef de chœur de la cathédrale de Mayence !).

**Wolfgang Adam Anton von Hoffer** servit ensuite à la cour du prince-archevêque Johann Friedrich Karl von Ostein, despote éclairé inspiré par la philosophie des Lumières.

# - Entrée

8

4

7

10

13

16

19

23

28

# - Allemande

8

First musical staff, measures 1-4. Treble clef, key signature of one sharp (F#), common time signature (C). The melody consists of eighth and sixteenth notes.

3

Second musical staff, measures 5-8. Treble clef, key signature of one sharp (F#), common time signature (C). The melody continues with eighth and sixteenth notes.

5

Third musical staff, measures 9-12. Treble clef, key signature of one sharp (F#), common time signature (C). The melody continues with eighth and sixteenth notes.

8

Fourth musical staff, measures 13-16. Treble clef, key signature of one sharp (F#), common time signature (C). The melody continues with eighth and sixteenth notes. A *vib* marking is present above the eighth measure.

12

Fifth musical staff, measures 17-20. Treble clef, key signature of one sharp (F#), common time signature (C). The melody continues with eighth and sixteenth notes.

15

Sixth musical staff, measures 21-24. Treble clef, key signature of one sharp (F#), common time signature (C). The melody continues with eighth and sixteenth notes.

18

Seventh musical staff, measures 25-28. Treble clef, key signature of one sharp (F#), common time signature (C). The melody continues with eighth and sixteenth notes.

21

Eighth musical staff, measures 29-32. Treble clef, key signature of one sharp (F#), common time signature (C). The melody continues with eighth and sixteenth notes. A *vib* marking is present above the 30th measure.

25

Ninth musical staff, measures 33-36. Treble clef, key signature of one sharp (F#), common time signature (C). The melody concludes with a double bar line and a repeat sign.

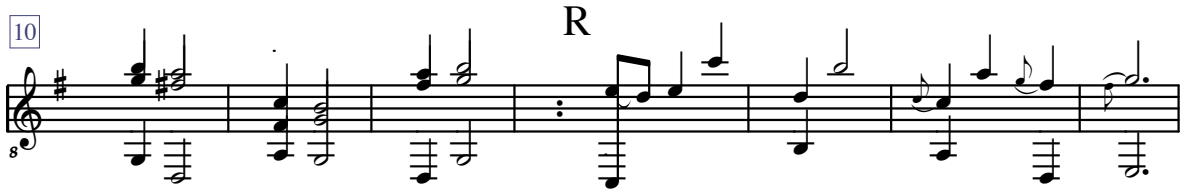
# - Courante



# - Gavotte



# - Menuet





# - Trio



Da capo Menuet

# - Gigue en rondeau

8

5

9

14

18

Da capo

22

27

33

38

Da capo