

[Placide Marie Pichler ?]
(1725 - 1796)

Sarabande

Ré majeur

Manuscrits de Varsovie

Warszawa, Biblioteka Uniwersytecka
PL-Wu ms. RM 4142 (olim Ms. Mf. 2010)
Page 97



Sarabande

17

3

6

11

17

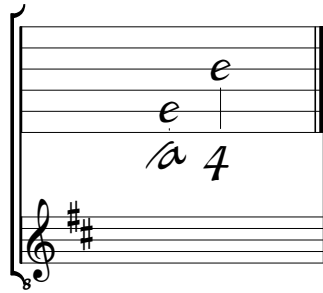
21

R

1. Indication rythmique absente de la tablature originale.

Tonalité et accord du luth : Ré majeur.

Scordature par octave



Accord des 11 chœurs du luth

Musical notation for the 11-voice lute chord. It shows a guitar staff with six lines. The notes are: a on the 1st line, a on the 2nd line, a on the 3rd line, a on the 4th line, a on the 5th line, and a on the 6th line. Below the staff, the notes 'a', 'a', 'a', 'a', 'a', 'a', 'a', 'a', 'a', 'a', 'a' are written. Below the staff, there is a treble clef, a key signature of two sharps (F# and C#), and a bass clef.