

[Compositeur anonyme]

Præludium

Fa majeur

Manuscrit de Varsovie PL–Wu2008

Varsovie, Bibliothèque universitaire
PL-Wu RM 4140 (olim Mf. 2008)

Pages 74 et 75

Voir dans le manuscrit de Wroclaw PL-WRu2002, page 25, Præludium de la Parthia ex F dur. [WRu9]

Voir dans le manuscrit de Varsovie PL-Wu2009, pages 98 et 99, Præludium [PLWu2009_87]



Præludium

♩

4. 4. 4. 4. 4. 4. 2. 2. 2. 2.

3

♩

♩

♩

♩

♩

♩

6

♩

♩

♩

♩

♩

♩

♩

9

♩

♩

♩

♩

♩

♩

♩

♩

♩

11

♩

♩

♩

♩

♩

♩

♩

♩

♩

13

♩

♩

♩

♩

♩

♩

♩

♩

♩

14

Handwritten musical notation on a five-line staff. The notes are *f*, *e*, *f*, *e*, *f*, *e*, *f*, *e*, *r*. Above the notes are various ornaments, including slurs and small 'n' characters. Below the staff is a '4'.

15

Handwritten musical notation on a five-line staff. The notes are *a*, *a*, *r*, *a*, *r*, *a*, *r*, *a*, *e*. Above the notes are various ornaments, including slurs and small 'n' characters. Below the staff are a '4' and a 'a'.

16

Handwritten musical notation on a five-line staff. The notes are *a*, *a*, *a*, *a*, *a*, *a*, *r*, *r*, *a*, *a*, *a*, *a*. Above the notes are various ornaments, including slurs and small 'n' characters.

17

Handwritten musical notation on a five-line staff. The notes are *b*, *b*, *a*, *a*, *r*, *r*, *a*, *r*, *a*, *b*, *a*, *a*, *a*, *a*, *a*, *a*. Above the notes are various ornaments, including slurs and small 'n' characters. Below the staff are a '4' and a 'a'.

18

Handwritten musical notation on a five-line staff. The notes are *a*, *a*, *a*, *a*, *a*, *a*, *e*, *e*, *r*, *r*, *r*, *r*, *r*. Above the notes are various ornaments, including slurs and small 'n' characters.

19

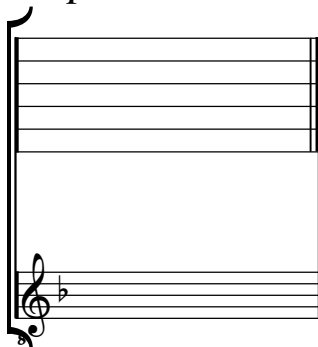
arpeggio

Handwritten musical notation on a five-line staff. The notes are *f*, *f*, *f*, *f*, *f*, *f*, *r*, *a*, *a*, *b*, *a*, *r*, *a*. Above the notes are various ornaments, including slurs and small 'n' characters. Below the staff are a '4' and a 'a'.

Tonalité : Fa majeur

Accord ordinaire du luth et Si-bémol

Scordature par octave



Accord des 11 chœurs du luth

Musical notation for the 11-voice lute chord. The top staff shows the fretting positions for the 11 voices, with the letter 'a' indicating the fret number. The bottom staff shows the corresponding notes in a treble and bass clef. The notes are: C4, E4, G4, C5, E5, G5, C5, E5, G5, C5, E5, G5.