

Silvius Leopold Weiss

(1687 - 16 oct. 1750)

[Partie 88]

Allemande, Bourrée (Bouree), Courante, Sarabande,
Menuet, Trio, Allegro, [Bourrée ou Anglaise ?], Menuet

WeissSW88.1, 2, 3, 4, 5, 6, 7, 9, 8
(WeissSW81.1 et 2, WeissSW13*, WeissSW12*)

Do majeur

Manuscrit de Grüssau PL-Wu2005

Bibliothèque universitaire de Varsovie

PL-Wu ms. RM 4138 (olim Ms. Mf. 2005)

Pages 8 à 17

*Voir dans le manuscrit de Grüssau PL-Wu2003, folios 5v à 10r : Partie 88
(PLWu2003_2)*

*Voir dans le Manuscrit Harrach I Schloss Rohrau A-ROI, pages 90 à 94 :
Suite 6 (HR14)*

*Voir dans le manuscrit Harrach II Schloss Rohrau A-ROII, pages 65 et 66 :
Presto (HR19)*

*Voir dans le manuscrit de Göttweig A-GÖ1, folios 6v. et 7r :
Courante W:hberg: (A-GÖ1_8)*

*Voir dans le manuscrit d'Haslemere GB-HAB2 (Le Luth Doré Editions)
... pages 175 et 176 : Courante par Weiss*

... pages 179 et 180 : Courante (variante du même thème)

Voir dans le manuscrit de Dresde D-Dl2841 (Le luth Doré Editions)

volume 2, pages 62, 63 : Allemande et Courante, variantes des mêmes thèmes

*Voir dans le manuscrit de Londres GB-Lbl30387 (Le Luth Doré Editions)
folio 90v : Menuet, folio 89v : pièce sans titre (Anglaise ?)*



[Partie 88]

WeissSW88.1 - WeissSW81.1

Allemande

The musical score for the Allemande is written on a single staff with a treble clef and a common time signature (C). The piece consists of 13 measures, divided into four systems. The notes are handwritten, and the fingerings are indicated by numbers 1-5 below the notes. The first measure starts with a common time signature 'C'. The second measure has a '4' below it, indicating a four-measure phrase. The third measure has a '5' below it, indicating a five-measure phrase. The fourth measure has a '4' below it, indicating a four-measure phrase. The fifth measure has a '5' below it, indicating a five-measure phrase. The sixth measure has a '4' below it, indicating a four-measure phrase. The seventh measure has a '5' below it, indicating a five-measure phrase. The eighth measure has a '4' below it, indicating a four-measure phrase. The ninth measure has a '5' below it, indicating a five-measure phrase. The tenth measure has a '4' below it, indicating a four-measure phrase. The eleventh measure has a '5' below it, indicating a five-measure phrase. The twelfth measure has a '4' below it, indicating a four-measure phrase. The thirteenth measure has a '5' below it, indicating a five-measure phrase. The score includes various musical notations such as slurs, ties, and dynamic markings like 'ff' and 'f'. There are also some handwritten annotations like 'a', 'b', and 'c'.

1. Original : Sol dièse (b sur le 7e chœur)

17

20

23

26

29

R

32

R

Bourrée (Bouree)

4

7

11

15

19

22

1. Original : basse Sol placée sous l'accord suivant

2. Original : liaison absente

Courante

3

4

5

9

13

17

21

4

(*)

4

1. Original : Fa (a sur la chanterelle)

25

29

33

37

41

45

.../...

1. Original : liaison absente
 2. Original : indication rythmique absente

49

Handwritten musical notation for measures 49-53. Measure 49: *k k k k*. Measure 50: *f g a r r a*. Measure 51: *r r a r r a*. Measure 52: *k k h k*. Measure 53: *a a*.

54

Handwritten musical notation for measures 54-57. Measure 54: *f h g h g*. Measure 55: *g h g h*. Measure 56: *i g h g h*. Measure 57: *g g h g h h*.

58

Handwritten musical notation for measures 58-61. Measure 58: *k k h k h h*. Measure 59: *g g h g h h*. Measure 60: *k k h k h h*. Measure 61: *g h g a a*.

62

Handwritten musical notation for measures 62-65. Measure 62: *a r a r a*. Measure 63: *r p a p r*. Measure 64: *p a r a a*. Measure 65: *a a p*.
 (1*) (2*)

66

Handwritten musical notation for measures 66-70. Measure 66: *a p a r p*. Measure 67: *p a e a p*. Measure 68: *B r a r*. Measure 69: *r p p r*. Measure 70: *r a r a*.

71

Handwritten musical notation for measures 71-74. Measure 71: *a r a p*. Measure 72: *f a f r p*. Measure 73: *a a r*. Measure 74: *a a r*.

1. Original : cette mesure est redoublée
 2. Original : cette mesure est redoublée

75

79

83

88

92

96

1. Original : liaison absente

Sarabande

Handwritten musical score for Sarabande, featuring a 3/4 time signature and various musical notations including notes, rests, and ornaments.

The score is divided into systems, with measures numbered 1 through 16. The notation includes notes, rests, and ornaments, with some notes marked with 'a' or 'k'.

System 1 (Measures 1-2):
 Measure 1: 3/4 time signature, notes f, a, e, r, a.
 Measure 2: notes a, r, a, a, r, a.

System 2 (Measures 3-4):
 Measure 3: notes a, a, r, r, r, r, h, g, h.
 Measure 4: notes f, g, f, f, g, e, g, f.

System 3 (Measures 5-6):
 Measure 5: notes e, e, r, e, a.
 Measure 6: notes r, r, a, b, b, r, a.

System 4 (Measures 7-8):
 Measure 7: notes r, h, h, g, h, f, e, f.
 Measure 8: notes e, f, e, a, a, a, a.

System 5 (Measures 9-11):
 Measure 9: notes e, r, a, a, a, a.
 Measure 10: notes a, r, a, a, r, a.
 Measure 11: notes r, a, a, a.

System 6 (Measures 12-14):
 Measure 12: notes a, r, a, r, a, r.
 Measure 13: notes r, a, a, r, a, r, a, h, f, h, f.
 Measure 14: notes r, a, a, r, a, r, a, h, f, h, f.

System 7 (Measures 15-16):
 Measure 15: notes h, f, h, f, f, h, a, h, a, k, a, h, a, k.
 Measure 16: notes a, h, a, f, a, h, a, k, a, h, a, k.

18

4 4 *f*

20

f 4 *f* *f*

23

a a a *f*

25

a *f* a r

27

4 a [r] (1)

29

4 (2*) *f* a

31

a a e a *f* a a 4

1. Original : Mi (c sur le 5e chœur)
 2. Original : liaison absente

Menuet

Handwritten musical score for a Minuet in G major, BWV 501 by Johann Sebastian Bach. The score is written on a grand staff with treble and bass clefs. It features a 3/4 time signature and includes various musical notations such as notes, rests, and ornaments. The piece is divided into measures, with measure numbers 6, 11, 16, 21, 26, 31, and 36 marked on the left. The score concludes with a decorative flourish in the final measure.

Trio

3

6

11

16

21

27

35

1*)

2*)

3*)

4*)

Menuet da Capo

1. Original : basse absente
2. Original : mesure absente
3. Original : notes absentes
4. Original : mesure absente

Allegro

Musical score for voice with rhythmic and articulation markings. The score is divided into measures 1 through 18. Above each staff are rhythmic notations (half notes, quarter notes, eighth notes, sixteenth notes, rests) and dynamic markings (f, p). Below the staves are various markings including accents (//), slurs, and fingerings (4, 5). The score concludes with a double bar line and repeat dots, followed by an ellipsis (.../...).

Measure 1: 3/4 time signature. Notes: a, r, r, a, r, h. Dynamics: f. Markings: //, 4, a, //a //a.

Measure 3: Notes: h, f, a, r, a, r, a. Dynamics: f. Markings: //a //a //a, 4, 4, 4, 5.

Measure 6: Notes: e, e, e, r, r, r, r, e, e, e. Dynamics: f. Markings: //a, a, e, //a //a //a //a.

Measure 9: Notes: r, b, r, r, b, r, r, e, e, e, e, e, r, b, r, a, r, p, a, p, a, r. Dynamics: f. Markings: //a, 5 (1*), 4.

Measure 12: Notes: e, a, e, e, a, e, e, f, a, f, f, f, f, h, a, h, h, h, h, h. Dynamics: f. Markings: //a (2*), //a (3*), //a.

Measure 15: Notes: r, r, a, r, r, a, r, r, a, r, a, r, a, p, a, r, a, r, b, a, a, p, r, r, e, a. Dynamics: f. Markings: //a, 4, 4, //a, a.

Measure 18: Notes: b, r, r, b, r, a, p, a, r, r, b, r, a, r, b, r, [r] a, p, a, a, a, a. Dynamics: f. Markings: //a, a, (4*), a.

Ellipsis (.../...)

1. Original : La Sol La (e c e sur le 4e chœur)
2. Les liaisons de cette mesure et des deux suivantes sont absentes de l'original
3. Original : Sol dièse et Si bémol (g sur le 5e chœur et f sur le 4e chœur)
4. Original : Mi (c sur le canto)

20

r r a r r a r | *e a r e e r e g h*

a | *trill a*

22

g f e g g h k g | *h g h g h g h g h f*

a | *trill a trill a 4*

24

e a e e e a e e e a e e | *r e r e r e r e r e r e*

trill a | *4 5*

26

r r r r r r r r r r | *e r e r e r e r e r*

4 5 6

28

b r b b b r b b b r b b | *a r a a a r a a a r a a*

a a a b b b

30

e e e r e e e r e e [e] r | *r e r b r e r b r e r b*

a a a () b b b*

32

r r r a r r r a r r r a | *r r r r r r r r r r*

a a a trill a trill a trill a

1. Original : Si (c sur le 3e chœur)

34

5 5 5 4

36

a a a a a a a 5 4 a a

39

4 a a

41

a triplets a a a ø

43

4 a a 4 4

46

4 ø 4

Menuet

3

5

10

14

18

22

4

26

30

34

[Bourrée ou Anglaise ?]

The image shows a musical score for a piece titled "[Bourrée ou Anglaise ?]". The score is written on a grand staff with two systems of staves. The first system consists of a treble clef staff and a bass clef staff. The second system also consists of a treble clef staff and a bass clef staff. The music is in 2/4 time, as indicated by the '2' and '4' at the beginning of the first system. The score is divided into measures, with measure numbers 2, 4, 6, 11, 16, 22, 26, and 32 marked. The notation includes various rhythmic values (quarter notes, eighth notes, sixteenth notes), rests, and accidentals. There are several annotations in the score, including (1*), (2*), (3*), and (4*), which correspond to the footnotes at the bottom of the page. The score ends with a double bar line and repeat dots.

1. Original : Ré (a sur le 10e chœur)
2. Original : liaison absente
3. Original : Sol dièse (b sur le 7e chœur)
4. Original : La (e sur la chanterelle)

36

42

48

54

59

64

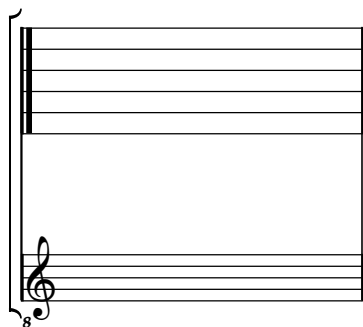
70

- 1. Original : basse absente
- 2. Original : basse absente
- 3. Original : liaison absente
- 4. Original : liaison absente
- 5. Original : basse absente

Tonalité : Do majeur

Accord ordinaire du luth

Scordature par octave



Accord des 13 chœurs du luth

