

[Johann Kropffgans ?]

(1708 - 1770)

[11 pièces
mises en sonate]

Sol majeur

Manuscrits de Varsovie

Warszawa, Biblioteka Uniwersytecka
PL-Wu ms. RM 4138 (olim Ms. Mf. 2005)

folios 60 à 70

Voir dans le manuscrit de Varsovie PL-Wu2003,

- folios 46v. à 48r., Pastorella, Menuet et Trio. [PLWu2003_31]

- folios 48v. à 53r., 8 pièces mises en sonate. [PLWu2003_32]

Les pièces

Intrada

Gigue

Pastorella

Menuet

Trio

Pastorella

Scherzo

[Pièce sans titre]

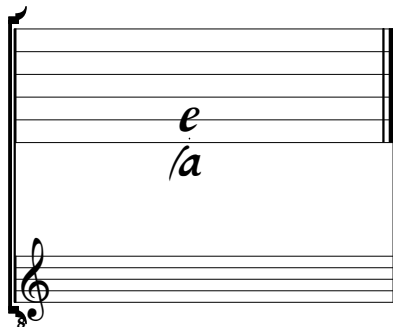
Menuet

[Pièce sans titre]

Presto

Tonalité et accord du luth : sol majeur

Scordatura par octave



Accord des 13 chœurs du luth



Intrada

\hat{r} \downarrow \hat{r} \hat{m} \hat{m} \hat{r} \hat{m} \hat{m} \hat{r}

C \hat{r} \hat{b} \hat{a} \hat{b}

\hat{r} \hat{m} \hat{m} \hat{r} \hat{m} \hat{m} \hat{r} \hat{m} \hat{m} \hat{r} \hat{m} \hat{m} \hat{r} \hat{m} \hat{m} \hat{r} \downarrow \hat{r}

454 *lla* *lla* *lll* *llla* *lll* *llla* *lll* *llla*

\hat{m} \hat{m} \hat{m} \hat{m} \hat{m} \hat{m} \hat{m} \hat{m} \hat{m} \hat{m} \hat{m} \hat{m} \hat{m} \hat{m} \hat{m} \hat{m} \hat{m}

\hat{m} \hat{m} \hat{m} \downarrow \hat{m} \hat{m} \hat{m} \hat{m} \hat{m} \hat{m} \hat{m} \hat{m} \hat{m} \hat{m} \hat{m} \hat{m}

(1)*

\hat{r} \hat{m} \hat{m} \downarrow \hat{r} \downarrow \hat{r} \hat{m} \hat{m} \hat{r}

\hat{m} \hat{m} \hat{r} \hat{m} \hat{r} \hat{m} \hat{r} \hat{m} \hat{r} \hat{m} \hat{r} \hat{m} \hat{r} \hat{m} \hat{r} \hat{m} \hat{r}

1. 2 notes absentes de la tablature originale.

18

Tablature: r b r e r e r | 6 r b r b r b | r r r r r r r r r r r r r r

Notes: r e r e a e r | 6 r a r a r a | a a a a a a a a a a

21

Tablature: r r r r r r r r r r r r | r b r b r b | r b r r r b r e r e r e r

Notes: a a a a a a a a a a | a a r | a r | a r 5

25

Tablature: r b r r e r e e r e | r | a f e f g e f e h g h a

Notes: a r | a | a a a a

28

Tablature: f e f g e f e h g h a | r r e r e e f e | f f e g e e g h

Notes: a a a | 454 | a a a a a a a a a a

31

Tablature: g g e f e f a | r a a a a a a a a a | r a a a a a a a a

Notes: a a a | r a | r b r b r a | a a a a a a a a a a

(1*)

34

Tablature: k k k k h k h h h h g h | f g f f e e e f | r r a r r r r r r r r r

Notes: a a (2*) a a | a a a | r a a a a a a a a a

37

Tablature: r r a r r r r r r r r r | a r a r b r a

Notes: a a a a a a a a | a a a a



1. Tablature originale : fa (a sur le 4ème chœur).
 2. Tablature originale : ré (k sur la chanterelle).

Gigue

r m r m r J. m m r m r

m r m r m r m r r m r m r m r

m m m m m m

m r m r m r m r

$\text{r m r m r m J. r m r m r J.}$

m m m m r m m

20

23

26

30

33

36

40



Pastorella

Handwritten musical notation for the first system of 'Pastorella'. It features a treble clef, a common time signature (C), and a key signature of one flat (B-flat). The notation includes various rhythmic values (quarter, eighth, and sixteenth notes) and rests. The notes are written in a shorthand style with letters 'a', 'r', 'g', 'f', 'e', and 'k' representing different pitches. The system consists of four measures.

Handwritten musical notation for the second system, starting at measure 5. It continues the melodic line with similar rhythmic patterns and shorthand notation. The system consists of six measures.

Handwritten musical notation for the third system, starting at measure 11. The notation includes some dynamic markings like 'f' (forte) and 'e' (piano). The system consists of five measures.

Handwritten musical notation for the fourth system, starting at measure 16. It features a variety of rhythmic patterns and shorthand notation. The system consists of six measures.

Handwritten musical notation for the fifth system, starting at measure 22. This system includes a repeat sign (double bar line with dots) and a first ending (triple bar line with dots). The notation uses shorthand letters and includes some grace notes. The system consists of seven measures.

Handwritten musical notation for the sixth system, starting at measure 29. It continues the piece with similar rhythmic and melodic elements. The system consists of eight measures.

37

a a a a a a

43

a a a a a a a

50

(1*) a a a a a a a

56

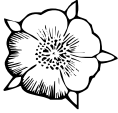
a a a a a

62

a a a a R a

69

5 4 a a



1. Un si (d sur le 6ème chœur), présent dans la tablature originale, a été supprimé.

Menuet

6

11

17

23

29

Trio

Mi mineur

Handwritten musical notation for measures 1-4. The staff shows notes and rests with fingerings (r, m, l) and fingering numbers (3, 6, 5). Below the staff are fingering instructions: *lla a a/a lla a a/a lla 6 5 a*.

Handwritten musical notation for measures 5-8. The staff shows notes and rests with fingerings (r, m, l) and fingering numbers (a, 2, 3, 4). Below the staff are fingering instructions: *a 2ra a 2ra a lla lla lla 4*.

Handwritten musical notation for measures 9-12. The staff shows notes and rests with fingerings (g, e, g, e, r, e, f, a, F, a, f, a, r, a). Below the staff are fingering instructions: *lla lla 4 5 4 4 5 6 5 4 lla a 6 6r 6*.

Handwritten musical notation for measures 13-16. The staff shows notes and rests with fingerings (r, a, r, e, r, a, a, f, a, a/a, a, a/a). Below the staff are fingering instructions: *a a2a e e f la laa/a a a/a*.

Handwritten musical notation for measures 17-20. The staff shows notes and rests with fingerings (r, a, r, e, r, e, r, r, b, r, r, r). Below the staff are fingering instructions: *2 6 rx lla a a/a lla a a/a lla lla 4*.

Handwritten musical notation for measures 21-24. The staff shows notes and rests with fingerings (e, r, e, h, g, h, g, f, 6, F, r, 6, 6, r, r). Below the staff are fingering instructions: *5 lla la a 4 6 5*. The piece ends with a double bar line and a flower illustration.

Pastorella

3

6

12

18

23

29

1. Basse absente de la tablature originale.

Ms. Varsovie PLWu2005, Johann Kropffgans ? 11 pièces en sonate, en sol majeur. [PLWu2005_20] Page 10

Scherzo

2 4
 f 9 a | r r | 2 a r a 2 | r r a | f e r e f | r a e a g
 a 5 4 a | a || a | a a | a a | a a | a r a

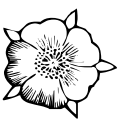
7 r m r | r m r | r j | r | r j | r | r
 f r a r a | f e r e e | 9 f e | f e | 9 f e | f e | 9 f e |
 a e e | a a | a a || a | a a | a a | a a || a | a a

14 j | r m | r m | r m r | r j. | r m | r m | r m | m | r m m
 f :||: a e a | r a | r a r a | r | f f r | e e | f 9 | 2 2 ere
 a a | a a | e a || a | a | 9 | a | a a

23 m | r m m m | r m m m | r j | r m | r m | r m r | r j
 r r | a a ere | r r r 6 6 | r r | f 9 a | r r | 2 a r a 2 | r r a
 a a || a | a a | a a a r | r | a 5 4 a | a a || a | a r

31 r m r | r m r | r m r | j | m | j
 2 e r e f | 2 r e r g | g e f e f | h | h g e f e f e h | f e f
 6 || a 4 5 || a a 4 | a a || a || a || a || a || a

37 m | j. | r r j | r | r j | r | r | j
 2 r a | r 6 r 6 | a | r | r 6 | r a | r 6 | a | r | r 6 | r a | r a | 2 || a | a
 || a



[Pièce sans titre]

1 2 3 4 5 6

7 8 9 10 11 12 13 14 15 16

17 18 19 20

21 22 23 24 25

26 27 28 29

30 31 32 33 34

- 1. Tablature originale : fa (a sur le 4ème chœur).
- 2. Tablature originale : mi (c sur le canto).
- 3. Tablature originale : confusion dans les rythmes pendant 2 mesures.
- 4. Tablature originale : si bémol (f sur le 4ème chœur).

Menuet

3

7

13

19

25

32

Fin

(1*)

5 4

4

6

6

1. Ornement absent de la tablature originale.

40

47

54

(1*)

59

63

Da Capo



1. Note absente de la tablature originale.

[Pièce sans titre]

Handwritten musical notation for the first system, measures 1-3. The notation includes notes, rests, and fingerings (r, 6, 5) on a five-line staff. A common time signature 'C' is present at the beginning. Below the staff, there are markings such as 'lla', '5', '55', and 'lla'.

Handwritten musical notation for the second system, measures 4-6. The notation includes notes, rests, and fingerings (r, 6, a, b). Below the staff, there are markings such as 'a', 'lla', and 'lla'.

Handwritten musical notation for the third system, measures 7-9. The notation includes notes, rests, and fingerings (r, 6, a, b, x). Below the staff, there are markings such as 'lla', 'a', and '4'.

Handwritten musical notation for the fourth system, measures 10-11. The notation includes notes, rests, and fingerings (r, 6, a, b). Below the staff, there are markings such as 'lla', 'la', 'a', 'lla', and '4 5 la'.

Handwritten musical notation for the fifth system, measures 12-14. The notation includes notes, rests, and fingerings (r, 6, a, b). Below the staff, there are markings such as 'a', 'lla', 'lla', 'a', 'a', 'a', 'lla', 'a', and 'lla'.

Handwritten musical notation for the sixth system, measures 15-17. The notation includes notes, rests, and fingerings (r, 6, a, b). Below the staff, there are markings such as 'a', 'a', 'a', 'lla', 'a', 'lla', and 'lla'.

18

a a a a a a a

21

a a a a a a a (1*)

24

a a a a a a a (1*)

27

a a a a a a a (2*)

30

a a a a a a a (3*)

33

a a a a a a a (3*)

36

a a a a a a a (3*)

1. Tablature originale : mi (c sur le canto) et do dièse (e sur le 3ème chœur).
 2. Tablature originale : sol (c sur la chanterelle).
 3. Tablature originale : mi (9ème chœur).
 4. Note absente de la tablature originale.

Presto

Musical score for "Presto" in common time (C). The score consists of 19 measures, with guitar tablature and standard notation.

Measure 1: *r a r a r* | *r a r* | *r a r b r b r a r b r a*
 Measure 4: *e a a e e r e a e r e a* | *g a a g g e g a g e g a* | *h a a h h g h a h g h a*
 Measure 7: *k h k h* | *m m m m m m* | *k k k k k k k k*
 Measure 10: *h h k h h h k h* | *g f g f g f h f* | *e f e f e f e f e f*
 Measure 13: *f a e f a e a f a e a f a* | *f a e f a e a a e a f a* | *a a a a a a a a*
 Measure 16: *a a a a a e f* | *a a a a a a a a* | *a a a a a e f*
 Measure 19: *a a r a a* | *a a r a r e a* | *a r b r a r a r a r a*

Fingerings: 5 4 4 4 5 5
 Dynamics: *f*, *m*

Note 1: Note absente de la tablature originale.

1. Note absente de la tablature originale.

22 M M M M M M M M S S

r r a r r a r r a r a | *ɔ r a ɔ r a r a r r a r* | *g a a r g a a r*

||a ||a a a a a a a a

25 S M J J S S S M J S M M M M M M M

r a r r a x | *g a a r g a a r* | *g a r r a r a f e f f e f f e f r f f f*

4 a a a a 4 a 4 4

29 M M M M M M M M M M M M

ere ere ɔ r e a e e r a r r a r r a r r a r | *ɔ r a ɔ r a r a r r a r*

ɔ ɔ a a a a a a a a

32 S S S S S S S S M M S M S M S

f e a a r a | *a r r b r* | *r r b e e r g* | *h f h g h g f e r e r e*

a a a 5 5 5 ||a a 4 a

36 M M S M M M M M S S S J S S

e e r b r | *r r r r r* | *r r r r r r r b r e r b r* | *r r r r a a r a r r a r* | *r a r*

5 ||a a a r a a a r a a r ||a 5 ||a a a

40 S M J S M M M M S M M S M M

r a r b r | *r a r a r b r b r a e a a e e r e a e r e a g a a g g e g a g e g a*

a a a a a a a

44 S S M M M M M M S M M M M


h a a h h a a h h a e a [h] a e a g a f a g a f a | *h a e a h a e a g a f a g a f a*

a a ||a (1*) ||a ||a ||a ||a

47 M M M M J

r r r r r r r r | *r r r r r r r b r a* | *r*

R 5 4 ||a ||a ||a ||a a a 5 4 ||a ||a 4 ||a a (2*)



1. Tablature originale : si (g sur la chanterelle).
 2. Tablature originale : mi (9ème chœur).