

[Compositeur anonyme]

Allegro (Alleg:)

Ré mineur

Manuscrit de Grüssau PL-Wu2004

Bibliothèque universitaire de Varsovie

PL-Wu ms. RM 4137 (olim Ms. Mf. 2004)

Addendum 4

Pas de correspondance



Allegro (Alleg:)

Musical notation system 1 (measures 1-5):

Notes above staff: ♪ ♪ ♪ ♪ ♪ ♪ ♪ ♪ ♪ ♪

Staff 1 (treble clef): 2 a a a a | r a a a | r r a a | e e a | 6 r 6

Staff 2 (bass clef): 4 a | e | a | a | a

Handwritten notes below staff 2: a | e | a | a | a

Musical notation system 2 (measures 6-10):

Notes above staff: ♪ ♪ ♪ ♪ ♪ ♪ ♪ ♪ ♪ ♪

Staff 1 (treble clef): a e a a | r r a e | a :||: a a a a | r a a a

Staff 2 (bass clef): a | a | a | a | a

Handwritten notes below staff 2: a | a | a | a | a

Musical notation system 3 (measures 11-15):

Notes above staff: ♪ ♪ ♪ ♪ ♪ ♪ ♪ ♪ ♪ ♪

Staff 1 (treble clef): e a a a | a | f f | e f a r a a | a a 3 r

Staff 2 (bass clef): a a a a | a 4 | a a | a | a 4

Handwritten notes below staff 2: a a a a | a 4 | a a | a | a 4

Musical notation system 4 (measures 16-21):

Notes above staff: ♪ ♪ ♪ ♪ ♪ ♪ ♪ ♪ ♪ ♪

Staff 1 (treble clef): a a a a | r r r r | a a a r | e e a | f f

Staff 2 (bass clef): a | a | a | a | a | a a

Handwritten notes below staff 2: a | a | a | a | a | a a

Musical notation system 5 (measures 22-25):

Notes above staff: ♪ ♪ ♪ ♪ ♪ ♪ ♪ ♪ ♪ ♪

Staff 1 (treble clef): a e a a | r r r a 2 e | a | a

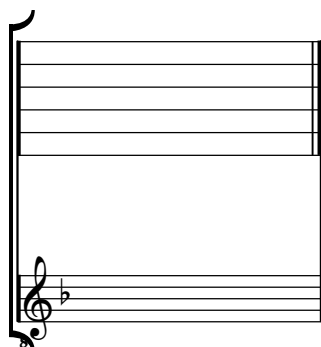
Staff 2 (bass clef): a | a | a | a

Handwritten notes below staff 2: a | a | a | a

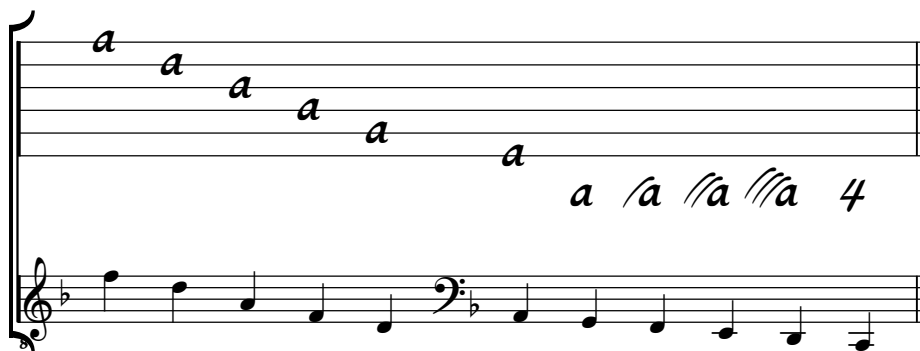
Tonalités : Ré mineur

Accord ordinaire des basses du luth

Scordature par octave



Accord des chœurs du luth



Musical notation for the lute chorus chord. The top staff shows six notes, each labeled with a lowercase 'a', representing the chord's structure. The bottom staff shows the corresponding musical notation in a bass clef, with a key signature of one flat (B-flat) and a common time signature. The notes are: A2, B-flat2, C3, D3, E3, F3.

