

*[Compositeur anonyme]*

# [2 pièces]

[Introduction], Allemande

-

Do mineur

Manuscrit de Grüssau PL-Wu2003

*Bibliothèque universitaire de Varsovie*

PL-Wu ms. RM 4136 (olim Ms. Mf. 2003)

*Folios 81v - 82r*

*Voir dans le manuscrit de Grüssau PL-Wu2005, pages 144, 145 et 149 :  
2 pièces en Do mineur [PLWu2005\_49]*



# [Introduction]

The image shows a page of musical notation for a guitar introduction, consisting of nine staves of tablature. The notation includes various rhythmic markings such as '4', '6', and '3' (triolets), and fingerings like 'm3' and '5'. The notation is written in a cursive style, typical of guitar tablature. The first staff is marked with '(1\*)' and has a 'C' time signature. The second staff is marked with '2'. The third staff is marked with '3'. The fourth staff is marked with '4'. The fifth staff is marked with '5'. The sixth staff is marked with '6'. The seventh staff is marked with '(3\*)'. The eighth staff is marked with '7'. The ninth staff is marked with '9'. The notation is written on a five-line staff for each line, with letters 'a', 'b', 'c', 'd', 'e', 'f', 'g', 'h', 'i', 'k' representing fret positions. The notation is written in a cursive style, typical of guitar tablature.

1. La tablature originale ne comporte aucune autre indication rythmique que celle des triolets.
2. Original : Si bécarré (g sur le 4e chœur).
3. Original : note absente

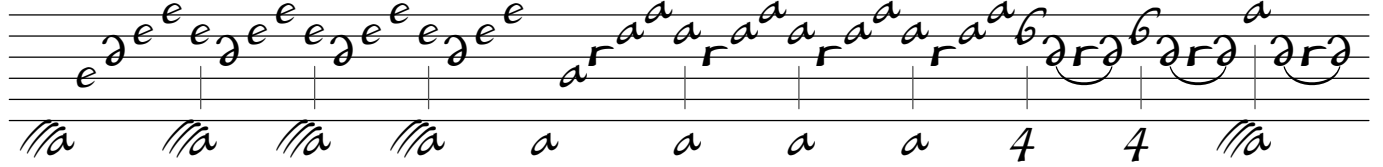
10



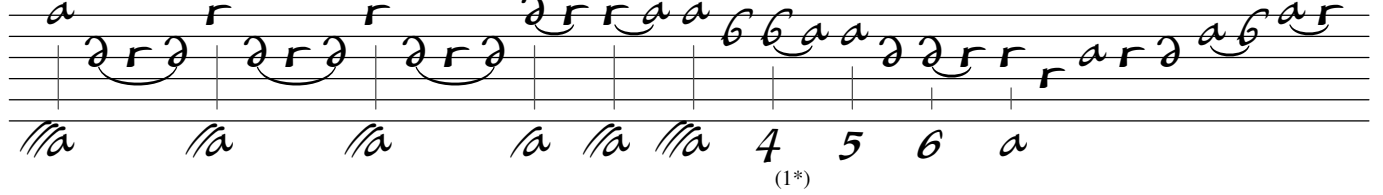
11



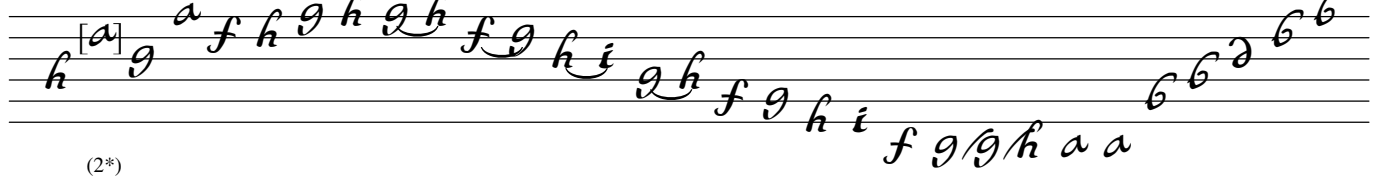
12



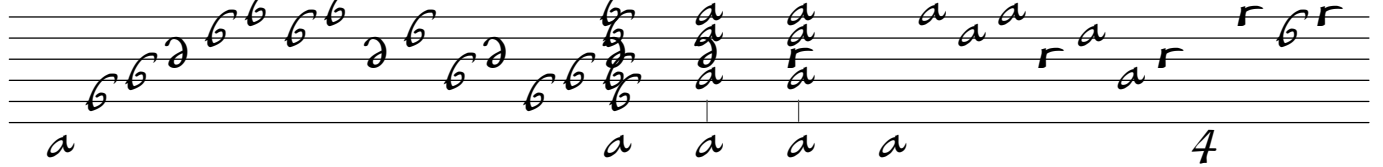
13



14



15



16



1. Original : liaison absente  
2. Original : La (a sur le 3e chœur)

# Allemande

Handwritten musical score for Allemande in C major, 3/4 time. The score consists of 12 staves of music with various annotations and performance instructions. The notation includes notes, rests, and dynamic markings like 'p' and 'm'. The rhythm is indicated by numbers 4 and 'a' below the staves. There are several asterisks in parentheses (1\* through 7\*) marking specific measures. The piece ends with a double bar line and repeat signs.

1. Original : présence d'une basse Mi bémol (8e chœur)
2. Original : liaison absente
3. Original : Do (d sur le 3e chœur)
4. Original : basse absente
5. Original : pas d'indication rythmique dans la mesure
6. Original : liaison absente
7. Original : indication rythmique de triolet

(6\*) (7\*)

14

a 4 a 4 4 a alla alla alla

16

4 alla 4 a a a alla a (1\*)

18

alla a b (2\*) a b a (3\*)

20

4 a 4 a 4 a alla alla (4\*)

22

alla alla 4 alla 4 r r a r a r a r a r a r a r (5\*)

24

a b a 4 4

1. Liaison absente de la tablature originale.
2. Original : liaison absente
3. Original : pas d'indication rythmique
4. Original : la basse est sous la note précédente
5. Original : pas d'indication rythmique

# Tonalité : Do mineur

*Accord des basses du luth : 3 bémols*

*Scordature par octave*

Musical notation for lute scordature. It consists of two staves. The upper staff is a six-line staff with a brace on the left. The lower staff is a five-line staff with a treble clef and two flats (Bb, Eb). The notation shows fingerings for the strings: the top string has a '2' above it; the second string has a '6' above it; the third string has a '6' above it; the fourth string has a '5' below it; the fifth string has a '6' below it; and the sixth string has a '6' below it. There are also some handwritten-style markings like 'a' and '6' between the strings.

*Accord des 13 chœurs du luth*

Musical notation for 13 lute choirs. It consists of two staves. The upper staff is a six-line staff with a brace on the left. The lower staff is a five-line staff with a treble clef and two flats (Bb, Eb). The notation shows fingerings for the strings: the top string has an 'a' above it; the second string has an 'a' above it; the third string has an 'a' above it; the fourth string has an 'a' above it; the fifth string has an 'a' above it; the sixth string has an 'a' above it; the seventh string has an 'a' above it; the eighth string has an 'a' above it; the ninth string has an 'a' above it; the tenth string has an 'a' above it; the eleventh string has an 'a' above it; the twelfth string has an 'a' above it; and the thirteenth string has an 'a' above it. There are also some handwritten-style markings like 'a', '6', and '4 5 6' between the strings.