

[Compositeur anonyme]

Paysanne (Paisan)

Ré majeur

Manuscrit de Grüssau PL-Wu2003

Bibliothèque universitaire de Varsovie

PL-Wu ms. RM 4136 (olim Ms. Mf. 2003)

Folio 37r



Paysanne (Paisan)

♩ ♪ ♩ ♪ ♪
♩ ♪ ♩ ♪

2 *a r a e r e* | *a a a a* | *a r a r a r*

4 *e a a r e r* | *e r e e* | *r e r e* | *e r a e a*

8 *r e e* | *r e r e e* | *r a r e e* | *r e r e e*

12 *r a r e a* | *e r e* | *r a r a* | *r e*

16 *a a* | *a r a e r e* | *a r a r r* | *f e f*

20 *a e r e e* | *e r e* | *e a e* | *e r e r*

24 *e a e* | *e r a e f r* | *a*

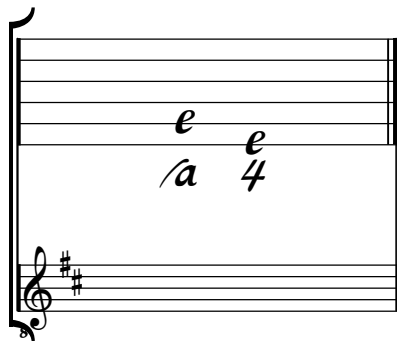
(1*) (2*) (3*) (4*) (5*) (6*)

1. Original : liaison absente
2. id.
3. id.
4. Original : basse Mi (a sur le 9e chœur) et liaison absente
5. Original : liaison absente
6. id.

Tonalité : Ré majeur

Accord des basses du luth : 2 dièses

Scordature par octave



Accord des 11 chœurs du luth

Musical notation for 'Accord des 11 chœurs du luth'. It shows a lute fretboard with six strings. The notes are: 1st string (A), 2nd string (A), 3rd string (A), 4th string (A), 5th string (A), and 6th string (A). The notes are written as 'a' on the strings. A '4' is written below the 6th string. Below the fretboard is a treble clef with two sharps (F# and C#) and a bass clef with two sharps (F# and C#).

