

Charles Mouton
(vers 1626 - vers 1699)

[7 pièces]

Prélude de Mouton, Alemande de Mouton
Départ de feu Madame. Courante de Mouton, Double,
Sarabande de Mouton, Le Mouton Canaris de Mouton,
Le Toxin de Mouton Gigue, Gavote de Mouton

CLFMou, N°109, 37, 32, 32bis, 34, 39, 31, 35

Fa dièse mineur
accord du Ton de la Chèvre

Manuscrit Milleran F-Pn82

Paris, Bibliothèque Nationale
F-Pn ms. Rés. 82
Folios 41r. à 47v.

Voir dans le manuscrit de Berlin D-Bsa4060, p. 705 à 710 - f. 303v à 306r,
- Le Dialogue des Graces sur Iris par Monsieur Mouton
- Canarie de Mons: Mouton
- Double sur le Depart de Mons: Mouton
(DBsa4060_324)

Alemande de Mouton

Handwritten musical score for "Alemande de Mouton" by Charles Mouton. The score is written on a grand staff with treble and bass clefs. It features a variety of rhythmic values (quarter, eighth, sixteenth notes), rests, and dynamic markings such as *f* (forte) and *a* (accendo). Fingerings are indicated by numbers 1-3. The piece is divided into measures, with measure numbers 1, 3, 5, 7, 10, and 12 clearly marked. The notation includes many slurs, ties, and accents, indicating complex phrasing and articulation. The piece concludes with a double bar line and a repeat sign.

Départ de feu Madame. Courante de Mouton

The image shows a musical score for a piece titled "Départ de feu Madame. Courante de Mouton". The score is written on a grand staff with two staves per system. The music is in a 3/4 time signature and features a variety of rhythmic patterns, including eighth and sixteenth notes, and rests. The notation includes fingerings (1-3), slurs, and dynamic markings such as *ff* and *ff*. The score is divided into measures, with measure numbers 6, 11, 16, 21, 26, and 30 indicated on the left. The final measure (30) ends with a decorative flourish.

6

11

16

21

26

30

Double

Musical score for "Double" by Charles Mouton, page 4. The score is written on a grand staff with a treble clef and a key signature of one flat (B-flat). It consists of 30 measures, divided into systems of four measures each. The notation includes various rhythmic values (quarter, eighth, sixteenth notes), rests, and dynamic markings such as *a*, *f*, and *ff*. There are also some unusual markings like *k*, *h*, and *i*. The score ends with a double bar line and a decorative flourish.

1. Original : indication rythmique de blanche

Le Toxin de Mouton - Gigue

Handwritten musical score for "Le Toxin de Mouton - Gigue" by Charles Mouton. The score is written on a grand staff with two staves per system. It features complex rhythmic patterns, including triplets and sixteenth notes, and includes various musical notations such as slurs, ties, and dynamic markings. The piece is in 4/4 time and ends with a decorative flourish.

Measures 1-3: *a*

Measures 4-6: *a*

Measures 7-9: *a*

Measures 10-12: *a*

Measures 13-15: *a*

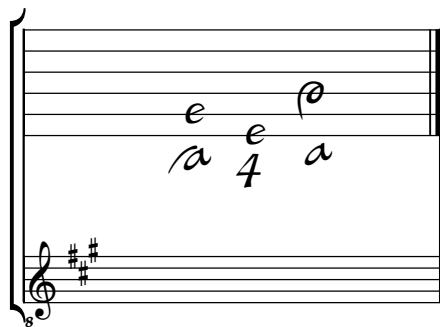
Gavote de Mouton

The musical score for "Gavote de Mouton" is presented in four systems, each with a treble clef and a key signature of one flat (B-flat). The notation includes notes, rests, and various fingerings indicated by numbers 1, 2, 3, and 4. Some notes are marked with a 'p' for piano. The first system (measures 1-4) features a melodic line starting on G4 and a bass line starting on G3. The second system (measures 5-8) includes a repeat sign and a '4' below the first measure. The third system (measures 9-12) contains a '4' below the first measure and a '3' below the second measure. The fourth system (measures 13-14) ends with a decorative flourish. The piece concludes with a final measure on G4.

Tonalité : Fa dièse mineur

Accord des basses du luth : Fa, Do et Sol dièse

Scordature par octave



Accord des 11 chœurs du luth

