

*Ennemonde Gaultier*

*(1575 ? - 1651)*

# [Trois pièces]

Le Loup du v. Gaultier Canaris  
La Conquerante du v. Gaultier Courante  
Double

CLFVGa, N°53, 37

Ré majeur et Mi mineur  
*accord enrhumé*

**Manuscrit Milleran F-Pn82**

*Paris, Bibliothèque Nationale*

F-Pn ms. Rés. 82

*Folios 32v. et 33r. à 37r.*





## Le Loup du v. Gautier - Canaris

The image shows a musical score for a piece titled "Le Loup du v. Gautier - Canaris". The score is written on a grand staff (treble and bass clefs) and consists of 48 measures, divided into eight systems of six measures each. The notation includes various rhythmic values (quarter, eighth, and sixteenth notes), rests, and dynamic markings such as *f* (forte) and *a* (accents). There are also some handwritten annotations, including a circled *a* and a circled *a* with a star above it. The score ends with a double bar line and a decorative flourish.

1. Original : indication rythmique de croche

## La Conquerante du v. Gautier - Courante

(1\*)

6

11

16

21

25

30

4

1. Original : dans ces deux pièces, les signes rythmiques sont souvent approximatifs et plus indicatifs que précis.

# Double

Musical score for 'Double', consisting of five systems of music. Each system includes a rhythmic notation line above a two-staff musical notation. The score is marked with various performance instructions and dynamics.

System 1 (Measures 1-5): Rhythmic notation: ♩ ♩. ♩♩♩ ♩ ♩. ♩ ♩ ♩♩♩ ♩ ♩. Musical notation: *ff* *ff* *ff* *ff* *ff*. Handwritten annotations: *ff*, *ff*, *ff*, *ff*, *ff*.

System 2 (Measures 6-10): Rhythmic notation: ♩ ♩. ♩♩♩ ♩. ♩ ♩ ♩♩ ♩. ♩ ♩. ♩ ♩. Musical notation: *ff* *ff* *ff* *ff* *ff*. Handwritten annotations: *ff*, *ff*, *ff*, *ff*, *ff*.

System 3 (Measures 11-14): Rhythmic notation: ♩ ♩. ♩♩♩ ♩ ♩. ♩ ♩ ♩ ♩. ♩ ♩. Musical notation: *ff* *ff* *ff* *ff* *ff*. Handwritten annotations: *ff*, *ff*, *ff*, *ff*.

System 4 (Measures 15-19): Rhythmic notation: ♩ ♩. ♩ ♩. ♩ ♩. ♩ ♩. ♩ ♩. Musical notation: *ff* *ff* *ff* *ff* *ff*. Handwritten annotations: *ff*, *ff*, *ff*, *ff*, *ff*.

System 5 (Measures 20-28): Rhythmic notation: ♩. ♩ ♩. ♩♩♩ ♩ ♩. ♩ ♩. ♩ ♩. ♩ ♩. Musical notation: *ff* *ff* *ff* *ff* *ff*. Handwritten annotations: *ff*, *ff*, *ff*, *ff*, *ff*.

System 6 (Measures 29-33): Rhythmic notation: ♩ ♩. ♩♩♩ ♩ ♩. ♩ ♩. ♩ ♩. Musical notation: *ff* *ff* *ff* *ff* *ff*. Handwritten annotations: *ff*, *ff*, *ff*, *ff*.

System 7 (Measures 34-35): Rhythmic notation: ♩ ♩. Musical notation: *ff* *ff*. Handwritten annotations: *ff*, *ff*.

2 H Double Cadance

Musical notation for the 2 H Double Cadance, consisting of two measures on a two-staff system.

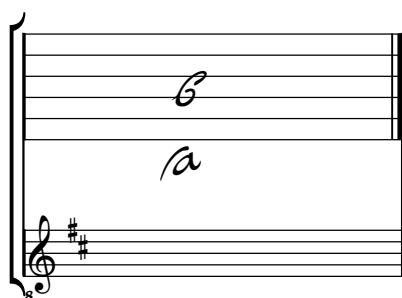
4

1. Original : indication rythmique de noire et croche sur la basse suivante
2. Original : indication rythmique de noire
3. Original : quatre mesures sans aucune indication rythmique
4. Original : indication rythmique de croche

# Tonalités : Ré majeur et Mi mineur

*Accord des basses du luth : 1 dièse*

*Scordature par octave*



*Accord des 10 chœurs du luth*

