

Charles Mouton
(vers 1626 - vers 1699)

Prelude de Mouton

CLFMou, N° 105

Ré mineur

Manuscrit Milleran F-Pn82

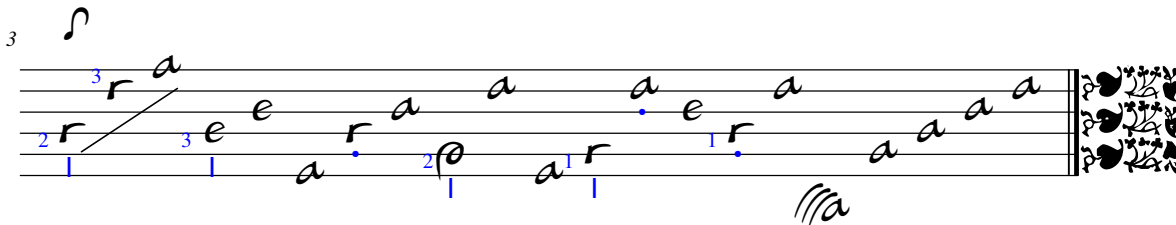
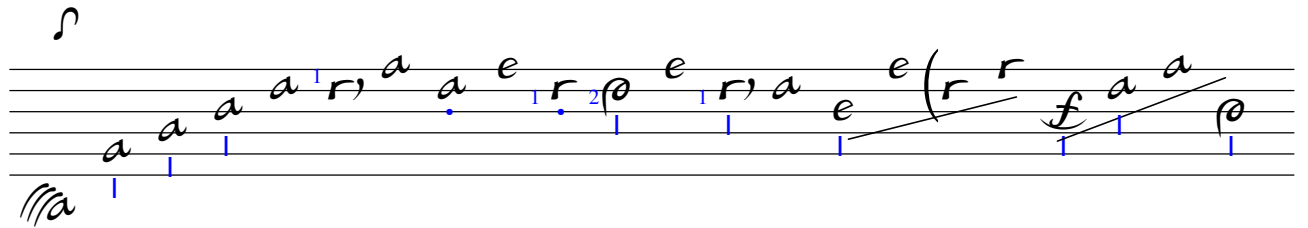
Paris, Bibliothèque Nationale

F-Pn ms. Rés. 82

Folio 20r.



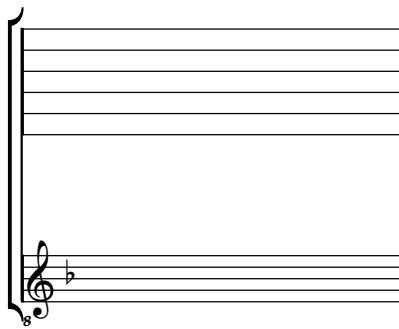
Prelude de Mouton



Tonalité : Ré mineur

accord ordinaire du luth

Scordature par octave



Accord des 11 chœurs du luth

Musical notation for the 11-voice lute chord. The top staff shows the fretting for each string, with the letter 'a' written above the notes. The bottom staff shows the bass line with a treble clef and a flat sign (b) on the first line. The notes in the bass line are: G2, F2, E2, D2, C2, B1, A1, G1, F1, E1, D1.

