

Laurent Dupré
(1642 - 1709)

[4 pièces]

Tombeau de Dufaux, Allemande de Dupré d'Angleterre
Courante de Dupré d'Angleterre
Sarabande de Dupré d'Angleterre
Gavote de Dupré d'Angleterre

Do mineur

Accord ordinaire avec le 9^e chœur abaissé

Manuscrit Milleran F-Pn82

Paris, Bibliothèque Nationale

F-Pn ms. Rés. 82

Folios 15v. à 18r.



Tombeau de Dufaux, Allemande de Dupré D'Angleterre

Handwritten musical score for 'Tombeau de Dufaux, Allemande de Dupré D'Angleterre'. The score is written on a grand staff with a treble clef and a key signature of one flat (B-flat). It consists of 16 measures, divided into four systems of four measures each. The notation includes rhythmic values (quarter, eighth, and sixteenth notes), rests, and various ornaments (trills, mordents, grace notes). Blue vertical lines are drawn under the notes in each measure. Measure numbers 1, 4, 7, 9, 12, and 15 are indicated on the left. A double bar line with repeat dots is at the end of measure 16. A small signature 'L. Dupré' is visible at the bottom right of the final system.

1. Original : barre de mesure absente

Courante de Dupré D'Angleterre

Musical notation system 1 (measures 1-5):

Musical notation system 2 (measures 6-11):

Musical notation system 3 (measures 12-17):

Musical notation system 4 (measures 18-23):

Musical notation system 5 (measures 24-29):

Sarabande de Dupré d'Angleterre

The image displays a handwritten musical score for a Sarabande by Laurent Dupré. The score is written on a grand staff (treble and bass clefs) and includes fingerings and ornaments. The music is in 4/4 time and the key signature is one flat (B-flat).

The score is divided into three systems:

- System 1 (Measures 4-6):** Measure 4 starts with a 4-measure rest. The melody begins in measure 5 with a quarter note G4, followed by quarter notes A4 and Bb4. Measure 6 continues with a quarter note C5, a quarter note Bb4, and a quarter note A4.
- System 2 (Measures 7-11):** Measure 7 starts with a 7-measure rest. The melody begins in measure 8 with a quarter note G4, followed by quarter notes A4 and Bb4. Measure 9 continues with a quarter note C5, a quarter note Bb4, and a quarter note A4. Measure 10 features a repeat sign and a first ending with a quarter note G4, a quarter note A4, a quarter note Bb4, and a quarter note C5. Measure 11 continues with a quarter note Bb4, a quarter note A4, and a quarter note G4.
- System 3 (Measures 12-16):** Measure 12 starts with a 12-measure rest. The melody begins in measure 13 with a quarter note G4, followed by quarter notes A4 and Bb4. Measure 14 continues with a quarter note C5, a quarter note Bb4, and a quarter note A4. Measure 15 features a repeat sign and a first ending with a quarter note G4, a quarter note A4, a quarter note Bb4, and a quarter note C5. Measure 16 continues with a quarter note Bb4, a quarter note A4, and a quarter note G4. The piece concludes with a double bar line and a repeat sign.

Gavote de Dupré d'Angleterre

Musical notation system 1 (measures 1-4):

4

Musical notation system 2 (measures 5-8):

4

Musical notation system 3 (measures 9-12):

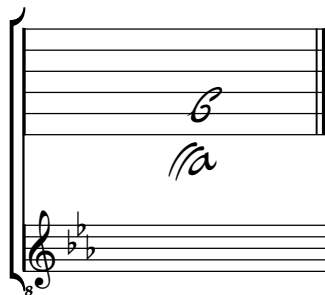
8

4

Tonalité : Do mineur

Accord des basses du luth : Mi bémol

Scordature par octave



Il faut accorder la 9 sur le b de la 5.

Accord des 11 chœurs du luth

