

[Compositeur anonyme]

Menuet (Menue)

Fa majeur

Manuscrit de Paris F-PnThII

Paris, Bibliothèque Nationale

F-Pn Rés. Vmc ms. 61 (olim: Bibl. Mad. Thibault)

Folio 3v



Menuet (Menue)

Musical notation for the first system of the Minuet (Menuet) in F major. It consists of two staves. The upper staff shows the melody with notes and rests. The lower staff shows the bass line with notes and rests. A 3/4 time signature is indicated at the beginning. The piece starts with a treble clef and a key signature of one flat (F major). The first measure has a 3/4 time signature and notes 'a a r'. The second measure has notes 'a b e'. The third measure has notes 'a e b'. The fourth measure has notes 'a b a, r a, r'. Below the staves, there are handwritten annotations: 'a' under the first measure, '4' under the second, 'Ma (*)' under the third, and 'Ma' under the fourth.

Musical notation for the second system of the Minuet. It consists of two staves. The upper staff shows the melody with notes and rests. The lower staff shows the bass line with notes and rests. The piece continues with notes 'a a r' in the first measure, 'a a b e' in the second, 'a e b' in the third, and 'a, e, a' in the fourth. A repeat sign is present at the end of the system. Below the staves, there are handwritten annotations: '4' under the first measure, 'Ma' under the second, 'Ma' under the third, and 'Ma Ma' under the fourth.

Musical notation for the third system of the Minuet. It consists of two staves. The upper staff shows the melody with notes and rests. The lower staff shows the bass line with notes and rests. The piece continues with notes 'a a r e' in the first measure, 'r a e r e a' in the second, 'a e a e' in the third, 'e e r a' in the fourth, and 'e a e b a' in the fifth. Below the staves, there are handwritten annotations: 'Ma' under the first measure, 'Ma Ma' under the second, 'a 4 Ma' under the third, and 'Ma' under the fifth.

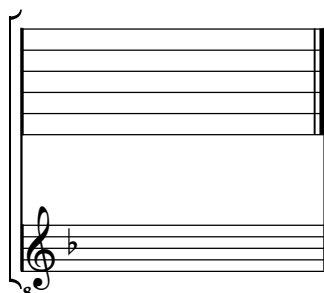
Musical notation for the fourth system of the Minuet. It consists of two staves. The upper staff shows the melody with notes and rests. The lower staff shows the bass line with notes and rests. The piece continues with notes 'e a a, r a' in the first measure and 'a e' in the second. The system ends with a decorative flourish. Below the staves, there is a handwritten annotation '4' under the first measure and 'a' under the second.

1. Original : indication rythmique de noire pointée avant croche

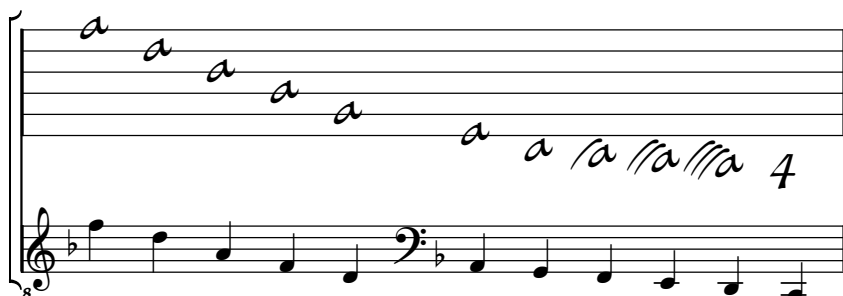
Tonalité : Fa majeur

Accord ordinaire des basses du luth

Scordature par octave



Accord des 11 chœurs du luth



A musical staff diagram for a lute. The top part shows a five-line staff with a double bar line at the end. The bottom part shows a six-line staff with a treble clef, a flat sign (Bb), and an octave sign (8) below it. The top staff contains a series of notes labeled 'a' (A) on various lines. The bottom staff contains a series of notes, including a bass clef and a double bar line at the end. This represents the 11-voice chord.

