

*[Compositeur anonyme]*

# Sarabande

Fa majeur

Manuscrit de Paris F-PnThII

*Paris, Bibliothèque Nationale*

F-Pn Rés. Vmc ms. 61 (olim: Bibl. Mad. Thibault)

*Folio 43v*



# Sarabande

1 2 3 4 5 6 7 8

3 *f* a a a a a a a a a a a a

3 4 5 6 7 8 9 10 11 12

a a a a a a a a a a a a a a a a

6 7 8 9 10 11 12 13 14 15

a a a a a a a a a a a a a a a a

8 9 10 11 12 13 14 15 16 17

a a a a a a a a a a a a a a a a

11 12 13 14 15 16 17 18 19 20

a a a a a a a a a a a a a a a a

13

*f* *h* *f* *h* *h* *f* *h* *h* *r* *a* *r*

*r* *r* *r* *r* *r* *r* *a* *r*

*a* *a* *a* *a* 4 *b* *a* *r*

15

*r* *a* *a*

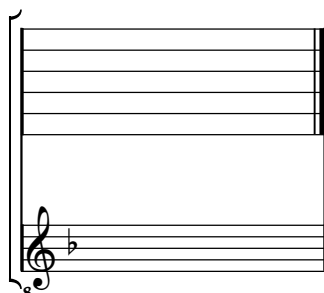
*a* *a* *a* *a*

*r* *a* *a*

# Tonalité : Fa majeur

*Accord ordinaire des basses du luth*

## *Scordature par octave*



## *Accord des 11 chœurs du luth*

A musical staff with a treble clef and a flat sign (B-flat) indicating the key of F major. The staff is empty, with a small '8' written below the first line, indicating an octave shift. The staff is enclosed in a large bracket on the left side.